

ADDRESS

301-302,SHEKHER CENTRAL ,AB
ROAD,
Indore (M.P.) ,452001.

Email - support@capitalbuilder.in
info@capitalbuilder.in

19 FEB 2019

NIFTY Roundup

Bears dragged the Nifty below 10,600 during last hour trading but managed to close just above the 10,600 level.

At the end, Sensex was down 145.83 points at 35352.61, while Nifty was down 36.60 points at 10604.40. About 1360 shares have advanced, 1169 shares declined, and 122 shares are unchanged.

World Indices

INDEX	VALUE	% CHANGE
DJI	25883	+1.74%
S&P 500	2775	+1.09%
NASDAQ	7055	+0.47%
EURO STO	3214	+0.37%
FTSE	7179	+0.54%
NIKKEI	20751	-0.59%

TOP LOSERS

COMPANY	VALUE	CHANGE
TCS	1904.80	-3.32%
WIPRO	363.45	-3.23%
NTPC	133.70	-2.73%
INDUSLNDBK	1480.50	-2.41%
INFY	724.30	-2.26%

TOP GAINERS

COMPANY	VALUE	CHANGE
VEDL	153.10	3.45%
GRASIM	718.35	2.64%
BPCL	335.25	2.29%
JSWSTEEL	266.85	1.89%
ZEE ENTERTAIN	446.45	1.71%

STOCKS 52 WEEK HIGH

COMPANY	VALUE	CHANGE
BALRAMCHIN	127.40	4.26%
DHAMPURSUG	219.80	7.69%
RELIANCEETF	2980	-0.20%
SKFINDIA	1998.70	2.18%

STOCKS 52 WEEK LOW

COMPANY	VALUE	CHANGE
ABGSHIP	1.35	-3.57%

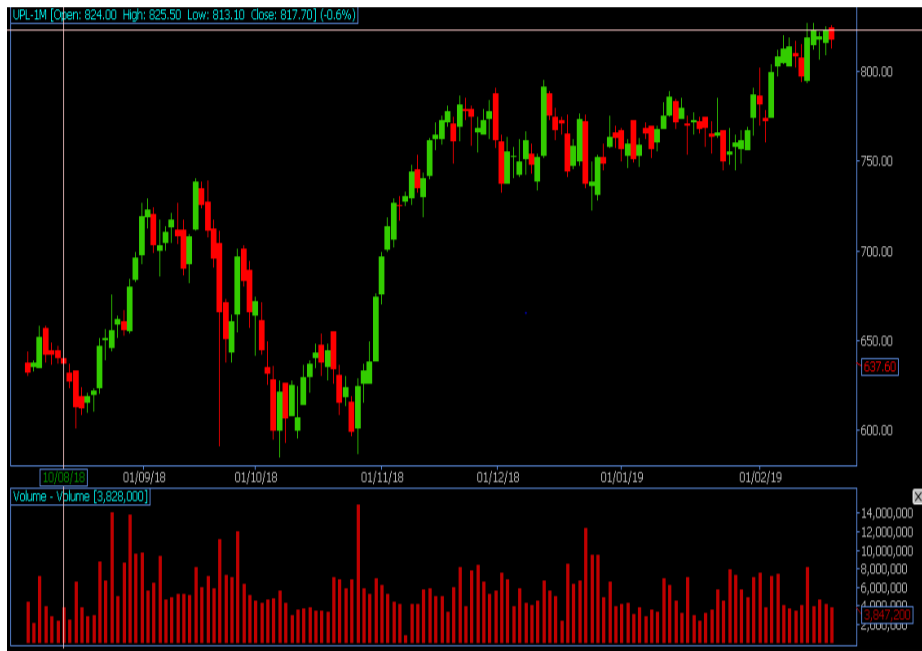
INDIAN INDICES

INDEX	CMP	CHANGE	%CHANGE
SENSEX	35352	-145.83	-0.41%
NIFTY	10604	-36.60	-0.34%

STOCK RECOMMENDATIONS [FUTURE]

1 UPL

UPL FUTURES is looking BULLISH on charts, we may see UPSIDE movement. We advise BUY ABOVE 826.60 with strict stop loss of 816 for the targets of 833-840 Levels.



2 PVR

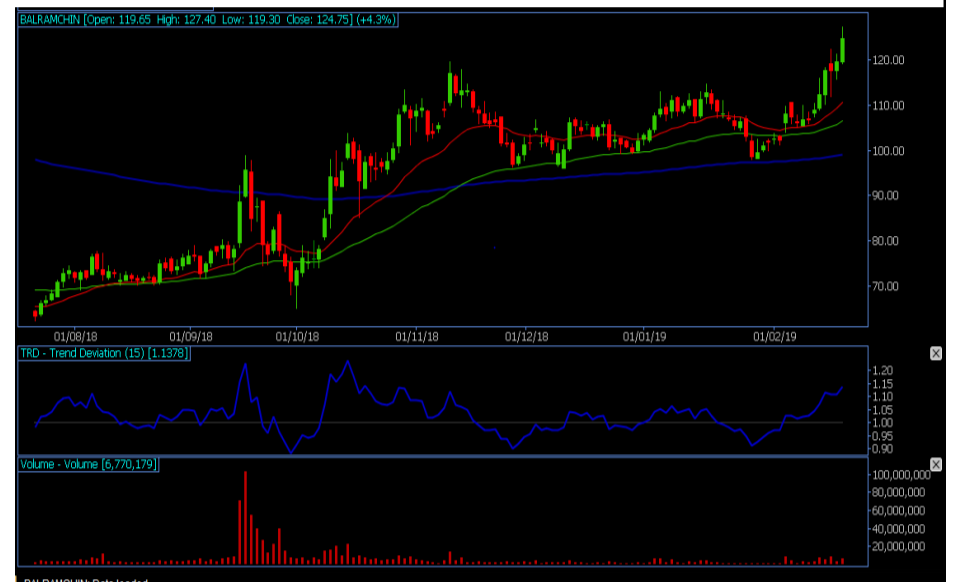


PVR FUTURES is looking STRONG on charts. We advise BUY ABOVE 1500 with strict stop loss of 1470 for the targets of 1515-1540 levels.

STOCK RECOMMENDATION [CASH]

1 BALRAMCHIN

BALRAMCHIN looking BULLISH on charts, we may see UPSIDE movement, We advise BUY above 125 with strict stop loss of 120 for the targets of 130-135 levels.



MACRO NEWS

MINDTREE - IT Dept withdraws provisional attachment order for the transfer or charge of 22,20,000 and 52,70,000 equity shares of MINDTREE by Coffee Day Enterprises and V G Siddhartha, held by them respectively

EMAMI Group promoters divest 10% stake for Rs 1600 CRORE in EMAMI

BREXIT UPDATE: SEVEN LABOUR MPs HAVE RESIGNED TO FORM THE INDEPENDENT GROUP: Following the decision of seven Labour MPs to walk out on Monday, colleagues expressed anger with the leadership during a "tense" meeting in Parliament. Corbyn-critic Ian Austin said others would "think hard" about leaving unless it fixed its anti-Semitism problem.

19 FEB 2019

NIFTY FUTURES



The immediate support for Nifty is seen at 10,585 and then 10,530. A break below 10,530 would lead to a breakdown from the range and we expect the market to move initially towards 10,330. On the upside, the index needs to cross 10,790 for a bounceback to be seen towards 10,930.

BANK NIFTY FUTURES



Technically, it has crucial support at 26,750 and a breakdown of the same will push the index towards 26,400 in the near future. On the higher side, 27,100-27,200 will be the resistance area.

INDICES	R1	R2	PIVOTS	S1	S2
NIFTY	10689	10774	10637	10551	10500
BANK NIFTY	26912	27139	26768	26541	26398

PERFORMANCE UPDATES

Date	Cash/ Futures/ option	Contract	Strategy	Entry Level	Target	Stop Loss	Remark
19-2-2019	BALRAMCHIN	CASH	LONG	123.80	124.45-	360	BOOKED PROF-IT
19-2-2019	SUNTV	FUTURE	LONG	559	562-575	551	BOOKED PROF-IT
19-2-2019	BRITANNIA	FUTURE	LONG	2973	2986-3030	2940	BOOKED PROF-IT
19-2-2019	BHATIARTL	FUTURE	LONG	313	314.50-321	309.40	BOOKED PROF-IT
19-2-2019	TCS1960PE	OPTION	LONG	39	50	28	BOOKED PROF-IT

DISCLAIMER

www.capitalbuilder.in does not take any compensation of any kind whatsoever from any company that they mention on this website. All data and reports at **www.capitalbuilder.in** are only information services for investors and are not individualized recommendations to buy or sell securities, nor offers to buy or sell securities. The publishers of reports, reviews and analysis under **www.capitalbuilder.in** are not acting in any way to influence the purchase or sale of securities. The information provided is obtained from sources deemed reliable but is not guaranteed as to accuracy or completeness or as to the results obtained by individuals using such information. It is possible at this or some subsequent date, the publishers of reports, reviews and analysis at **www.capitalbuilder.in** may own, buy or sell securities presented. Each user shall be responsible for the risks of their own investment activities and, in no event, shall **www.capitalbuilder.in**, its publishers, employees, owners or investors, be liable for any losses or damages, monetary or otherwise, that result from actions taken after reading the contents of reports, reviews and analysis published on **www.capitalbuilder.in**. The publishers recommend that anyone trading securities should do so with caution and consult with a broker and financial advisor before.

- Capital Builder Financial Services comply with SEBI INVESTMENT ADVISOR GUIDELINES 2013, So please co-operate in providing KYC & Risk Profiling to our employees.
- Dear clients, Capital Builder Financial Services does not claim/give any assured/ guaranteed return, don't trade on personal calls, trade only in Company Research calls. Please beware of fraud calls/sms & misguided advise rumors like JACKPOT, HOT TIPS, SURESHOT kind of messages.
- Capital Builder Financial Services do not ask any client or any person to deposit money in any Employee Or any person's personal bank account details, so never deposit money in any Employee personal account.