

## ADDRESS

301-302,SHEKHER CENTRAL ,AB  
ROAD,  
Indore (M.P.) ,452001.

**Email -** [support@capitalbuilder.in](mailto:support@capitalbuilder.in)  
[info@capitalbuilder.in](mailto:info@capitalbuilder.in)

27 FEB 2019

## NIFTY Roundup

Benchmark indices ended lower as they remained volatile throughout the day amid tension on LoC.

At close, the Sensex was down 68.28 points at 35905.43, while Nifty was down 28.60 points at 10806.70. About 1141 shares have advanced, 1359 shares declined, and 170 shares are unchanged.

Bajaj Auto, Sun Pharma, Bharti Airtel, L&T, TCS, UltraTech Cement and UPL were among top gainers on the indices, while losers were Tata Motors, Vedanta, Kotak Mahindra Bank, HUL, NTPC, Bharti Infratel, Wipro and Titan Company.

Among sectors, selling was seen in the IT, metal, FMCG and bank space, while buying seen in the auto, infra and pharma space.

## World Indices

INDEX	VALUE	% CHANGE
DJI	26057	-0.13%
S&P 500	2793.90	-0.08%
NASDAQ	7123	+0.11%
EURO STO	3277	-0.37%
FTSE	7096	-0.76%
NIKKEI	20751	-0.59%

## TOP LOSERS

COMPANY	VALUE	CHANGE
BHARTINFRATEL	296.75	-3.65%
WIPRO	374.40	-3.42%
VEDANTA	164.65	-2.98%
TATAMOTOR	177.35	-2.90%
TITAN COMPANY	1016.25	-2.13%

## TOP GAINERS

COMPANY	VALUE	CHANGE
BHARTIARTL	320.15	1.49%
UPL	869.30	1.67%
BAJAJAUTO	2914	1.94%
SUNPHARMA	442.70	1.59%
ULTRATECHCEMENT	3889.10	2.65%

## STOCKS 52 WEEK HIGH

COMPANY	VALUE	CHANGE
NAUKRI	1845	6.03%
CANTABIL	244.80	-0.91%
REFEX	31.80	4.95%
PFC	113.50	0.27%

## STOCKS 52 WEEK LOW

COMPANY	VALUE	CHANGE
CANDC	12.10	-4.72%

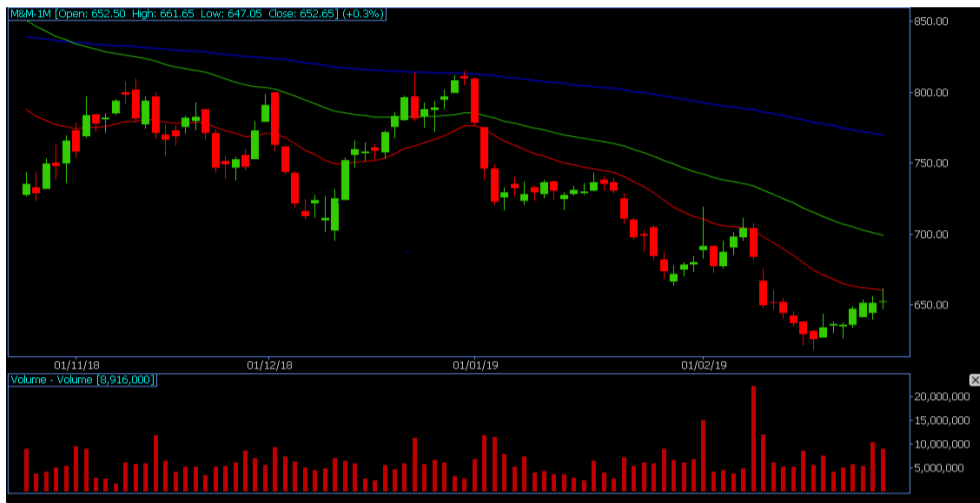
## INDIAN INDICES

INDEX	CMP	CHANGE	%CHANGE
SENSEX	35905	-38.28	-0.19%
NIFTY	10806.65	-28.65	-0.26%

### STOCK RECOMMENDATIONS [FUTURE]

#### 1 M&M

M&M FUTURES is looking BEARISH on charts, we may see DOWNSIDE movement. We advise SELL BELOW 647 with strict stop loss of 655 for the targets of 642-635 Levels.



### STOCK RECOMMENDATION [CASH]

#### 1 OBEROIRETY

OBEROIRLTY looking BULLISH on charts, we may see UPSIDE movement, We advise BUY above 500 with strict stop loss of 494 for the targets of 505-515 levels.



#### 2 TATALEXI



TATALEXI FUTURES is looking BEARISH on charts. We advise SELL BELOW 874 with strict stop loss of 885 for the targets of 869-855 levels.

### MACRO NEWS

**PSU Banks:** RBI removes Allahabad Bank, Corporation Bank and Dhanlaxmi Bank from Prompt Corrective Action framework.

**Tata Steel:** Board approves raising fund up to Rs 5,000 crore via NCDs.

**BSE Limited:** SP Kothari resigns as shareholder director to join Securities Exchange Commission, Washington.

## NIFTY FUTURES



Bulls remained vulnerable to the cross border news flows as Nifty50 witnessed a wild swing of around 190 points in both the directions before signing off the session with a bearish candle which resulted in a modest cut when compared to its previous day's close, Nifty index formed a bearish candle on daily scale as it has got stuck in a trading range and follow up action is missing on both the sides as dips are being bought while bounce is being sold in the market, Now it has to continue to hold above 10,750 zones to extend its move towards 10,888 then 10,929 zones while on the downside support exists at 10,720 then 10,650 levels,

## BANK NIFTY FUTURES



Bank Nifty remained highly volatile throughout the session as it traded in a wider range of 26,700 to 27,200 zones. It closed 153.65 points lower at 26,799.30 and formed a Bearish Engulfing Candle on daily scale as selling pressure is being witnessed at higher levels, The index got stuck in between 26,666 to 27,200 zones since last 11 trading sessions. Now it requires a decisive range breakout from the current trading band to commence the next leg of momentum.

INDICES	R1	R2	PIVOTS	S1	S2
NIFTY	10913	11021	10832	10725	10644
BANK NIFTY	27087	27373	26903	26617	26433

## PERFORMANCE UPDATES

Date	Cash/ Futures/ option	Contract	Strategy	Entry Level	Target	Stop Loss	Remark
27-2-2019	TCS	FUTURE	LONG	2049.50	2057-2080	2028	BOOKED PROF-IT
27-2-2019	BIOCON	FUTURE	LONG	627.80	631-635-642	620.40	SL HIT
27-2-2019	BBTC	CASH	LONG	1235	1241-1255	1224	SL HIT
27-2-2019	OBEROIRLTY	CASH	LONG	505	507.50-517	499	BOOKED PROF-IT
27-2-2019	MARUTI7000CE	OPTION	LONG	62	77-92	47	BOOKED PROF-IT

## DISCLAIMER

**www.capitalbuilder.in** does not take any compensation of any kind whatsoever from any company that they mention on this website. All data and reports at **www.capitalbuilder.in** are only information services for investors and are not individualized recommendations to buy or sell securities, nor offers to buy or sell securities. The publishers of reports, reviews and analysis under **www.capitalbuilder.in** are not acting in any way to influence the purchase or sale of securities. The information provided is obtained from sources deemed reliable but is not guaranteed as to accuracy or completeness or as to the results obtained by individuals using such information. It is possible at this or some subsequent date, the publishers of reports, reviews and analysis at **www.capitalbuilder.in** may own, buy or sell securities presented. Each user shall be responsible for the risks of their own investment activities and, in no event, shall **www.capitalbuilder.in**, its publishers, employees, owners or investors, be liable for any losses or damages, monetary or otherwise, that result from actions taken after reading the contents of reports, reviews and analysis published on **www.capitalbuilder.in**. The publishers recommend that anyone trading securities should do so with caution and consult with a broker and financial advisor before.

- Capital Builder Financial Services comply with SEBI INVESTMENT ADVISOR GUIDELINES 2013, So please co-operate in providing KYC & Risk Profiling to our employees.
- Dear clients, Capital Builder Financial Services does not claim/give any assured/ guaranteed return, don't trade on personal calls, trade only in Company Research calls. Please beware of fraud calls/sms & misguided advise rumors like JACKPOT, HOT TIPS, SURESHOT kind of messages.
- Capital Builder Financial Services do not ask any client or any person to deposit money in any Employee Or any person's personal bank account details, so never deposit money in any Employee personal account.