

11 JUNE 2019



## Capital Builder

We Build Your Capital

- Stock Commodities Advisory • Real Estate
- Equity / Commodity / Currency Broking
- Auto Loans / LAP • Mutual Funds

### ADDRESS

301-302,SHEKHER CENTRAL ,AB  
ROAD,  
Indore (M.P.) ,452001.

**Email -** [support@capitalbuilder.in](mailto:support@capitalbuilder.in)  
[info@capitalbuilder.in](mailto:info@capitalbuilder.in)

11 JUNE 2019

## NIFTY Roundup

Indian indices ended on positive note but off day's high on June 11 with Nifty able to close above 11,950 level.

At close, the Sensex was up 165.94 points at 39,950.46, while Nifty was up 42.90 points at 11,965.60. About 1141 shares have advanced, 1393 shares declined, and 153 shares are unchanged.

Yes Bank, ONGC, Tata Motors, Zee Entertainment and IndusInd Bank were among major gainers on the Nifty, while losers were Indiabulls Housing, Sun Pharma, M&M, Dr Reddy's Labs and Tech Mahindra.

Among the sectors, buying was seen in the auto, bank, energy, metal, IT and infra, while FMCG ended marginally lower.

## World Indices

INDEX	VALUE	% CHANGE
DJI	26189	+0.39%
S&P 500	2886	+0.47%
NASDAQ	7742	+1.66%
EURO STO	3411	+0.74%
FTSE	7402	+0.37%
NIKKEI	21204	+0.33%

## TOP GAINERS

COMPANY	VALUE	CHANGE
YESBANK	139.75	+2.83%
TATAMOTOR	171	+2.83%
INDUSINDBK	1594	+2.73%
ZEEL	344.40	+2.70%
JSWSTEEL	273.90	+2.64%

## TOP LOSERS

COMPANY	VALUE	CHANGE
SUNPHRAMA	674	-8.07%
IBULHSGFIN	136.50	-2.62%
M&M	636.50	-1.62%
BPCL	386	-0.94%
TECHM	762	-0.81%

## STOCKS 52 WEEK HIGH

COMPANY	VALUE	CHANGE
AGROPHOS	82	+2.50%
ATUL	4146	+1.16%
NESCO	579.85	+5.66%
REFEX	78.45	-4.95%

## STOCKS 52 WEEK LOW

COMPANY	VALUE	CHANGE
ABAN	43.20	-4.08%

## INDIAN INDICES

INDEX	CMP	CHANGE	%CHANGE
SENSEX	39950	+166	+0.42%
NIFTY	11965	+42	+0.36%

### STOCK RECOMMENDATIONS [FUTURE]

#### 1 ZEEL

ZEEL FUTURES is looking BEARISH on charts, we may see DOWNSIDE movement. We advise SELL BELOW 346 with strict stop loss of for 351 the targets of 343-338 Levels.



#### 2 RELIANCE

RELIANCE FUTURES is looking BULLISH on charts. We advise BUY ABOVE 1340 with strict stop loss of 1325 for the targets of 1350-1360.



### STOCK RECOMMENDATION [CASH]

#### 1 GODREJPROP

GODREJPROP looking on BULLISH charts, we may see UPSIDE movement, We advise BUY above 900 with strict stop loss of 880 for the targets of 910-920.



### MACRO NEWS

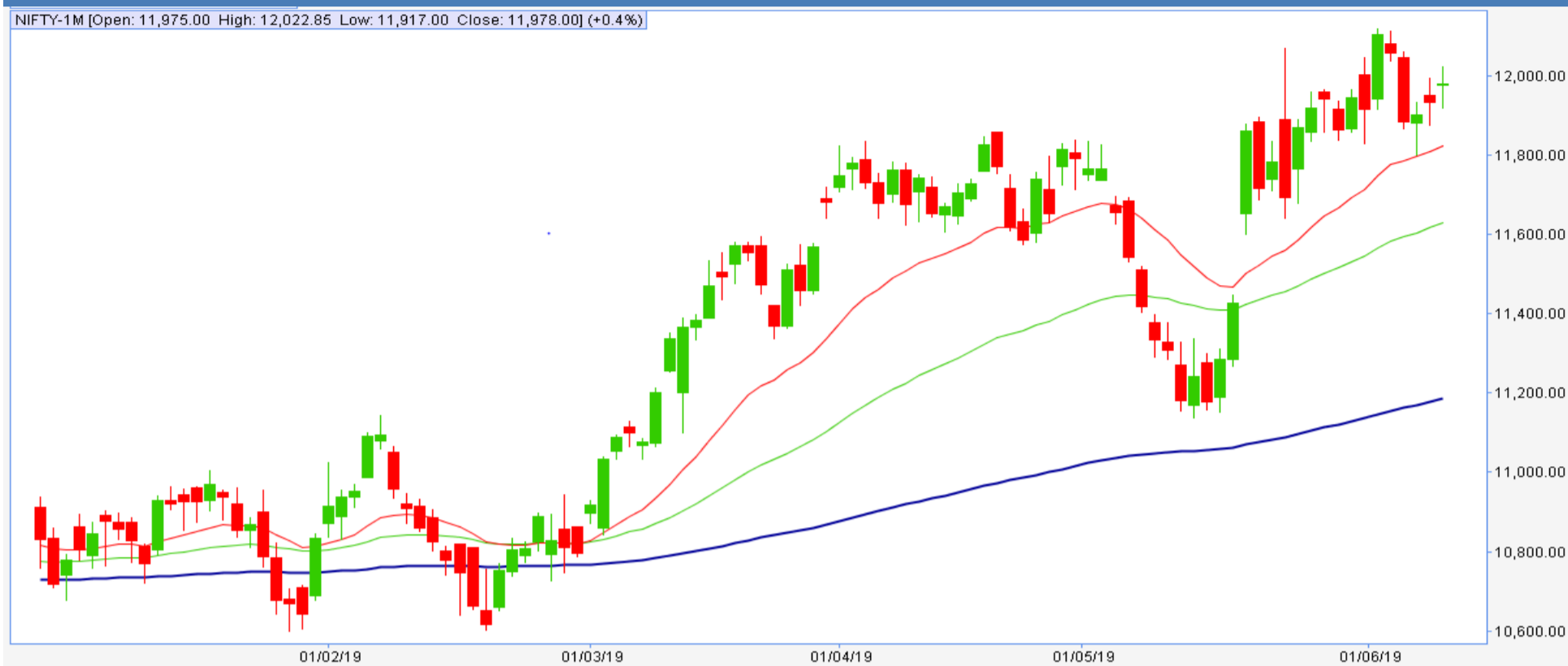
Rating agency Moody's Investors Service has placed YESBANK foreign currency issuer rating of Ba1 under review for a potential downgrade. It has also placed the bank's long-term foreign and local currency bank deposit ratings of Ba1, foreign currency senior unsecured MTN programme rating of (P)Ba1, among other instruments under review.

The newly-elected government is unlikely to cut the tax rate for large companies and might raise the long-term capital gains (LTCGs) tax, Mint REPORT

Gold fell 1 percent on June 10, retreating from a 14-month peak hit in the previous session after a deal between the United States and Mexico to avert a tariff war prompted investors to ditch the safe-haven metal for riskier assets.

11 JUNE 2019

## NIFTY FUTURES



"Nifty has been forming Dojis from the last three trading sessions but at the same time forming higher highs, higher lows that suggest that decline is being bought while resistances are intact at the upper band of the trading range, added that it has to continue to hold above 11,888 to witness an up move towards 12,041, then 12,100; while on the downside, support is seen at 11,888, then 11,761.

## BANK NIFTY FUTURES



Bank Nifty closed 231.45 points higher at 31265.45 and formed a small Inside Bar on the daily scale And last three days same time forming higher highs, higher lows that 30400 by respecting its hurdle near to previous swing high of 30783.60.

INDICES	R1	R2	PIVOTS	S1	S2
NIFTY	12009	12052	11956.73	11913	11860
BANK NIFTY	31452	31638	31212	31026	30786

## PERFORMANCE UPDATES

Date	Cash/ Futures/ option	Contract	Strategy	Entry Level	Target	Stop Loss	Remark
11-6-2019	TCS	FUTURE	LONG	2258	2268- 2290	2238	BOOKED PROF- IT
11-6-2019	WIPRO	FUTURE	LONG	296	297.50- 299	293	BOOKED PROF- IT
11-6-2019	NTPC	CASH	LONG	135.80	136.50- 137.30	134.30	BOOKED PROF- IT
11-6-2019	STRTECH	CASH	LONG	191.70	192.60- 194	189.30	BOOKED PROF- IT
11-6-2019	TCS2240CE	OPTION	LONG	32	35-43	23	BOOKED PROF- IT

## DISCLAIMER

**www.capitalbuilder.in** does not take any compensation of any kind whatsoever from any company that they mention on this website. All data and reports at **www.capitalbuilder.in** are only information services for investors and are not individualized recommendations to buy or sell securities, nor offers to buy or sell securities. The publishers of reports, reviews and analysis under **www.capitalbuilder.in** are not acting in any way to influence the purchase or sale of securities. The information provided is obtained from sources deemed reliable but is not guaranteed as to accuracy or completeness or as to the results obtained by individuals using such information. It is possible at this or some subsequent date, the publishers of reports, reviews and analysis at **www.capitalbuilder.in** may own, buy or sell securities presented. Each user shall be responsible for the risks of their own investment activities and, in no event, shall **www.capitalbuilder.in**, its publishers, employees, owners or investors, be liable for any losses or damages, monetary or otherwise, that result from actions taken after reading the contents of reports, reviews and analysis published on **www.capitalbuilder.in**. The publishers recommend that anyone trading securities should do so with caution and consult with a broker and financial advisor before.

- Capital Builder Financial Services comply with SEBI INVESTMENT ADVISOR GUIDELINES 2013, So please co-operate in providing KYC & Risk Profiling to our employees.
- Dear clients, Capital Builder Financial Services does not claim/give any assured/ guaranteed return, don't trade on personal calls, trade only in Company Research calls. Please beware of fraud calls/sms & misguided advise rumors like JACKPOT, HOT TIPS, SURESHOT kind of messages.
- Capital Builder Financial Services do not ask any client or any person to deposit money in any Employee Or any person's personal bank account details, so never deposit money in any Employee personal account.