

20 MAY 2019



Capital Builder

We Build Your Capital

- Stock Commodities Advisory
- Real Estate
- Equity / Commodity / Currency Broking
- Auto Loans / LAP
- Mutual Funds

ADDRESS

301-302,SHEKHER CENTRAL ,AB
ROAD,
Indore (M.P.) ,452001.

Email - support@capitalbuilder.in
info@capitalbuilder.in

NIFTY Roundup

Exit polls have predicted a comfortable victory for the BJP-led NDA, which helped the benchmark indices end at a record closing high. Both the indices posted a biggest single session gain since 2009.

At close, the Sensex was up 1,421.90 points or 3.75% at 39352.67, while Nifty was up 421.10 points or 3.69% at 11828.30. About 2013 shares have advanced, 613 shares declined, and 155 shares are unchanged.

Indiabulls Housing, IndusInd Bank, Adani Ports, SBI and Tata Motors were among major gainers on the Nifty, while losers were Dr Reddy's Labs, Zee Entertainment, Bajaj Auto, Tech Mahindra and Infosys.

All the sectoral indices ended in green led by PSU banks, infra, auto, energy, FMCG, metal and pharma.

World Indices

INDEX	VALUE	% CHANGE
DJI	25663	-0.45%
S&P 500	2845	-0.58%
NASDAQ	7816	-1.04%
EURO STO	3372	-1.54%
FTSE	7276	-1.00%
NIKKEI	21100	-1.00%

TOP GAINERS

COMPANY	VALUE	CHANGE
ADANI PORT	407.45	+10.99%
SBIN	345	+8.32%
INDUSINDBK	1494	+8.77%
TATAMOTORS	189.50	+7.15%
IBULHSGFIN	800	+10.62%

TOP LOSERS

COMPANY	VALUE	CHANGE
DRREDDY	2594	-5.50%
ZEEL	361	-3.00%
BAJAJAUTO	3015	-0.82%
TECHM	232.90	-0.76%
INFY	721.30	-0.36%

STOCKS 52 WEEK HIGH

COMPANY	VALUE	CHANGE
ATUL	3870	0.43%
CGCL	194.50	2.98%
DCBBANK	231	3.95%
CHALET	355	1.27%

STOCKS 52 WEEK LOW

COMPANY	VALUE	CHANGE
3PLAND	9.60	4.98%

INDIAN INDICES

INDEX	CMP	CHANGE	%CHANGE
SENSEX	39352	+1422	+3.75%
NIFTY	11828	+421	+3.69%

STOCK RECOMMENDATIONS [FUTURE]

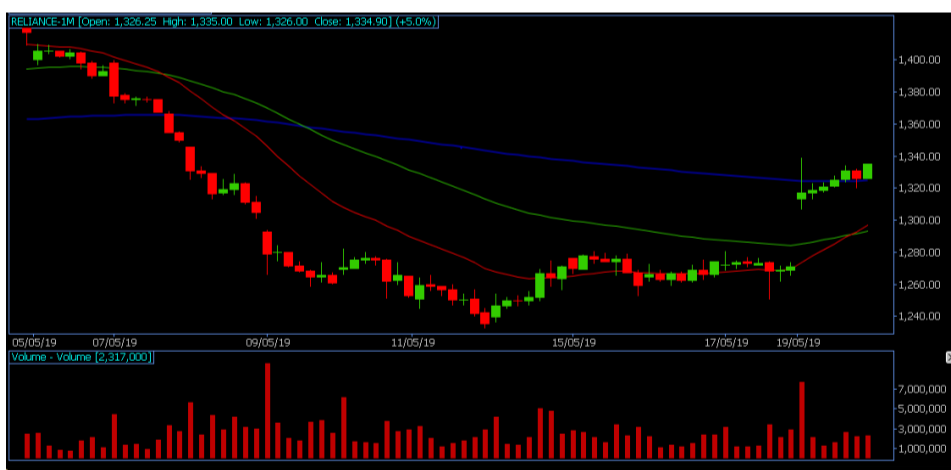
1 BPCL

BPCL FUTURES is looking BULLISH on charts, we may see UPSIDE movement. We advise BUY ABOVE 394 with strict stop loss of 389 the targets of 397-398 Levels.



2 RELIANCE

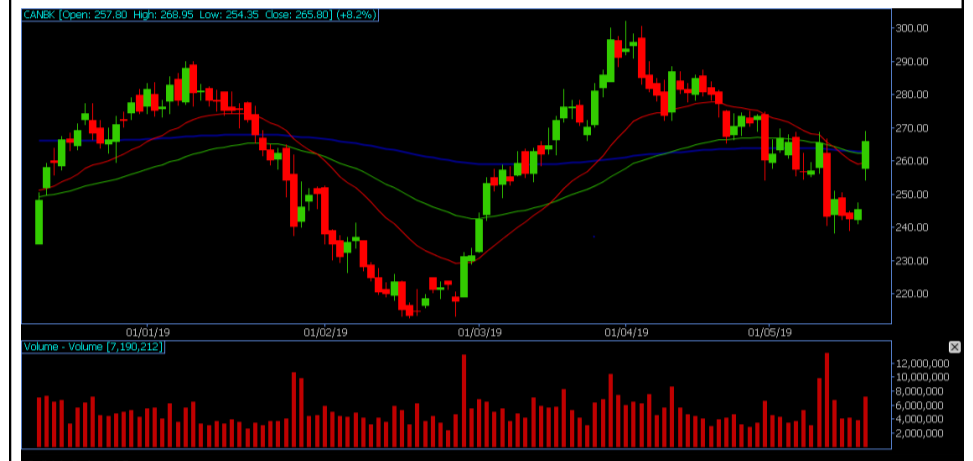
RELIANCE FUTURES is looking BULLISH on charts. We advise BUY ABOVE 1340 with strict stop loss of 1320 for the targets of 1355-1370.



STOCK RECOMMENDATION [CASH]

1 CANBK

CANBK looking BULLISH on charts, we may see UPSIDE movement, We advise BUY above 267 with strict stop loss of 262 for the targets of 270-275 levels.



MACRO NEWS

President Donald Trump said he was “very happy” with the trade war and that China wouldn’t become the world’s top superpower under his watch.

Top U.S. corporations from chipmakers to Google have frozen the supply of critical software and components to Huawei Technologies Co., complying with a Trump administration crackdown that threatens to choke off China’s largest technology company.

20 MAY 2019

NIFTY FUTURES



Usually after this kind of performance normalcy should return to the markets and hence next two sessions can witness muted response as bulls may try to consolidate their gains with a sideways range, Hence, the fortunate traders who happened to be on the long side of the trade can consider booking profits by making use of strong opening in the next session. If the strength on Nifty50 exceeds beyond 11,856 on closing basis then the rally should ideally get extended up to 12,100.

BANK NIFTY FUTURES



Nifty Bank hit a record high of 30,827 before closing the day at 30,759, up 1,309 points. Strong gains were seen in stocks like Bank of Baroda (up 9.4 percent), IndusInd Bank (up 8.8 percent), SBI (up 7.9 percent) and Yes Bank (7 percent). If the strength on NiftyBANK exceeds beyond 31000 on closing basis then the rally should ideally get extended up to 31500.

INDICES	R1	R2	PIVOTS	S1	S2
NIFTY	11918	12008	11755	11664	11501
BANK NIFTY	31021	31282	30566	30304	29849

PERFORMANCE UPDATES

Date	Cash/ Futures/ option	Contract	Strategy	Entry Level	Target	Stop Loss	Remark
20-5-2019	SBIN	FUTURE	LONG	343.50	345.30- 353	339	BOOKED PROF- IT
20-5-2019	ONGC	FUTURE	LONG	173	173.80- 176	142.90	BOOKED PROF- IT
20-5-2019	KOTAKBANK	FUTURE	LONG	1464	1471- 1490	1449	BOOKED PROF- IT
20-5-2019	PNBHOUSING	CASH	LONG	769	772.50- 785	760.90	BOOKED PROF- IT
20-5-2019	JUSTDIAL660CE	OPTION	LONG	24.50	27.50- 33.50	19.50	BOOKED PROF- IT

DISCLAIMER

www.capitalbuilder.in does not take any compensation of any kind whatsoever from any company that they mention on this website. All data and reports at **www.capitalbuilder.in** are only information services for investors and are not individualized recommendations to buy or sell securities, nor offers to buy or sell securities. The publishers of reports, reviews and analysis under **www.capitalbuilder.in** are not acting in any way to influence the purchase or sale of securities. The information provided is obtained from sources deemed reliable but is not guaranteed as to accuracy or completeness or as to the results obtained by individuals using such information. It is possible at this or some subsequent date, the publishers of reports, reviews and analysis at **www.capitalbuilder.in** may own, buy or sell securities presented. Each user shall be responsible for the risks of their own investment activities and, in no event, shall **www.capitalbuilder.in**, its publishers, employees, owners or investors, be liable for any losses or damages, monetary or otherwise, that result from actions taken after reading the contents of reports, reviews and analysis published on **www.capitalbuilder.in**. The publishers recommend that anyone trading securities should do so with caution and consult with a broker and financial advisor before.

- Capital Builder Financial Services comply with SEBI INVESTMENT ADVISOR GUIDELINES 2013, So please co-operate in providing KYC & Risk Profiling to our employees.
- Dear clients, Capital Builder Financial Services does not claim/give any assured/ guaranteed return, don't trade on personal calls, trade only in Company Research calls. Please beware of fraud calls/sms & misguided advise rumors like JACKPOT, HOT TIPS, SURESHOT kind of messages.
- Capital Builder Financial Services do not ask any client or any person to deposit money in any Employee Or any person's personal bank account details, so never deposit money in any Employee personal account.