

6 MAY 2019



Capital Builder

We Build Your Capital

- Stock Commodities Advisory • Real Estate
- Equity / Commodity / Currency Broking
- Auto Loans / LAP • Mutual Funds

ADDRESS

301-302, SHEKHER CENTRAL ,AB
ROAD,
Indore (M.P.) ,452001.

Email - support@capitalbuilder.in
info@capitalbuilder.in

NIFTY Roundup

Benchmark indices ended lower but off day's low on Monday amid fresh trade worries between US-China.

The Sensex was down 362.92 points at 38600.34, while Nifty was down 114 points at 11598.30. About 887 shares have advanced, 1581 shares declined, and 166 shares are unchanged.

Zee Entertainment, Titan Company, Yes Bank, Tata Motors and JSW Steel were among major losers on the indices, while gainers were BPCL, TCS, ITC, Bajaj Finserv and Bharti Airtel.

Except IT, all other sectoral indices ended in red led by metal, infra, bank, auto, pharma and FMCG.

World Indices

INDEX	VALUE	% CHANGE
DJI	26504	+0.75%
S&P 500	2945	+0.96%
NASDAQ	7845.73	+1.58%
EURO STO	3496	-0.17%
FTSE	7380	+0.40%
NIKKEI	22258	-0.22%

TOP GAINERS

COMPANY	VALUE	CHANGE
BPCL	390.35	+2.52%
TCS	2157.85	+1.21%
ITC	307.00	+0.90%
BHARTARTL	333.45	+0.60%
YESBANK	175.90	+1.24%

TOP LOSERS

COMPANY	VALUE	CHANGE
ZEEL	387.75	-5.75%
YESBANK	166.25	-5.49%
TITAN	1082.85	-5.43%
TATAMOTOR	199.80	-4.61%
JSWSTEEL	296.70	-3.93%

STOCKS 52 WEEK HIGH

COMPANY	VALUE	CHANGE
AAVAS	1364.80	3.29%
63MOON	159.10	4.98%
BALAXI	110.10	4.96%
FINEORG	1457	1.31%

STOCKS 52 WEEK LOW

COMPANY	VALUE	CHANGE
ADLABS	7.80	0.60%

INDIAN INDICES

INDEX	CMP	CHANGE	%CHANGE
SENSEX	38600	-363	-0.93%
NIFTY	11598	-114	-0.97%

STOCK RECOMMENDATIONS [FUTURE]

1 TCS

TCS FUTURES is looking BULLISH on charts, we may see UPSIDE movement. We advise BUY ABOVE 2170 with strict stop loss of 2140 the targets of 2195-2230 Levels.



2 INDIGO

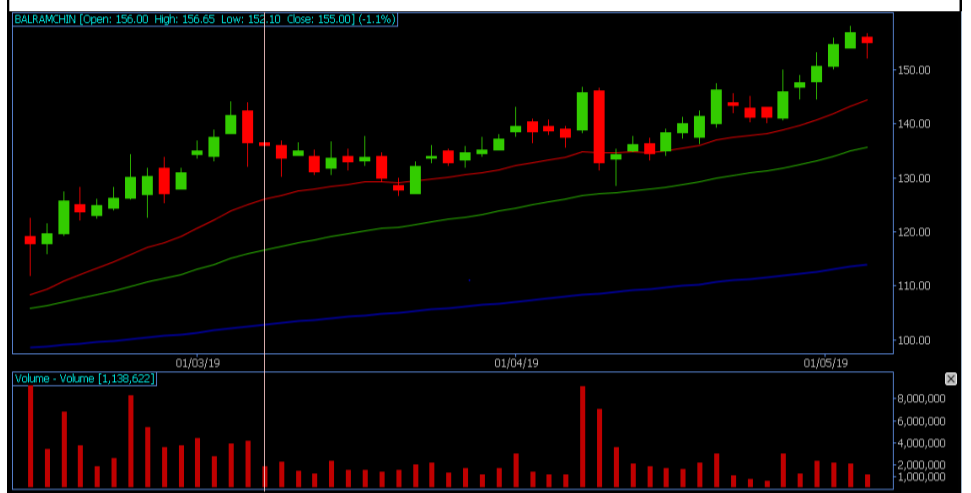
INDIGO FUTURES is looking BULLISH on charts. We advise BUY ABOVE 1575 with strict stop loss of 1560 for the targets of 1590-1615.



STOCK RECOMMENDATION [CASH]

1 BALRAMCHIN

BALRAMCHIN looking BULLISH on charts, we may see UPSIDE movement, We advise BUY above 155 with strict stop loss of 153 for the targets of 156-158 levels.



MACRO NEWS

U.S. President Donald Trump said on Sunday he would raise tariffs to 25 percent from 10 percent on \$200 billion of Chinese goods. The United States has levied tariffs on a total of \$250 billion of Chinese imports, global steel and aluminum imports, and shipments of washing machines and solar panels since January 2018, when Trump's administration levied its first trade tariffs.

LIC Housing Q4: Net profit up 16.7% at Rs 693.6 crore versus Rs 594.3 crore; revenue up 20.1% at Rs 4,655.1 crore versus Rs 3,877.6 crore, YoY

Federal Bank Q4: Net profit at Rs 381.5 crore versus Rs 145 crore; NII up 17.5% at Rs 1,096.5 crore versus Rs 933.3 crore, YoY.

6 MAY 2019

NIFTY FUTURES



Negative global cues accompanied with weak technical trends on domestic bourses appears to have empowered the bears. As a result, Nifty opened with a huge gap down of 94 points before signing off the session with a Doji kind of indecisive formation, The Nifty index formed a bearish Candle on the daily scale but managed to respect its major support of 11,550. The index has got stuck in the range of 11550-11800 from last 23 trading sessions where declines are being bought but follow-up is missing at higher zones, Now, if it fails to hold 11,550 then short-term trend could be under pressure to test the next support of 11,333 while hurdles are seen at 11,666 then 11,761. The index is likely to get support near 11,500-11,550.

BANK NIFTY FUTURES



The BANKNIFTY index closed 335.70 points DOWN at 29618.45 and formed a BEARISH candle on daily scale followed by candle on weekly scale. if it fails to hold 29,600 then short-term trend could be under pressure to test the next support of 29450 while hurdles are seen at 29,800 then 30,000. The index is likely to get support near 29600-29450.

INDICES	R1	R2	PIVOTS	S1	S2
NIFTY	11630.03	11661.87	11600	11568.83	11539.47
BANK NIFTY	29741.0	29863.60	29634.80	29512.20	29406

PERFORMANCE UPDATES

Date	Cash/ Futures/ option	Contract	Strategy	Entry Level	Target	Stop Loss	Remark
6-5-2019	BOMDYEING	CASH	LONG	129.50	130.20- 135	127.60	BOOKED PROF- IT
6-5-2019	TCS	FUTURE	LONG	2166	2176- 2190	2139	BOOKED PROF- IT
6-5-2019	IBULHSGFIN	FUTURE	SHORT	681.50	678-674	690	BOOKED PROF- IT
6-5-2019	RELCAPITAL	CASH	SHORT	130.70	129- 126.50	133.50	BOOKED PROF- IT
6-5-2019	BPCL390CE	OPTION	17.80	18.80	20.80	14.80	BOOKED PROF- IT

DISCLAIMER

www.capitalbuilder.in does not take any compensation of any kind whatsoever from any company that they mention on this website. All data and reports at **www.capitalbuilder.in** are only information services for investors and are not individualized recommendations to buy or sell securities, nor offers to buy or sell securities. The publishers of reports, reviews and analysis under **www.capitalbuilder.in** are not acting in any way to influence the purchase or sale of securities. The information provided is obtained from sources deemed reliable but is not guaranteed as to accuracy or completeness or as to the results obtained by individuals using such information. It is possible at this or some subsequent date, the publishers of reports, reviews and analysis at **www.capitalbuilder.in** may own, buy or sell securities presented. Each user shall be responsible for the risks of their own investment activities and, in no event, shall **www.capitalbuilder.in**, its publishers, employees, owners or investors, be liable for any losses or damages, monetary or otherwise, that result from actions taken after reading the contents of reports, reviews and analysis published on **www.capitalbuilder.in**. The publishers recommend that anyone trading securities should do so with caution and consult with a broker and financial advisor before.

- Capital Builder Financial Services comply with SEBI INVESTMENT ADVISOR GUIDELINES 2013, So please co-operate in providing KYC & Risk Profiling to our employees.
- Dear clients, Capital Builder Financial Services does not claim/give any assured/ guaranteed return, don't trade on personal calls, trade only in Company Research calls. Please beware of fraud calls/sms & misguided advise rumors like JACKPOT, HOT TIPS, SURESHOT kind of messages.
- Capital Builder Financial Services do not ask any client or any person to deposit money in any Employee Or any person's personal bank account details, so never deposit money in any Employee personal account.