

10 APR 2019



## Capital Builder

We Build Your Capital

- Stock Commodities Advisory
- Real Estate
- Equity / Commodity / Currency Broking
- Auto Loans / LAP
- Mutual Funds

### ADDRESS

301-302,SHEKHER CENTRAL ,AB  
ROAD,  
Indore (M.P.) ,452001.

**Email -** [support@capitalbuilder.in](mailto:support@capitalbuilder.in)  
[info@capitalbuilder.in](mailto:info@capitalbuilder.in)

10 APR 2019

## NIFTY Roundup

Benchmark indices ended near day's low on April 10 with Nifty finished below 11,600 level.

At close, the Sensex was down 353.87 points at 38585.35, and the Nifty was down 88.40 points at 11,583.60. About 1134 shares have advanced, 1369 shares declined, and 173 shares are unchanged.

Bharti Airtel, Asian Paints, Hindalco Industries, TCS and UPL were the top losers, while Tata Motors, Wipro, Cipla, HUL and Adani Ports were among major gainers on the Nifty.

Except auto and pharma, all other sectoral indices ended in red led by bank, metal, IT, infra, energy and FMCG.

## World Indices

INDEX	VALUE	% CHANGE
DJI	26150	-0.72%
S&P 500	2878	-0.61%
NASDAQ	7568	-0.41%
EURO STO	3437	+0.017%
FTSE	7422	-0.043%
NIKKEI	21724	0.054%

## TOP LOSERS

COMPANY	VALUE	CHANGE
BHARTIARTL	340	-3.30%
HINDALCO	211.75	-2.50%
TCS	2040.25	-2.45%
ASIANPAINT	1409.85	-2.42%
HDFCBANK	2237.35	-2.18%

## TOP GAINERS

COMPANY	VALUE	CHANGE
TATAMOTOR	216.05	4.93%
WIPRO	281	2.63%
CIPLA	546.45	2.72%
HUL	1694.15	0.81%
IOC	156.60	0.77%

## STOCKS 52 WEEK HIGH

COMPANY	VALUE	CHANGE
BALAXI	55.90	4.98%
BILENERGY	4.65	4.49%
TANLA	48.40	10.00%
J&KBANK	65.75	7.02%

## STOCKS 52 WEEK LOW

COMPANY	VALUE	CHANGE
ANGIND	0.85	5.88%

## INDIAN INDICES

INDEX	CMP	CHANGE	%CHANGE
SENSEX	38585.35	-353.87	-0.91%
NIFTY	11584.30	-87.65	-0.75%

### STOCK RECOMMENDATIONS [FUTURE]

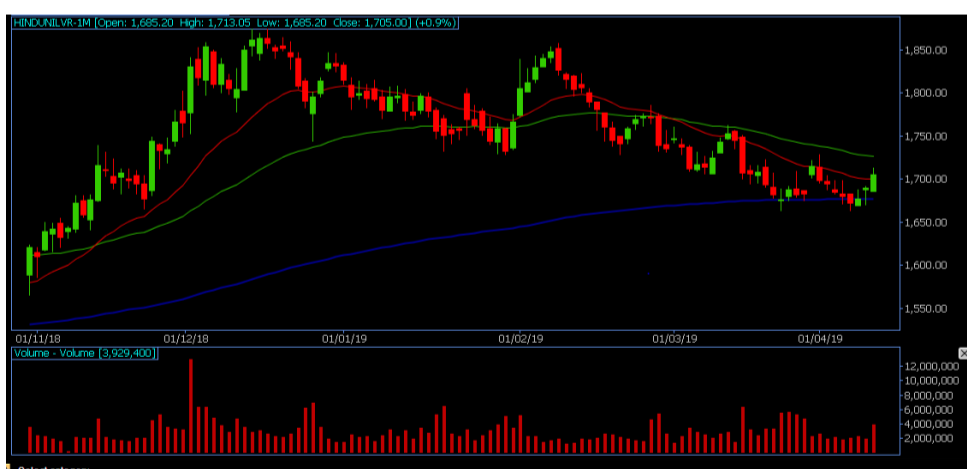
#### 1 ICICIPRULI

ICICIPRULI FUTURES is looking BULLISH on charts, we may see UPSIDE movement. We advise BUY ABOVE 365 with strict stop loss of 360 for the targets of 368-372 Levels.



#### 2 HINDUNILEVER

HINDUNILEVER FUTURES is looking BULLISH on charts. We advise BUY ABOVE 1705 with strict stop loss of 1680 for the targets of 1715-1740 levels.



### STOCK RECOMMENDATION [CASH]

#### 1 VIPIND

VIPIND looking BULLISH on charts, we may see UPSIDE movement, We advise BUY above 475 with strict stop loss of 470 for the targets of 480-485 levels



### MACRO NEWS

Praj Industries signed a construction license agreement with Gevo Inc, USA to commercialize technology for production of Isobutanol using sugary-based feedstock

SBI: Bank cut MCLR across tenors by five basis points. Home loan rates for up to Rs 30 lakh have been cut by 10 bps

EU leaders are to meet for an emergency summit in Brussels to decide whether to offer the UK another delay to Brexit: Prime Minister Theresa May wants to postpone the date the UK leaves the EU beyond this Friday and until 30 June. But the EU is expected to offer a longer delay, after European Council President Donald Tusk urged the other 27 leaders to back a flexible extension of up to a year - and with conditions.

10 APR 2019

## NIFTY FUTURES



"Nifty50 registered a bearish candle nullifying the positive noises witnessed in Tuesday's session as the game appears to be slowly slipping out of the hands of bulls. Interestingly, bulls appear to be attracting buying interest from around its 13 EMA which propped up the prices higher right from the beginning of the current leg of up move from the lows of 10,585 levels, "Nifty index has been consolidating between 11,550 and 11,750 zones from last nine trading sessions. Now if it fails to hold 11,550 zone then a short term profit booking decline could be seen towards immediate support of 11,520-11,500 zones while hurdles are placed at 11,666 and 11,680 zones.

## BANK NIFTY FUTURES



Bank Nifty is finding hurdle near 30,200 zones from past few trading sessions and slipped towards 29,750 level. The index closed 310.35 points lower at 29,803.50 and formed a bearish candle on daily scale as supply pressure is seen at higher levels. "Now it has to cross and hold above 30,250 zones to witness an upmove towards 30,500 zone while on the downside major support is seen at 29,700 zone and below that fresh downside could open towards 29,500 and 29,250 levels.

INDICES	R1	R2	PIVOTS	S1	S2
NIFTY	11652.27	11720.23	11612.03	11544.07	11503.83
BANK NIFTY	30050.17	30296.83	29909.13	29662	29521

## PERFORMANCE UPDATES

Date	Cash/ Futures/ option	Contract	Strategy	Entry Level	Target	Stop Loss	Remark
10-4-2019	TATASTEEL	FUTURE	LONG	558	561-570	551.80	BOOKED PROF-IT
10-4-2019	CANBK	FUTURE	LONG	285.70	287.15-290	282.20	BOOKED PROF-IT
10-4-2019	PRAJIND	CASH	LONG	148.50	149.20-152	146	BOOKED PROF-IT
10-4-2019	GOACARBON	CASH	LONG	485	487.50-493	479.80	BOOKED PROF-IT
10-4-2019	STAR500CE	OPTION	LONG	17.50	20-23.30	13.50	BOOKED PROF-IT

## DISCLAIMER

**www.capitalbuilder.in** does not take any compensation of any kind whatsoever from any company that they mention on this website. All data and reports at **www.capitalbuilder.in** are only information services for investors and are not individualized recommendations to buy or sell securities, nor offers to buy or sell securities. The publishers of reports, reviews and analysis under **www.capitalbuilder.in** are not acting in any way to influence the purchase or sale of securities. The information provided is obtained from sources deemed reliable but is not guaranteed as to accuracy or completeness or as to the results obtained by individuals using such information. It is possible at this or some subsequent date, the publishers of reports, reviews and analysis at **www.capitalbuilder.in** may own, buy or sell securities presented. Each user shall be responsible for the risks of their own investment activities and, in no event, shall **www.capitalbuilder.in**, its publishers, employees, owners or investors, be liable for any losses or damages, monetary or otherwise, that result from actions taken after reading the contents of reports, reviews and analysis published on **www.capitalbuilder.in**. The publishers recommend that anyone trading securities should do so with caution and consult with a broker and financial advisor before.

- Capital Builder Financial Services comply with SEBI INVESTMENT ADVISOR GUIDELINES 2013, So please co-operate in providing KYC & Risk Profiling to our employees.
- Dear clients, Capital Builder Financial Services does not claim/give any assured/ guaranteed return, don't trade on personal calls, trade only in Company Research calls. Please beware of fraud calls/sms & misguided advise rumors like JACKPOT, HOT TIPS, SURESHOT kind of messages.
- Capital Builder Financial Services do not ask any client or any person to deposit money in any Employee Or any person's personal bank account details, so never deposit money in any Employee personal account.

