



## Capital Builder

We Build Your Capital

- Stock Commodities Advisory
- Real Estate
- Equity / Commodity / Currency Broking
- Auto Loans / LAP
- Mutual Funds

### ADDRESS

301-302,SHEKHER CENTRAL ,AB  
ROAD,  
Indore (M.P.) ,452001.

Email - [support@capitalbuilder.in](mailto:support@capitalbuilder.in)  
[info@capitalbuilder.in](mailto:info@capitalbuilder.in)

## NIFTY Roundup

Benchmark indices ended higher on Tuesday with Nifty above 11,650 level supported by auto and banking stocks.

At close, the Sensex was up 238.69 points at 38939.22, while Nifty was up 67.50 points at 11,672. About 1152 shares have advanced, 1370 shares declined, and 148 shares are unchanged.

Yes Bank, Wipro, Tata Motors, ICICI Bank and Bajaj Auto were the top gainers on the Nifty, while losers include Indiabulls Housing, Asian Paints, Infosys, Bharti Airtel and Titan.

Except infra all other sectoral indices ended in green led by PSU Bank, metal, auto, pharma, energy, IT and FMCG.

## World Indices

INDEX	VALUE	% CHANGE
DJI	26341.02	-0.32%
S&P 500	2895	+0.10%
NASDAQ	7599	+0.28%
EURO STO	3437	+0.017%
FTSE	7455	+0.04%
NIKKEI	21724	0.054%

## TOP LOSERS

COMPANY	VALUE	CHANGE
ASIANPINT	1444.85	-3.44%
INDIABULLHSG	831.75	-3.21%
BHARTARTL	351.60	-0.94%
INFOSYS	760.60	-0.87%
TITAN	1098.55	-0.53%

## TOP GAINERS

COMPANY	VALUE	CHANGE
YESBANK	270.60	4.06%
WIPRO	273.80	3.83%
TATAMOTORS	205.90	2.67%
ICICIBANK	397.15	2.60%
BAJAJAUTO	2924.80	2.50%

## STOCKS 52 WEEK HIGH

COMPANY	VALUE	CHANGE
BALAXI	53.25	4.93%
BILENERGY	4.45	4.71%
MERCK	3994	3.80%
SPCENET	1.65	3.13%

## STOCKS 52 WEEK LOW

COMPANY	VALUE	CHANGE
ANGINDUSTRIES	0.85	0.00%

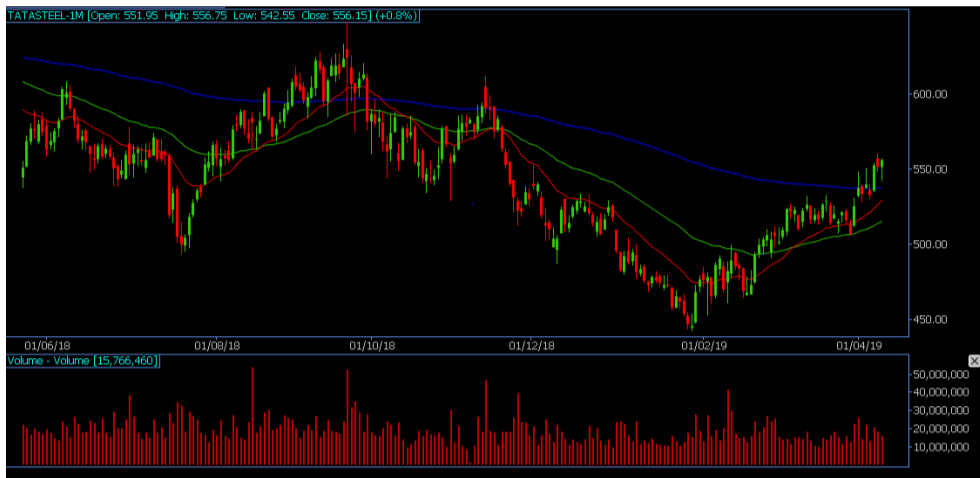
## INDIAN INDICES

INDEX	CMP	CHANGE	%CHANGE
SENSEX	39939	+238.69	+0.62
NIFTY	11671.95	+67.45	+0.58%

### STOCK RECOMMENDATIONS [FUTURE]

#### 1 TATASEEL

TATASTEEL FUTURES is looking BULLISH on charts, we may see UPSIDE movement. We advise BUY ABOVE 557 with strict stop loss of 550 for the targets of 561-565 Levels.



#### 2 RELIANCE

RELIANCE FUTURES is looking BULLISH on charts. We advise BUY ABOVE 1348 with strict stop loss of 1330 for the targets of 1358-1370 levels.



### STOCK RECOMMENDATION [CASH]

#### 1 VIPIND

VIPIND looking BULLISH on charts, we may see UPSIDE movement, We advise BUY above 468 with strict stop loss of 462 for the targets of 471-475 levels



### MACRO NEWS

China's on a bullion-buying spree as Asia's top economy expanded its gold reserves for a fourth straight month, adding to investors' optimism that central banks from around the world will press on with a drive to build up holdings. Prices advanced back toward US\$1,300 an ounce.

President Donald Trump's administration is proposing tariffs on new passenger helicopters, various cheeses and wines, ski-suits and certain motorcycles in response to harm the U.S. says is being caused by European Union subsidies to Boeing Co. rival Airbus SE.

Coffee Day Enterprises: Impact HD Inc (IHD) to invest \$15 million for 49 percent stake in company's subsidiary Coffee Day Consultancy Services Private Limited. After this deal, company and its subsidiary Coffee Day Global will hold 51 percent stake in Coffee Day Consultancy Services Private Limited.

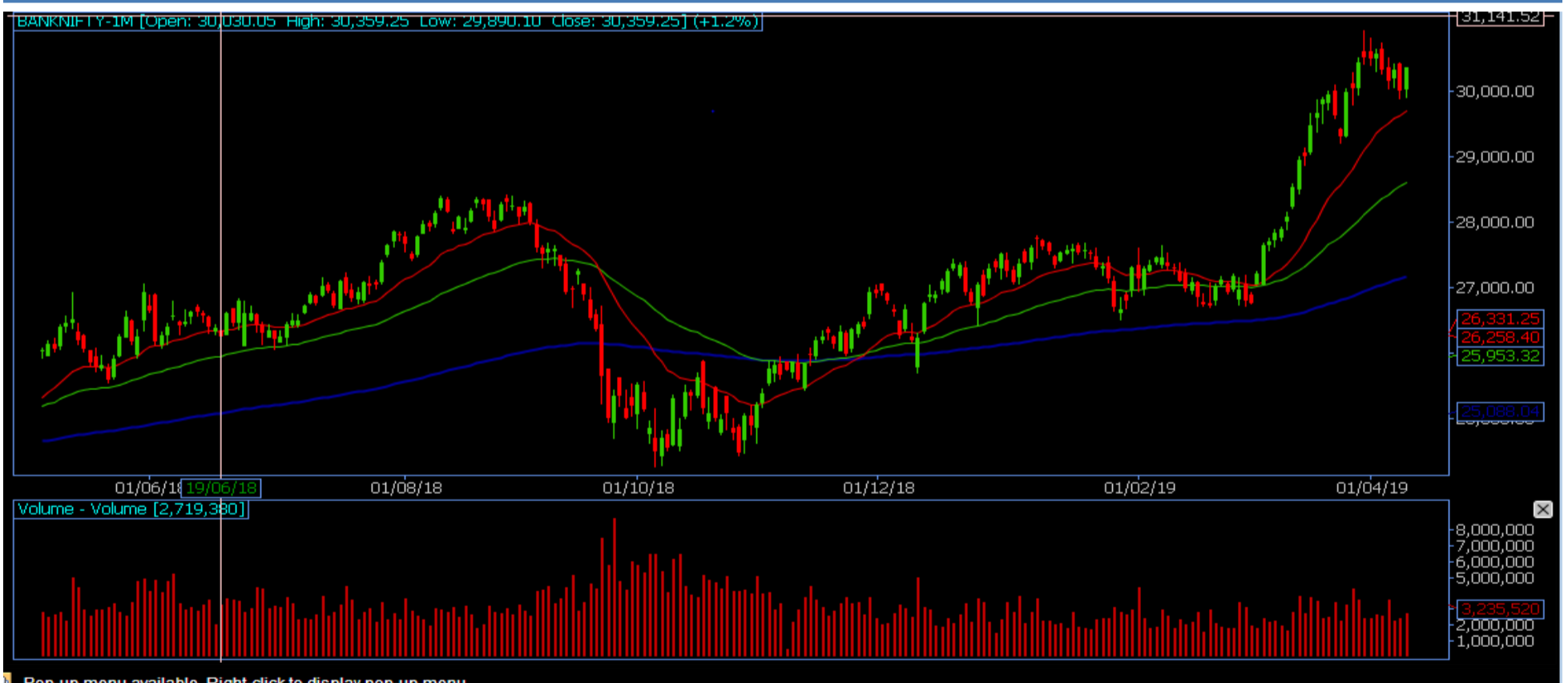
9 APR 2019

## NIFTY FUTURES



"Bulls appears to be putting up a tough fight around 11,550 levels as index bounced back at least on three occasions in the last 5 sessions from around the said levels. In Tuesday's session, Nifty registered a bullish candle. daily MACD indicator also generated a sell signal in last session pointing towards fading momentum on the upside. Index has been consolidating between 11,550 and 11,750 zone for last eight trading sessions and requires a decisive range breakout to commence the next leg of rally.

## BANK NIFTY FUTURES



Bank Nifty formed a Harami pattern and has been consolidating between 29,700 to 30,250 zones from last four trading sessions. The index closed at 30,113.85, up 268.55 points.

"Now it has to cross and hold above 30,250 zone to witness an up move towards 30,500 then 30,650 zones while on the downside major support is seen at 29,700 zone.

INDICES	R1	R2	PIVOTS	S1	S2
NIFTY	11714.03	11756.07	11641.87	11599.83	11527.67
BANK NIFTY	30455.67	30284.73	29994.17	23823.23	29532.67

## PERFORMANCE UPDATES

Date	Cash/ Futures/ option	Contract	Strategy	Entry Level	Target	Stop Loss	Remark
9-4-2019	STRTECH	CASH	SHORT	202	201-198	205	BOOKED PROF-IT
9-4-2019	IBULSHGFIN	FUTURE	SHORT	834	829.50-820	844	BOOKED PROF-IT
9-4-2019	BALRAMCHIN	CASH	LONG	133.80	134.50-138	131.90	BOOKED PROF-IT
9-4-2019	GODREJPROP	CASH	SHORT	895	890-884.50	906.20	BOOKED PROF-IT
9-4-2019	HCLTECH1120CE	OPTION	LONG	28	31-36.75	22.40	BOOKED PROF-IT

## DISCLAIMER

**www.capitalbuilder.in** does not take any compensation of any kind whatsoever from any company that they mention on this website. All data and reports at **www.capitalbuilder.in** are only information services for investors and are not individualized recommendations to buy or sell securities, nor offers to buy or sell securities. The publishers of reports, reviews and analysis under **www.capitalbuilder.in** are not acting in any way to influence the purchase or sale of securities. The information provided is obtained from sources deemed reliable but is not guaranteed as to accuracy or completeness or as to the results obtained by individuals using such information. It is possible at this or some subsequent date, the publishers of reports, reviews and analysis at **www.capitalbuilder.in** may own, buy or sell securities presented. Each user shall be responsible for the risks of their own investment activities and, in no event, shall **www.capitalbuilder.in**, its publishers, employees, owners or investors, be liable for any losses or damages, monetary or otherwise, that result from actions taken after reading the contents of reports, reviews and analysis published on **www.capitalbuilder.in**. The publishers recommend that anyone trading securities should do so with caution and consult with a broker and financial advisor before.

- Capital Builder Financial Services comply with SEBI INVESTMENT ADVISOR GUIDELINES 2013, So please co-operate in providing KYC & Risk Profiling to our employees.
- Dear clients, Capital Builder Financial Services does not claim/give any assured/ guaranteed return, don't trade on personal calls, trade only in Company Research calls. Please beware of fraud calls/sms & misguided advise rumors like JACKPOT, HOT TIPS, SURESHOT kind of messages.
- Capital Builder Financial Services do not ask any client or any person to deposit money in any Employee Or any person's personal bank account details, so never deposit money in any Employee personal account.

