

19 MAR 2019



## Capital Builder

We Build Your Capital

- Stock Commodities Advisory
- Real Estate
- Equity / Commodity / Currency Broking
- Auto Loans / LAP
- Mutual Funds

### ADDRESS

301-302,SHEKHER CENTRAL ,AB  
ROAD,  
Indore (M.P.) ,452001.

**Email -** [support@capitalbuilder.in](mailto:support@capitalbuilder.in)  
[info@capitalbuilder.in](mailto:info@capitalbuilder.in)

19 MAR 2019

## NIFTY Roundup

What looked like to be a day of consolidation turned out to be a day of 'buy on dips' as the S&P BSE Sensex rallied by over 250 points on Tuesday while Nifty50 closed above Monday's high of 11,530.

The final tally on D-Street – the S&P BSE Sensex rallied 268 points to 38,363 while the Nifty50 gained 70 points to close at 11,532.

Rallying for the seventh consecutive day in a row, benchmark indices hit a fresh 6-month high. The NiftyBank touched a fresh record closing high, led by gains in PNB, Bank of Baroda, Federal Bank, SBI, and Axis Bank.

On the sectoral front, FMCG, telecom and energy stocks rose over 1 percent each while capital goods, auto, and metal stocks saw a bit of profit-taking.

## World Indices

INDEX	VALUE	% CHANGE
DJI	25914	+0.25%
S&P 500	2833	+0.37%
NASDAQ	7326	+0.26%
EURO STO	3387	+0.30%
FTSE	7337	+0.52%
NIKKEI	21584	+0.62%

## TOP LOSERS

COMPANY	VALUE	CHANGE
LARSEN	1357	-1.52%
EITHERMOTOR	21759	-2.21%
JSWSTEEL	288.50	-2.19%
HEROMOTOCORP	2614.05	-2.08%
MARUTISUZUKI	6825.10	-1.21%

## TOP GAINERS

COMPANY	VALUE	CHANGE
BHARTIINFRTTEL	327.60	2.99%
HCLTECH	1036.20	2.39%
NTPC	134.90	1.97%
RELIANCE	1376.55	1.96%
ITC	299.45	1.94%

## STOCKS 52 WEEK HIGH

COMPANY	VALUE	CHANGE
ALOKTEXT	6.05	4.31%
ARVINDFASN	872.90	5.00%
CANTABIL	351.85	0.95%
REC	150.40	2.30%

## STOCKS 52 WEEK LOW

COMPANY	VALUE	CHANGE
KSS	0.10	-0.00%

## INDIAN INDICES

INDEX	CMP	CHANGE	%CHANGE
SENSEX	38363	+268.40	+0.70%
NIFTY	11532	+70.20	+0.61%

### STOCK RECOMMENDATIONS [FUTURE]

#### 1 ESCORT

ESCORT FUTURES is looking BULLISH on charts, we may see UPSIDE movement. We advise BUY ABOVE 816 with strict stop loss of 804 for the targets of 822-830 Levels.



#### 2 BEML

BEML FUTURES is looking BULLISH on charts. We advise BUY ABOVE 1000 with strict stop loss of 980 for the targets of 1010-1020 levels.



### STOCK RECOMMENDATION [CASH]

#### 1 HCLTECH

HCLTECH looking BULLISH on charts, we may see UPSIDE movement, We advise BUY above 1042 with strict stop loss of 1030 for the targets of 1050-1065 levels.



### MACRO NEWS

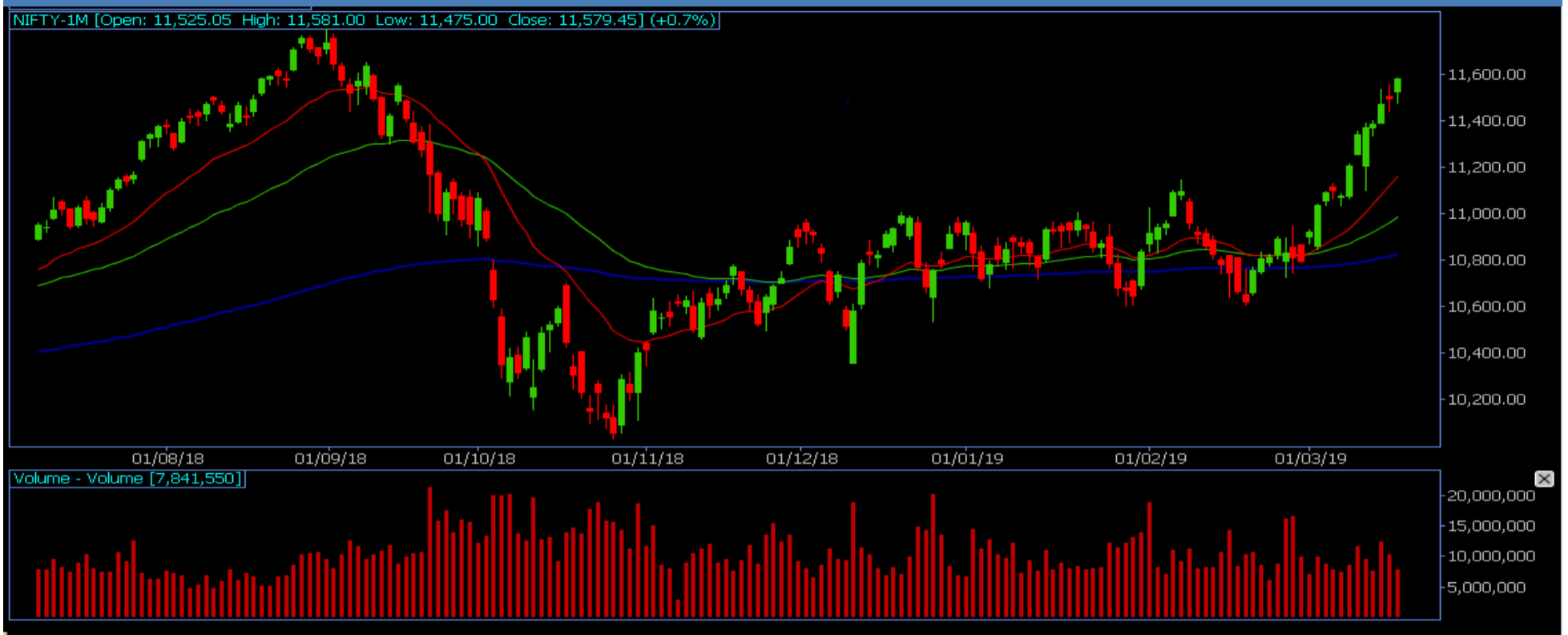
Coffee Day Trading subsidiary of Coffee Day Enterprises and Mr. V.G. Siddhartha (Promoter of the Company) have signed a definitive agreement to sell their entire stake in Mindtree

BEML: Board meeting is scheduled on March 21 to consider the interim dividend for the financial year 2018-19 on equity shares.

HCL Technologies entered into a shared services arrangement with Xerox Corporation

19 MAR 2019

## NIFTY FUTURES



The index formed a bullish candle, resembling a 'Hanging Man' pattern on the daily chart. In fact, the Hanging Man pattern has been seen in the last two out of five sessions. Nifty index formed a bullish candle on the daily scale and has been forming higher highs, higher lows from past seven trading sessions. Now it has to continue to hold above 11,450 to extend its up move towards 11,600; while on the downside, support exists at 11,380.

## BANK NIFTY FUTURES



Bank Nifty formed an Inside Bar on the daily scale but traded in a broader range of 29,550-29,800 for the most part of the session. The index closed 171.75 points higher at 29,767.85. It has been making higher lows from past thirteen trading sessions that suggest buying is witnessed at lower levels. Now it has to continue to hold above 29,500 to extend its momentum towards high of 30,000 then 30,200 while on the downside major support exists at 29,250.

INDICES	R1	R2	PIVOTS	S1	S2
NIFTY	11567	11601	11509	11474	11416
BANK NIFTY	29862	29957	29705	29610	29453

## PERFORMANCE UPDATES

Date	Cash/ Futures/ option	Contract	Strategy	Entry Level	Target	Stop Loss	Remark
19-3-2019	RELIANCE	FUTURE	LONG	1352	1358-1378	1340	BOOKED PROF-IT
19-3-2019	AXISBANK	CASH	LONG	752	755.30-765	743.90	BOOKED PROF-IT
19-3-2019	CANBK	CASH	LONG	277.30	278.90-283	273.40	BOOKED PROF-IT
19-3-2019	STAR	FUTURE	LONG	453.20	455.30-465	447	BOOKED PROF-IT
19-3-2019	M&M700PE	OPTION	LONG	23	25-27.50	19.90	BOOKED PROF-IT

## DISCLAIMER

**www.capitalbuilder.in** does not take any compensation of any kind whatsoever from any company that they mention on this website. All data and reports at **www.capitalbuilder.in** are only information services for investors and are not individualized recommendations to buy or sell securities, nor offers to buy or sell securities. The publishers of reports, reviews and analysis under **www.capitalbuilder.in** are not acting in any way to influence the purchase or sale of securities. The information provided is obtained from sources deemed reliable but is not guaranteed as to accuracy or completeness or as to the results obtained by individuals using such information. It is possible at this or some subsequent date, the publishers of reports, reviews and analysis at **www.capitalbuilder.in** may own, buy or sell securities presented. Each user shall be responsible for the risks of their own investment activities and, in no event, shall **www.capitalbuilder.in**, its publishers, employees, owners or investors, be liable for any losses or damages, monetary or otherwise, that result from actions taken after reading the contents of reports, reviews and analysis published on **www.capitalbuilder.in**. The publishers recommend that anyone trading securities should do so with caution and consult with a broker and financial advisor before.

- Capital Builder Financial Services comply with SEBI INVESTMENT ADVISOR GUIDELINES 2013, So please co-operate in providing KYC & Risk Profiling to our employees.
- Dear clients, Capital Builder Financial Services does not claim/give any assured/ guaranteed return, don't trade on personal calls, trade only in Company Research calls. Please beware of fraud calls/sms & misguided advise rumors like JACKPOT, HOT TIPS, SURESHOT kind of messages.
- Capital Builder Financial Services do not ask any client or any person to deposit money in any Employee Or any person's personal bank account details, so never deposit money in any Employee personal account.