

14 MAR 2019



Capital Builder

We Build Your Capital

- Stock Commodities Advisory
- Real Estate
- Equity / Commodity / Currency Broking
- Auto Loans / LAP
- Mutual Funds

ADDRESS

301-302,SHEKHER CENTRAL ,AB
ROAD,
Indore (M.P.) ,452001.

Email - support@capitalbuilder.in
info@capitalbuilder.in

14 MAR 2019

NIFTY Roundup

Benchmark indices ended flat in choppy session on Thursday.

At the close, the Sensex was up 2.72 points at 37754.89, while Nifty was up 1.60 points at 11343.30. About 1216 shares have advanced, 1468 shares declined, and 148 shares are unchanged.

Nifty Bank has crossed 29,000 for the first time today, but ended off day's high.

NTPC was the top gainer on the Nifty followed by IndusInd Bank, Yes Bank, Sun Pharma and Coal India, while Power Grid Corp lost 3 percent, followed by HCL Tech, Hero Motocorp, UltraTech Cement and Tata Motors.

Among the sectors, IT and auto stocks remained under pressure, while buying was seen in the metal and pharma stocks.

World Indices

INDEX	VALUE	% CHANGE
DJI	25702.89	+0.58%
S&P 500	2810.92	+0.69%
NASDAQ	7256.98	+0.77%
EURO STO	3314	+0.31%
FTSE	7211.68	+0.74%
NIKKEI	21290	-0.99%

TOP LOSERS

COMPANY	VALUE	CHANGE
ULTRATECHCEMENT	3964.15	-1.53%
HCLTECH	1006.75	-2.10%
TATAMOTOR	179.55	-1.18%
HEROMOTOCORP	2751.70	-1.85%
POWERGRIDCORP	187.60	-3.67%

TOP GAINERS

COMPANY	VALUE	CHANGE
NTPC	153.65	3.68%
YESBANK	249.85	2.27%
INDUSLAND	1682.70	2.83%
SUNPHARMA	466.15	2.11%
COALINDIA	243.20	1.91%

STOCKS 52 WEEK HIGH

COMPANY	VALUE	CHANGE
ABAN	72.45	4.98%
ANUP	663.75	4.99%
EIHOTEL	214.80	0.27%
ELAND	6.25	4.10%

STOCKS 52 WEEK LOW

COMPANY	VALUE	CHANGE
BCG	3.15	-4.55%

INDIAN INDICES

INDEX	CMP	CHANGE	%CHANGE
SENSEX	37754	2.72	+0.01%
NIFTY	11343	1.55	+0.01%

STOCK RECOMMENDATIONS [FUTURE]

1 BEML

BEML FUTURES is looking BULLISH on charts, we may see UPSIDE movement. We advise BUY ABOVE 978 with strict stop loss of 965 for the targets of 990-1020 Levels.



2 BPCL

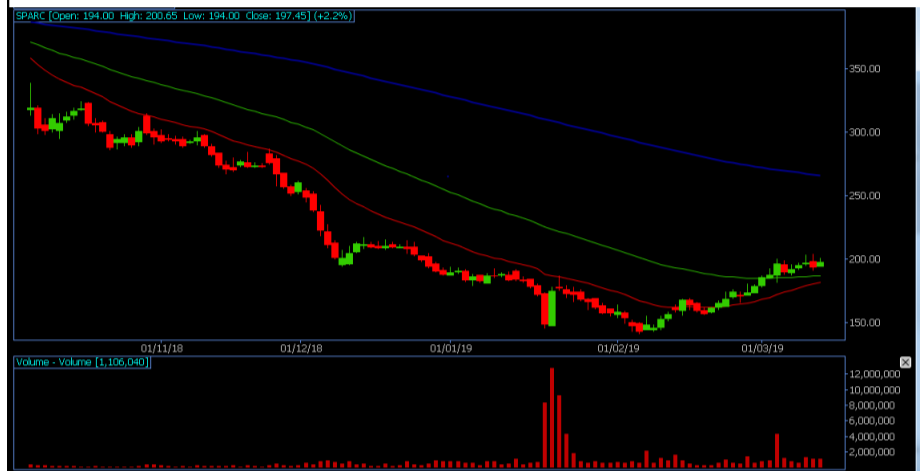
BPCL FUTURES is looking BULLISH on charts. We advise BUY ABOVE 391 with strict stop loss of 385 for the targets of 395-400 levels.



STOCK RECOMMENDATION [CASH]

1 SPARC

SPARC looking BULLISH on charts, we may see UPSIDE movement, We advise BUY above 199 with strict stop loss of 195 for the targets of 203-210 levels.



MACRO NEWS

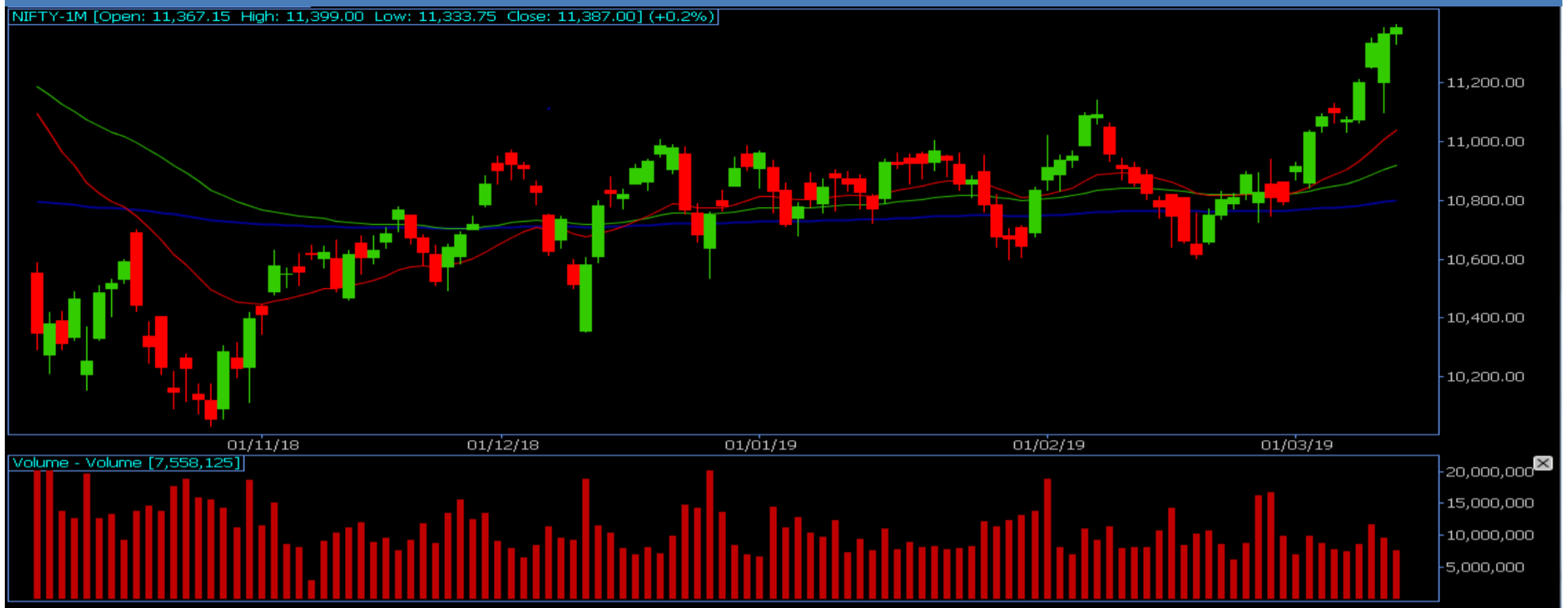
Lupin: USFDA classifies the inspection at the company's Mandideep (Unit 1) facility as 'Official Action Indicated'.

Japanese electronics and entertainment giant Sony Corp. is in advanced talks to buy a stake in Subhash Chandra-controlled Zee Entertainment Enterprises Ltd (ZEEL) and form a strategic partnership, three people aware of the discussions said. Chandra is looking to sell 20-25% stake in the BSE-listed company that is struggling to raise funds and pay off debt, said the people cited above, requesting anonymity.

Growth in China's industrial output fell to a 17-year low in the first two months of the year, pointing to further weakness in the world's second-biggest economy.

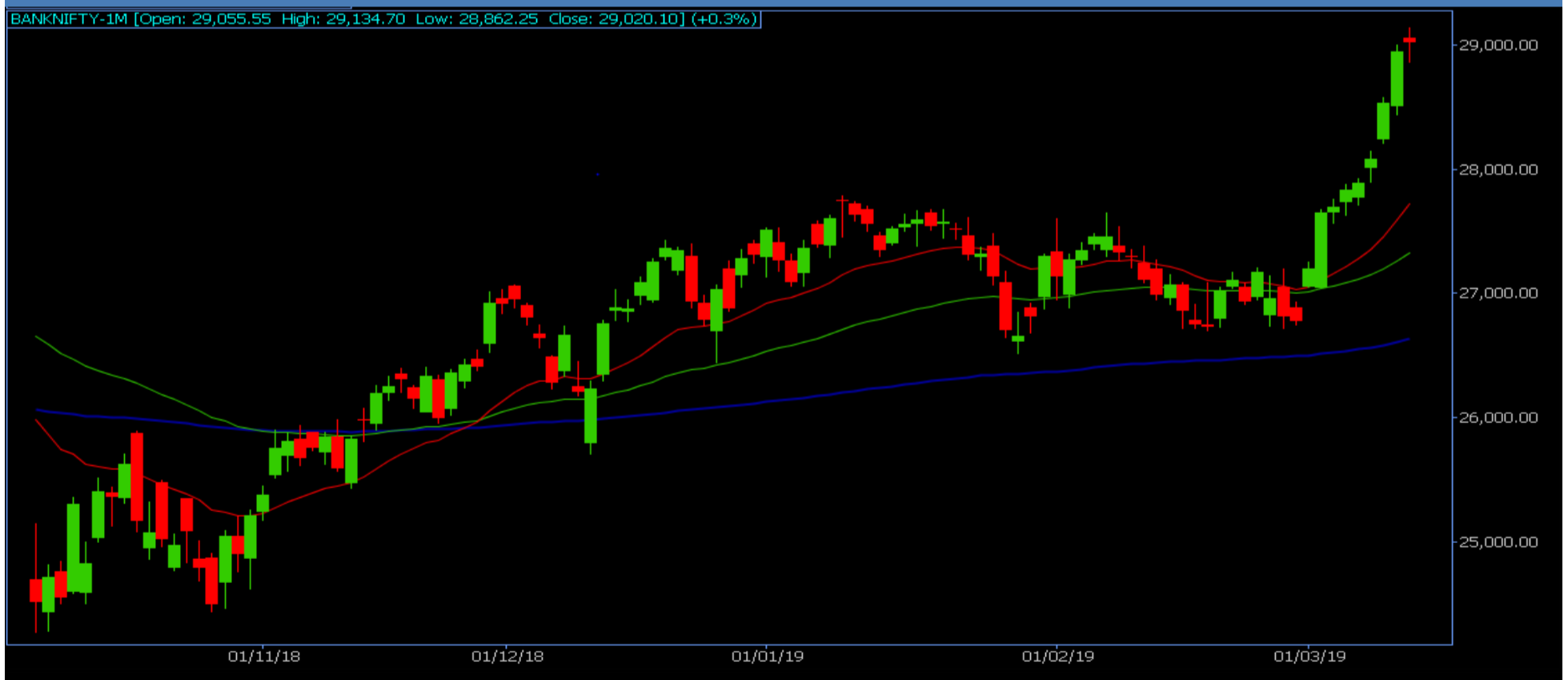
14 MAR 2019

NIFTY FUTURES



"Nifty50 registered a bearish candle on intraday charts, suggesting that market hit a pause mode for time being,"
 "On immediate basis Nifty index has to continue to hold above 11,280 to extend its upmove towards 11,400-11,450 while on the downside support exists at 11,280 then 11,222."

BANK NIFTY FUTURES



Bank Nifty opened positive and hit a fresh life-time high of 29,070, however, it failed to hold above 29,000 and slipped marginally towards 28,800. It later recovered from lower levels but formed a bearish candle on the daily scale. The index closed 38.80 points higher at 28,923.10.

"Now it has to continue to hold above 28,688 to extend its momentum towards new life-time high of 29,000 then 29,250 while on the downside major support exists at 28,500 then 28,388."

INDICES	R1	R2	PIVOTS	S1	S2
NIFTY	11379.87	11416	11346	11310	11277
BANK NIFTY	29055	29188	28937	28805	28687

PERFORMANCE UPDATES

Date	Cash/ Futures/ option	Contract	Strategy	Entry Level	Target	Stop Loss	Remark
14-3-2019	ESCORT	CASH	LONG	806	810.50-820	795	BOOKED PROF-IT
14-3-2019	BEML	FUTURE	LONG	971.70	976.50-991	959	BOOKED PROF-IT
14-3-2019	BOMDYING	CASH	LONG	135.30	136-140	133.40	BOOKED PROF-IT
14-3-2019	PRAJIND	CASH	LONG	158.30	159.10-162	156	BOOKED PROF-IT
14-3-2019	INDUSINDBK1650CE	OPTION	LONG	50	57	68	BOOKED PROF-IT

DISCLAIMER

www.capitalbuilder.in does not take any compensation of any kind whatsoever from any company that they mention on this website. All data and reports at **www.capitalbuilder.in** are only information services for investors and are not individualized recommendations to buy or sell securities, nor offers to buy or sell securities. The publishers of reports, reviews and analysis under **www.capitalbuilder.in** are not acting in any way to influence the purchase or sale of securities. The information provided is obtained from sources deemed reliable but is not guaranteed as to accuracy or completeness or as to the results obtained by individuals using such information. It is possible at this or some subsequent date, the publishers of reports, reviews and analysis at **www.capitalbuilder.in** may own, buy or sell securities presented. Each user shall be responsible for the risks of their own investment activities and, in no event, shall **www.capitalbuilder.in**, its publishers, employees, owners or investors, be liable for any losses or damages, monetary or otherwise, that result from actions taken after reading the contents of reports, reviews and analysis published on **www.capitalbuilder.in**. The publishers recommend that anyone trading securities should do so with caution and consult with a broker and financial advisor before.

- Capital Builder Financial Services comply with SEBI INVESTMENT ADVISOR GUIDELINES 2013, So please co-operate in providing KYC & Risk Profiling to our employees.
- Dear clients, Capital Builder Financial Services does not claim/give any assured/ guaranteed return, don't trade on personal calls, trade only in Company Research calls. Please beware of fraud calls/sms & misguided advise rumors like JACKPOT, HOT TIPS, SURESHOT kind of messages.
- Capital Builder Financial Services do not ask any client or any person to deposit money in any Employee Or any person's personal bank account details, so never deposit money in any Employee personal account.