

10 JULY 2019



Capital Builder

We Build Your Capital

- Stock Commodities Advisory
- Real Estate
- Equity / Commodity / Currency Broking
- Auto Loans / LAP
- Mutual Funds

ADDRESS

301-302,SHEKHER CENTRAL ,AB
ROAD,
Indore (M.P.) ,452001.

Email - support@capitalbuilder.in
info@capitalbuilder.in

NIFTY Roundup

Benchmark indices ended volatile session sharply lower with the Nifty falling below 11,500 at close for first time since May 17 this year.

The BSE Sensex was down 173.78 points at 38,557.04 and the Nifty50 fell 57 points to 11,498.90.

The market breadth remained in favour of bears as about three shares declined for every two shares rising on the BSE.

Nifty Midcap, Auto, Metal, PSU Bank and Realty indices slipped a percent each.

World Indices

INDEX	VALUE	% CHANGE
DJI	26722	-0.21%
S&P 500	2977	+0.18%
NASDAQ	7742	+1.66%
EURO STO	3505	-0.12%
FTSE	7555	+0.03%
NIKKEI	21533	-0.15%

TOP GAINERS

COMPANY	VALUE	CHANGE
YESBANK	93.25	+2.08%
COALINDIA	233.50	+1.70%
SUNPHRMA	390.45	+1.05%
ICICIBANK	431.70	+0.75%
KOTAKBANK	1470.50	+0.52%

TOP LOSERS

COMPANY	VALUE	CHANGE
BAJAJFINSERV	7511.90	-3.10%
BAJFINACE	3419	-5.11%
BPCL	349.85	-2.85%
TATASTEEL	454.15	-3.05%
IBULHSGFIN	657.70	-4.28%

STOCKS 52 WEEK HIGH

COMPANY	VALUE	CHANGE
MIL	10.00	+4.71%
REFEX	115.40	+4.96%
AGROPHOS	92.40	+4.55%
FCSSOFT	0.25	+4.96%

STOCKS 52 WEEK LOW

COMPANY	VALUE	CHANGE
3PLAND	7.95	-0.60%

INDIAN INDICES

INDEX	CMP	CHANGE	%CHANGE
SENSEX	38557	-174	-0.45%
NIFTY	11498	-57	-0.49%

STOCK RECOMMENDATIONS [FUTURE]

1 DIVISLAB

DIVISLAB FUTURES is looking BULLISH on charts, we may see UPSIDE movement. We advise BUY ABOVE 1630 with strict stop loss of for 1600 the targets of 1650-1670.



2 RBLBANK

RBLBANK FUTURES is looking BEARISH on charts. We advise SELL BELOW 628 with strict stop loss of 640 for the targets of 620-605.



STOCK RECOMMENDATION [CASH]

1 GODREJPROP

GODREJPROP looking on BULLISH charts, we may see UPSIDE movement, We advise BUY above 910 with strict stop loss of 899 for the targets of 920-930.



MACRO NEWS

JSW Steel: Committee of Creditors of Asian Colour Coated Ispat Limited (ACCIL) has issued a Letter of Intent to company's subsidiary JSW Steel Coated Products Limited (JSWSCPL). Subsidiary had submitted a resolution plan for ACCIL, a company undergoing insolvency resolution process under the Insolvency and Bankruptcy Code.

IndusInd Bank: Bank's Finance Committee approved the allotment of equity shares of IndusInd Bank to Bharat Financial Inclusion shareholders; allotment of share warrants to promoters of IndusInd Bank; and took on record appointment of Catalyst Trusteeship Ltd. to hold fractional entitlements arising from allotment of IndusInd Bank shares to the Bharat Financial shareholders in Trust for purpose of selling on the Stock Exchanges and onward distribution to Bharat Financial shareholders.

CUPID shares rallied 5 percent intraday on July 10 after the company registered its trademark in the US.

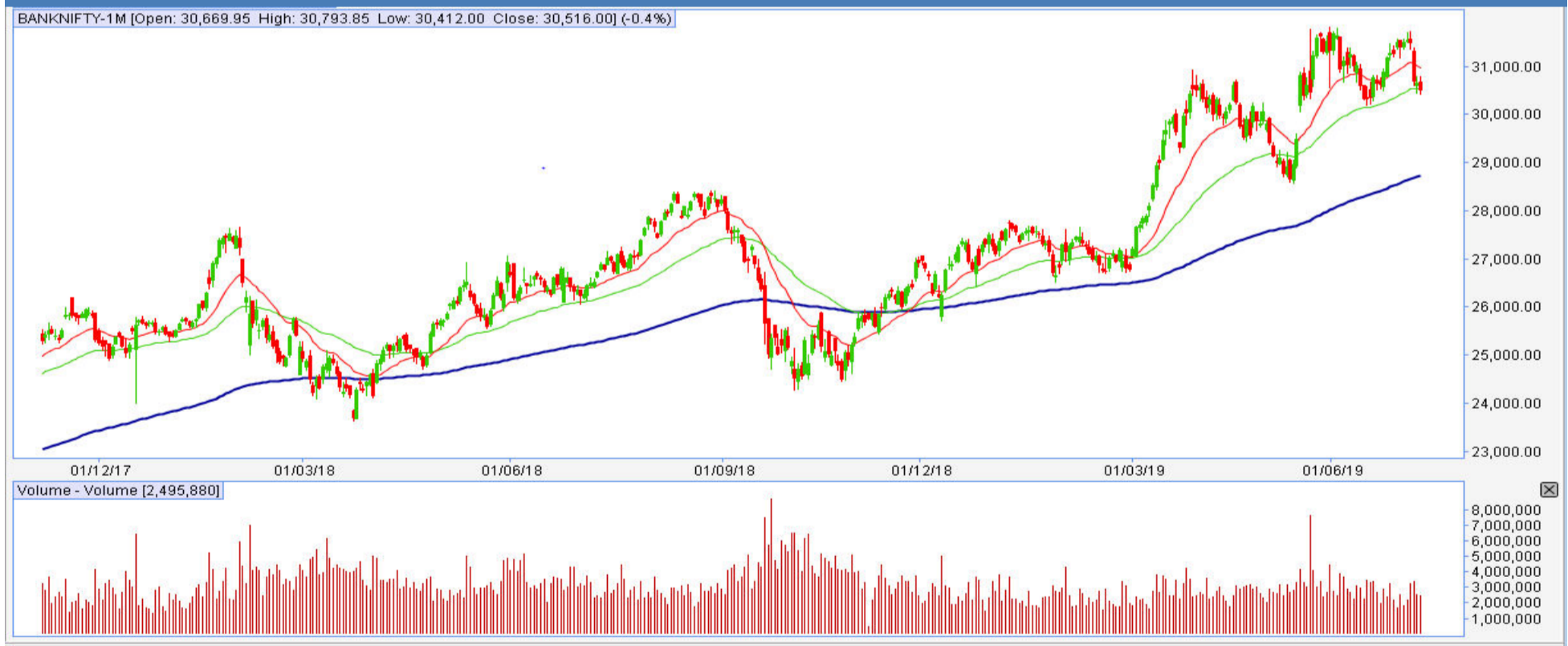
10 JULY 2019

NIFTY FUTURES



Nifty registered a bearish candle it managed to defend the corrective swing low 11,461 registered on July 9 and appears to be in a consolidation mode as it moved in a narrow range of around 55 points in last three and half hours of today's session. Hence one can remain hopeful of a pullback attempt as long as Nifty defends 11,460 on closing basis

BANK NIFTY FUTURES



Bank Nifty failed to hold above 30,600 zone but remained consolidative in range of 300 points for most part of the session. The index closed 47.05 points lower at 30,522.10 and formed a bearish candle on daily scale as selling pressure was seen at higher levels.

INDICES	R1	R2	PIVOTS	S1	S2
NIFTY	11569	11640	11522	11451	11404
BANK NIFTY	30690	30859	30559	30391	30259

PERFORMANCE UPDATES

Date	Cash/ Futures/ option	Contract	Strategy	Entry Level	Target	Stop Loss	Remark
10-7-2019	KOLTEPATIL	CASH	LONG	248	253-258	243	BOOKED PROF-IT
10-7-2019	GNFC	CASH	SHORT	233	231.70-230	236.30	BOOKED PROF-IT
10-7-2019	MINDAIND	CASH	LONG	303	305-310	298.90	BOOKED PROF-IT
10-7-2019	VOLTAS	FUTURE	SHORT	342	340-338-336	346.30	BOOKED PROF-IT
10-7-2019	BPCL360PE	OPTION	LONG	13	15-18	10.50	BOOKED PROF-IT

DISCLAIMER

www.capitalbuilder.in does not take any compensation of any kind whatsoever from any company that they mention on this website. All data and reports at **www.capitalbuilder.in** are only information services for investors and are not individualized recommendations to buy or sell securities, nor offers to buy or sell securities. The publishers of reports, reviews and analysis under **www.capitalbuilder.in** are not acting in any way to influence the purchase or sale of securities. The information provided is obtained from sources deemed reliable but is not guaranteed as to accuracy or completeness or as to the results obtained by individuals using such information. It is possible at this or some subsequent date, the publishers of reports, reviews and analysis at **www.capitalbuilder.in** may own, buy or sell securities presented. Each user shall be responsible for the risks of their own investment activities and, in no event, shall **www.capitalbuilder.in**, its publishers, employees, owners or investors, be liable for any losses or damages, monetary or otherwise, that result from actions taken after reading the contents of reports, reviews and analysis published on **www.capitalbuilder.in**. The publishers recommend that anyone trading securities should do so with caution and consult with a broker and financial advisor before.

- Capital Builder Financial Services comply with SEBI INVESTMENT ADVISOR GUIDELINES 2013, So please co-operate in providing KYC & Risk Profiling to our employees.
- Dear clients, Capital Builder Financial Services does not claim/give any assured/ guaranteed return, don't trade on personal calls, trade only in Company Research calls. Please beware of fraud calls/sms & misguided advise rumors like JACKPOT, HOT TIPS, SURESHOT kind of messages.
- Capital Builder Financial Services do not ask any client or any person to deposit money in any Employee Or any person's personal bank account details, so never deposit money in any Employee personal account.