



Capital Builder

We Build Your Capital

- Stock Commodities Advisory • Real Estate
- Equity / Commodity / Currency Broking
- Auto Loans / LAP • Mutual Funds

ADDRESS

301-302,SHEKHER CENTRAL ,AB
ROAD,
Indore (M.P.) ,452001.

Email - support@capitalbuilder.in
info@capitalbuilder.in

NIFTY Roundup

After trading sideways for most of today's session, benchmark indices ended near the day's low with the Nifty closing below 11,950 levels.

At Close, the Sensex was down 267.64 points at 37,060.37, while Nifty was down 98.30 points at 10,918.70. About 653 shares have advanced, 1800 shares declined, and 144 shares are unchanged.

Hero Motocorp, Maruti Suzuki, Infosys, Tech Mahindra and HUL were among major gainers on the Nifty, while losers were Tata Motors, Indiabulls Housing, Yes Bank, Grasim Industries and Tata Steel.

All the sectoral indices ended lower led by the metal, PSU bank, energy, infra, FMCG, auto, pharma and IT.

World Indices

INDEX	VALUE	% CHANGE
DJI	26093	+0.62%
S&P 500	2900	-0.79%
NASDAQ	7895	+1.67%
EURO STO	3390	+1.39%
FTSE	7198	+1.31%
NIKKEI	20618	-0.28%

TOP GAINERS

COMPANY	VALUE	CHANGE
HEROMOTOCO	2713	+1.64%
MARUTI	6250.90	+0.97%
TECHM	673.70	+0.72%
INFY	799.25	+0.82%
EICHERMOT	15980	+0.53%

TOP LOSERS

COMPANY	VALUE	CHANGE
TATAMOTOR	112	-9.57%
YESBANK	65.05	-8.64%
IBULHSGFIN	474.80	-8.94%
GRASIM	695.05	-4.69%
TATASTEEL	342	-4.54%

STOCKS 52 WEEK HIGH

COMPANY	VALUE	CHANGE
AGCNET	130.80	+0.42%
DEN	83	+15.32%
TRENT	489.25	-1.20%
VISHAL	412	-0.29%

STOCKS 52 WEEK LOW

COMPANY	VALUE	CHANGE
ATLANTA	6.50	-4.41%

INDIAN INDICES

INDEX	CMP	CHANGE	%CHANGE
SENSEX	37060	-268	-0.72%
NIFTY	10918	-98.30	-0.89%

STOCK RECOMMENDATIONS [FUTURE]

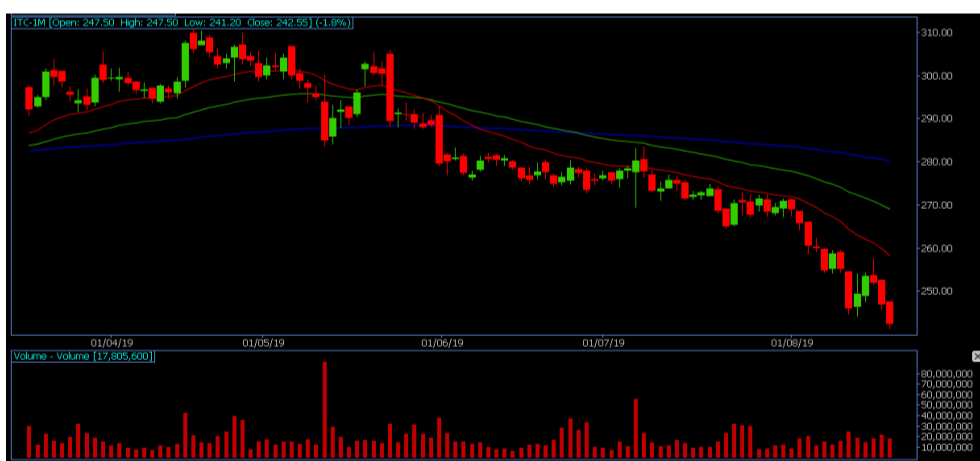
1 TITAN

TITAN FUTURES is looking BEARISH on charts, we may see DOWNSIDE movement. We advise BUY BELOW 1060 with strict stop loss of for 1075 the targets of 1050-1030.



2 ITC

ITC FUTURES is looking BEARISH on charts. We advise SELL BELOW 243 with strict stop loss of 248.30 for the targets of 240-237.



STOCK RECOMMENDATION [CASH]

1 SUVEN

SUVEN looking on BULLISH charts, we may see UPSIDE movement, We advise BUY above 255 with strict stop loss of 249.80 for the targets of 258-262.



MACRO NEWS

IGL which retails CNG and piped cooking gas in the national capital and adjoining cities jumped over 3 percent intraday on August 16 after the company reported a 24 percent rise in June quarter net profit on higher sales volumes.

Shares of SADBHAV ENGINEERING Fell 4.5 percent intraday on August 16 as Kotak Institutional Equities slashed target price by 30 percent after subdued earnings in Q1.

PRAJ INDUSTRIES has entered into a cooperation agreement with Dedini S/A Industries de Base to provide ethanol production technologies to the Brazilian market

NIFTY FUTURES



Nifty after opening flat at 11,018.15 immediately turned lower and gradually extended fall as the day progressed to hit an intra-day low of 10,906.65. The index closed 98.30 points lower at 10,918.70. India VIX moved up 2.36 percent to 17.02.

The falling near the lower end of the range indicates the market is in bears' control, and rising volatility is giving putting sustained pressure at every bounce hence, there could be more sell-off if index dips decisively below 10,900 in the coming sessions

BANK NIFTY FUTURES



Bank Nifty has formed lower highs-lower lows pattern from the last two trading sessions. It fell from 28,500 to 27,700. The index closed at 27,719.05, down 263.40 points.

The index formed a bearish candle on the daily scale and has been finding sustained selling pressure at higher levels.

"If it holds below 27,700 then it may drift towards 27,500, then 27,350 while on the upside hurdle is seen at 28,000, then 28,350 level .

INDICES	R1	R2	PIVOTS	S1	S2
NIFTY	10999.70	11080.70	10953.20	10872.20	10825.70
BANK NIFTY	27989	28260	27828.07	27557	27395

PERFORMANCE UPDATES

Date	Cash/ Futures/ option	Contract	Strategy	Entry Level	Target	Stop Loss	Remark
21-8-2019	BBTC	CASH	SHORT	770	766-751	781	BOOKED PROF-IT
21-8-2019	SUVEN	CASH	LONG	250	251.80-254	245	BOOKED PROF-IT
21-8-2019	ITC	FUTURE	SHORT	245	243.80-242.50	248.30	BOOKED PROF-IT
21-8-2019	SBIN	FUTURE	SHORT	280	278.60-277	283.10	BOOKED PROF-IT
21-8-2019	ESCORT450PE	OPTION	LONG	12	13.30-15	8.90	BOOKED PROF-IT

DISCLAIMER

www.capitalbuilder.in does not take any compensation of any kind whatsoever from any company that they mention on this website. All data and reports at **www.capitalbuilder.in** are only information services for investors and are not individualized recommendations to buy or sell securities, nor offers to buy or sell securities. The publishers of reports, reviews and analysis under **www.capitalbuilder.in** are not acting in any way to influence the purchase or sale of securities. The information provided is obtained from sources deemed reliable but is not guaranteed as to accuracy or completeness or as to the results obtained by individuals using such information. It is possible at this or some subsequent date, the publishers of reports, reviews and analysis at **www.capitalbuilder.in** may own, buy or sell securities presented. Each user shall be responsible for the risks of their own investment activities and, in no event, shall **www.capitalbuilder.in**, its publishers, employees, owners or investors, be liable for any losses or damages, monetary or otherwise, that result from actions taken after reading the contents of reports, reviews and analysis published on **www.capitalbuilder.in**. The publishers recommend that anyone trading securities should do so with caution and consult with a broker and financial advisor before.

- Capital Builder Financial Services comply with SEBI INVESTMENT ADVISOR GUIDELINES 2013, So please co-operate in providing KYC & Risk Profiling to our employees.
- Dear clients, Capital Builder Financial Services does not claim/give any assured/ guaranteed return, don't trade on personal calls, trade only in Company Research calls. Please beware of fraud calls/sms & misguided advise rumors like JACKPOT, HOT TIPS, SURESHOT kind of messages.
- Capital Builder Financial Services do not ask any client or any person to deposit money in any Employee Or any person's personal bank account details, so never deposit money in any Employee personal account.