



Capital Builder

We Build Your Capital

- Stock Commodities Advisory
- Real Estate
- Equity / Commodity / Currency Broking
- Auto Loans / LAP
- Mutual Funds

ADDRESS

301-302,SHEKHER CENTRAL ,AB
ROAD,
Indore (M.P.) ,452001.

Email - support@capitalbuilder.in
info@capitalbuilder.in

NIFTY Roundup

The Indian indices broke the two days of losing streak and ended positive to flat on March 11.

At close, the Sensex was up 62.45 points at 35,697.40, while Nifty was up 6.90 points at 10,458.40. About 1022 shares have advanced, 1414 shares declined, and 165 shares are unchanged.

Yes Bank, Zee Entertainment, Bharti Infratel, Coal India and Hero MotoCorp were among major gainers on the Nifty, while losers were GAIL, Tata Steel, Tata Motors, IndusInd Bank and BPCL.

Among sectors, except FMCG all other indices ended lower. BSE Midcap and Smallcap indices also ended lower.

World Indices

INDEX	VALUE	% CHANGE
DOW	24217	-2.54%
S&P 500	2788	-2.71%
NASDAQ	9273	+1.34%
EURO STO	2929	+0.67%
FTSE	5971	+0.19%
NIKKEI	19416	-2.27%

TOP GAINERS

COMPANY	VALUE	CHANGE
YESBANK	29.05	36.71%
ZEEL	209	7.48%
INFRATEL	224.95	6.61%
COALINDIA	166.70	5.54%
HEROMOTOCO	2037.05	4.14%

TOP LOSERS

COMPANY	VALUE	CHANGE
GAIL	90.20	-10.20%
TATASTEEL	297.30	-7.76%
TATAMOTOR	98.35	-6.95%
INDUSINDBK	845.15	-6.42%
BPCL	402	-5.16%

STOCKS 52 WEEK HIGH

COMPANY	VALUE	CHANGE
PIDILITIND	1705	+4.00%
SUVENPHAR	353.90	-2.09%
BAFNAPH	6	+4.35%
RUCHI	353.90	-2.09%

STOCKS 52 WEEK LOW

COMPANY	VALUE	CHANGE
APTECHT	96.50	-1.22%

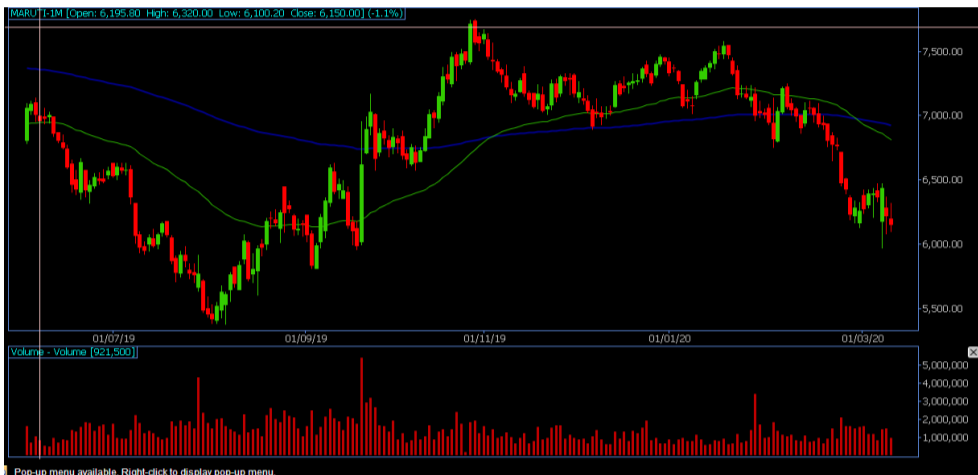
INDIAN INDICES

INDEX	CMP	CHANGE	%CHANGE
SENSEX	39745	-143	-0.36%
NIFTY	11633	-45	-0.39%

STOCK RECOMMENDATIONS [FUTURE]

1 MARUTI

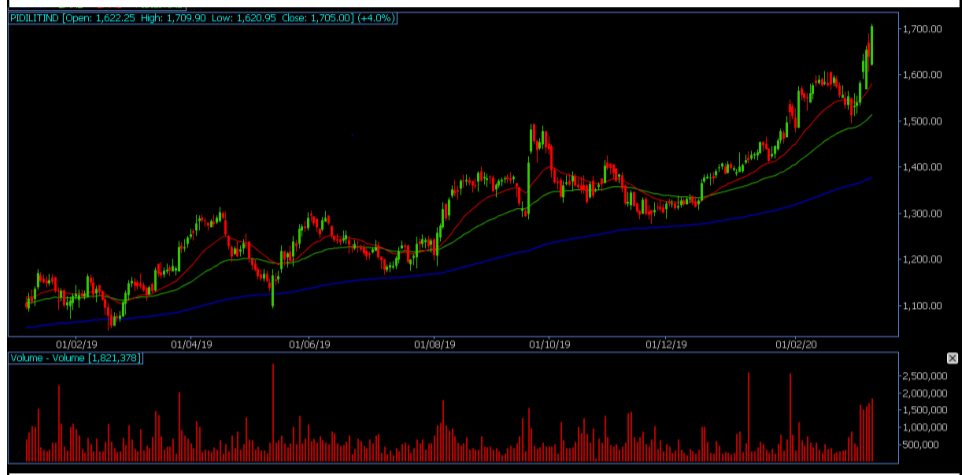
MARUTI FUTURES is looking BEARISH on charts, we may see UPSIDE movement. We advise SELL BELOW 6100 with strict stop loss of 6150 for the targets of 6050-6000.



STOCK RECOMMENDATION [CASH]

1 PIDILITE

PIDILITE is looking BULLISH on charts, we may SEE UPSIDE movement, We advise BUY above 1700 with strict stop loss of 1680 for the targets of 1720-1740.



2 ESCORT

ESCORT is looking BEARISH on charts. We advise SELL BELOW 748 with strict stop loss of 758 for the targets of 738-728 .



MACRO NEWS

Shares of GAIL INDIA fell 10 percent on March 11 after global brokerage Credit Suisse downgraded its rating on the stock to underperform from outperform citing sharp fall in oil prices.

BANDHANBK share price gained 3.9 percent intraday on March 11 after the private sector lender told the BSE that it had launched 125 new banking outlets.

NIFTY FUTURES



The Nifty50 after opening sharply lower at 10,334.30 turned volatile. The index hit an intraday low of 10,334 in the morning and high of 10,545.10 in the afternoon, before closing 6.90 points higher at 10,458.40. "Hence, sustaining above 10294 levels sideways consolidation with positive bias can be expected. In case Nifty manages to trade above 10,550 levels consistently in next trading session then eventually in next couple of days it can aim to test the bearish gap, registered on 9th of March present in the zone of 10751 – 10827 levels,

BANK NIFTY FUTURES



"200-weekly EMA support for the index is placed at 25,500 zone. Bank Nifty is trading below all near term key averages which suggest strong momentum on the downside, however bear market rallies can be sharp & vicious on the upside which traders need to keep in mind. We see support for the index at 26,200-25,900, while the resistance is 26,800-27,200,

INDICES	R1	R2	PIVOTS	S1	S2
NIFTY	10557	10656	10445	11346	10234
BANK NIFTY	26774	27061	26504	26217	25947

PERFORMANCE UPDATES

Date	Cash/ Futures/ option	Contract	Strategy	Entry Level	Target	Stop Loss	Remark
11-MAR-2020	WOCKPHARMA	CASH	SHORT	261	259-256	265	BOOKED PROF-IT
11-MAR-2020	HDFC2040CE	OPTION	LONG	76	80-86	66	BOOKED PROF-IT
11-MAR-2020	ESCORT	FUTURE	SHORT	762	758-754	771	BOOKED PROF-IT
11-MAR-2020	VEDL95PE	OPTION	LONG	8	8.40-8.80	6.90	BOOKED PROF-IT
11-MAR-2020	ASIANPAINT	CASH	SHORT	1867	1858	1879	BOOKED PROF-IT

DISCLAIMER

www.capitalbuilder.in does not take any compensation of any kind whatsoever from any company that they mention on this website. All data and reports at **www.capitalbuilder.in** are only information services for investors and are not individualized recommendations to buy or sell securities, nor offers to buy or sell securities. The publishers of reports, reviews and analysis under **www.capitalbuilder.in** are not acting in any way to influence the purchase or sale of securities. The information provided is obtained from sources deemed reliable but is not guaranteed as to accuracy or completeness or as to the results obtained by individuals using such information. It is possible at this or some subsequent date, the publishers of reports, reviews and analysis at **www.capitalbuilder.in** may own, buy or sell securities presented. Each user shall be responsible for the risks of their own investment activities and, in no event, shall **www.capitalbuilder.in**, its publishers, employees, owners or investors, be liable for any losses or damages, monetary or otherwise, that result from actions taken after reading the contents of reports, reviews and analysis published on **www.capitalbuilder.in**. The publishers recommend that anyone trading securities should do so with caution and consult with a broker and financial advisor before.

- Capital Builder Financial Services comply with SEBI INVESTMENT ADVISOR GUIDELINES 2013, So please co-operate in providing KYC & Risk Profiling to our employees.
- Dear clients, Capital Builder Financial Services does not claim/give any assured/ guaranteed return, don't trade on personal calls, trade only in Company Research calls. Please beware of fraud calls/sms & misguided advise rumors like JACKPOT, HOT TIPS, SURESHOT kind of messages.
- Capital Builder Financial Services do not ask any client or any person to deposit money in any Employee Or any person's personal bank account details, so never deposit money in any Employee personal account.