



ADDRESS

301-302,SHEKHER CENTRAL ,AB
ROAD,
Indore (M.P.) ,452001.

Email - support@capitalbuilder.in
info@capitalbuilder.in



Capital Builder

We Build Your Capital

- Stock Commodities Advisory • Real Estate
- Equity / Commodity / Currency Broking
- Auto Loans / LAP • Mutual Funds

NIFTY Roundup

Benchmark indices ended lower for the fifth consecutive session but recovered from the day's low in the final hour of trade helping Nifty to close above 11,600.

At close, the Sensex was down 143.30 points at 39745.66, while Nifty was down 45.20 points at 11633.30. About 842 shares have advanced, 1549 shares declined, and 157 shares are unchanged.

Wipro, JSW Steel, Zee Entertainment, ONGC and IOC were among major losers on the Nifty, while gainers include Sun Pharma, Britannia, Titan Company, Grasim Industries and Axis Bank.

Except pharma, all other indices ended in the red. Nifty PSU Bank index fell 2.5 percent, followed by the IT, energy, metal, infra and auto. BSE Midcap index fell 0.6 percent, while BSE Smallcap index shed nearly 1 percent.

World Indices

INDEX	VALUE	% CHANGE
DOW	28194	-2.72%
S&P 500	3248	-2.27%
NASDAQ	9273	+1.34%
EURO STO	3663	-3.44%
FTSE	7149	-3.44%
NIKKEI	23386	-0.39%

TOP GAINERS

COMPANY	VALUE	CHANGE
SUNPHARMA	388	3.55%
BRITANNIA	3099	1.93%
TITAN	1278	1.86%
GRASIM	710	1.08%
AXISBANK	737	1.08%

TOP LOSERS

COMPANY	VALUE	CHANGE
WIPRO	231.45	-3.52%
JSWSTEEL	252.90	-3.03%
ONGC	93	-3.03%
IOC	106	-2.49%
ZEEL	245	-2.33%

STOCKS 52 WEEK HIGH

COMPANY	VALUE	CHANGE
AARTIDRUG	812	+1.20%
CAREERP	159	-0.49%
ESSELPACK	225	+0.93%
LASA	47.50	+4.97%

STOCKS 52 WEEK LOW

COMPANY	VALUE	CHANGE
ABB	1189	-0.28%

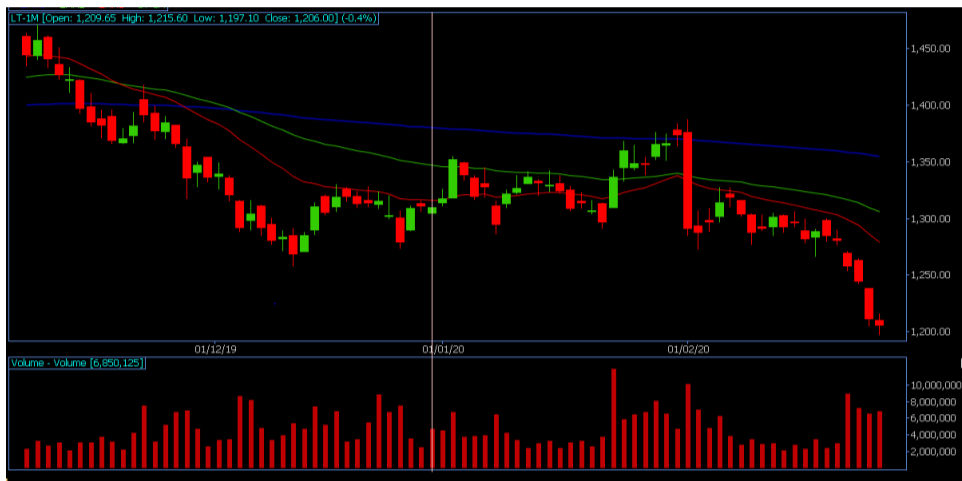
INDIAN INDICES

INDEX	CMP	CHANGE	%CHANGE
SENSEX	39745	-143	-0.36%
NIFTY	11633	-45	-0.39%

STOCK RECOMMENDATIONS [FUTURE]

1 LT

LT FUTURES is looking BULLISH on charts, we may see UPSIDE movement. We advise BUY ABOVE 1215 with strict stop loss of 1197 for the targets of 1225-1235.



2 MARUTI

MARUTI is looking BULLISH on charts. We advise BUY ABOVE 6315 with strict stop loss of 6250 for the targets of 6365-6450.



STOCK RECOMMENDATION [CASH]

1 LT

LT is looking BEARISH on charts, we may SEE UPSIDE movement, We advise BUY above 1212 with strict stop loss of 1199 for the targets of 1225-1235

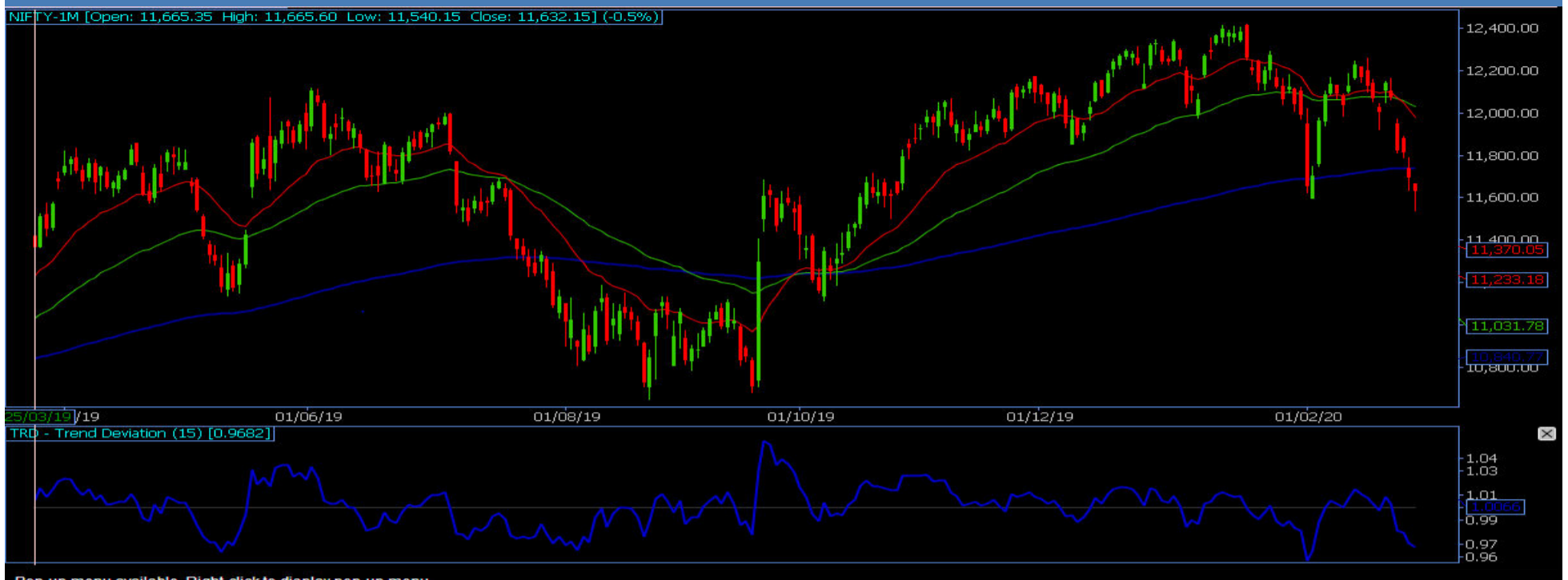


MACRO NEWS

The virulence of the novel coronavirus continues to show a declining trend in China which reported 29 new fatalities, the lowest in weeks, taking the death toll to 2,744 while the confirmed cases climbed to 78,497, officials said on Thursday.

INDIACEMENT share price rose over 6 percent in early trade on February 27 after billionaire Radhakishan Shivkishan Damani and his brother Gopikishan Damani increased their stake in the company for the second consecutive day.

NIFTY FUTURES



"The last 55 days of price action appears to have chalked out some sort of a down sloping channel, from whose support the Nifty appears to have bounced back from the lows of 11,536 levels. Hence, as long as this index sustains above 11,500 levels, some sideways consolidation with positive bias can be expected as the Nifty is already in oversold levels with a vertical fall from the highs of 12,152 in the last five consecutive sessions

BANK NIFTY FUTURES



The Bank Nifty opened on a negative note and fell towards 29,900 levels in the initial trade. The banking index breached its support of rising trend line and 200-EMA in intraday trades but managed to close above the same amid a decent bounce in the later half of the session. "If the Bank Nifty sustains above 30,300 levels, then we may see a bounce back towards 30,750 and then 31,000 zone. While if it breaks 29,900, then selling pressure may accelerate towards 29,600 and 29,350 levels

INDICES	R1	R2	PIVOTS	S1	S2
NIFTY	11685	11738	11611	11558	11484
BANK NIFTY	30504	30701	30124	29976	29766

PERFORMANCE UPDATES

Date	Cash/ Futures/ option	Contract	Strategy	Entry Level	Target	Stop Loss	Remark
27-FEB-2020	TATAELEXI	CASH	SHORT	934	929-915	945	BOOKED PROF-IT
27-FEB-2020	DHAMPURSUG	CASH	SHORT	175	174.10-173.10	177.20	BOOKED PROF-IT
27-FEB-2020	SRTRANSFIN	FUTURE	SHORT	1243	1237-1230	1259	BOOKED PROF-IT
27-FEB-2020	INDIGO	FUTURE	SHORT	1369	1360-1350	1384	BOOKED PROF-IT
27-FEB-2020	HEROMO-TOCO2100PE	OPTION	LONG	67	72-77	56	BOOKED PROF-IT

DISCLAIMER

www.capitalbuilder.in does not take any compensation of any kind whatsoever from any company that they mention on this website. All data and reports at **www.capitalbuilder.in** are only information services for investors and are not individualized recommendations to buy or sell securities, nor offers to buy or sell securities. The publishers of reports, reviews and analysis under **www.capitalbuilder.in** are not acting in any way to influence the purchase or sale of securities. The information provided is obtained from sources deemed reliable but is not guaranteed as to accuracy or completeness or as to the results obtained by individuals using such information. It is possible at this or some subsequent date, the publishers of reports, reviews and analysis at **www.capitalbuilder.in** may own, buy or sell securities presented. Each user shall be responsible for the risks of their own investment activities and, in no event, shall **www.capitalbuilder.in**, its publishers, employees, owners or investors, be liable for any losses or damages, monetary or otherwise, that result from actions taken after reading the contents of reports, reviews and analysis published on **www.capitalbuilder.in**. The publishers recommend that anyone trading securities should do so with caution and consult with a broker and financial advisor before.

- Capital Builder Financial Services comply with SEBI INVESTMENT ADVISOR GUIDELINES 2013, So please co-operate in providing KYC & Risk Profiling to our employees.
- Dear clients, Capital Builder Financial Services does not claim/give any assured/ guaranteed return, don't trade on personal calls, trade only in Company Research calls. Please beware of fraud calls/sms & misguided advise rumors like JACKPOT, HOT TIPS, SURESHOT kind of messages.
- Capital Builder Financial Services do not ask any client or any person to deposit money in any Employee Or any person's personal bank account details, so never deposit money in any Employee personal account.