



ADDRESS

301-302, SHEKHER CENTRAL ,AB
ROAD,
Indore (M.P.) ,452001.

Email - support@capitalbuilder.in
info@capitalbuilder.in



Capital Builder

We Build Your Capital

- Stock Commodities Advisory • Real Estate
- Equity / Commodity / Currency Broking
- Auto Loans / LAP • Mutual Funds

NIFTY Roundup

Closing Bell: NSE Nifty closed at 12,090.25, posting a jump of 110.60 or 0.94 per cent. Tata Motors and Yes Bank gained 10.68 and 8.58 per cent, respectively. All the sectoral indices ended in green, except Media which closed at 0.77 per cent.

World Indices

INDEX	VALUE	% CHANGE
DOW	29366	+0.43%
S&P 500	3334	+1.13%
NASDAQ	9273	+1.34%
EURO STO	3798	+0.54%
FTSE	7512	+0.40%
NIKKEI	23873	+2.38%

TOP GAINERS

COMPANY	VALUE	CHANGE
EICHERMOT	20530	+5.35%
INDUSINDBK	1331	+4.57%
ZEEL	235	+3.90%
SBIN	321	+3.23%
BAJFINANCE	4664	+3.00%

TOP LOSERS

COMPANY	VALUE	CHANGE
TATAMOTOR	178	-2.86%
CIPLA	438	-2.01%
TITAN	1259	-1.61%
INFY	772	-1.60%
ITC	213	-1.41%

STOCKS 52 WEEK HIGH

COMPANY	VALUE	CHANGE
ABFRL	261	+7.44%
AGCNET	274	+0.91%
ATUL	5029	-1.16%
GRANULES	162	+5.24%

STOCKS 52 WEEK LOW

COMPANY	VALUE	CHANGE
AGROPHOS	18	-4.91%

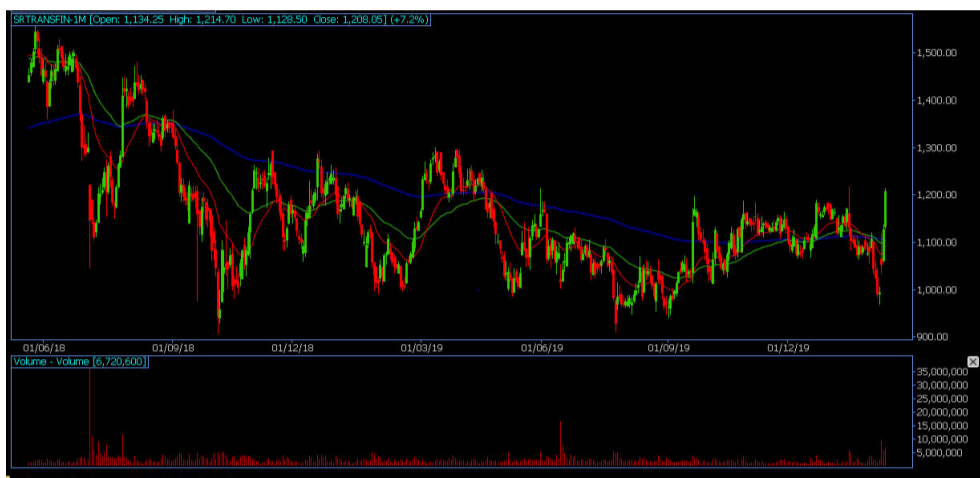
INDIAN INDICES

INDEX	CMP	CHANGE	%CHANGE
SENSEX	41306	+163	+0.40%
NIFTY	12137	+48	+0.40%

STOCK RECOMMENDATIONS [FUTURE]

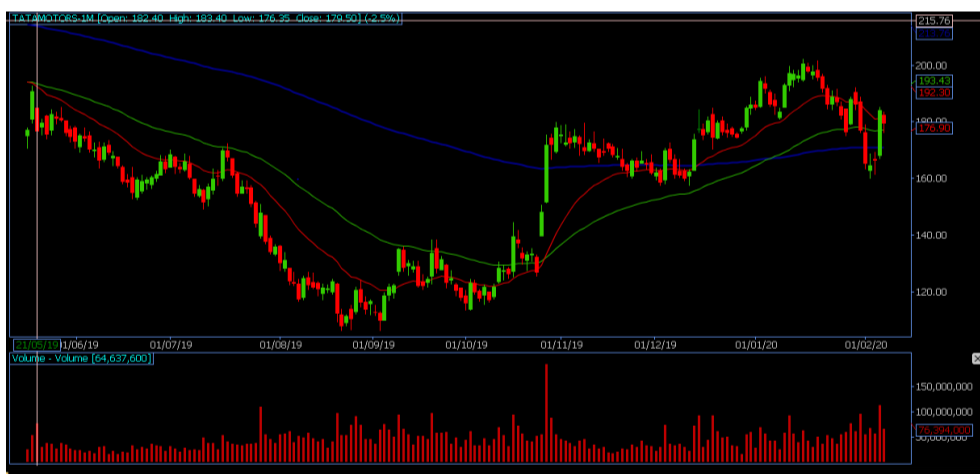
1 SRTRANSFIN

SRTRANSFIN FUTURES is looking BULLISH on charts, we may see UPSIDE movement. We advise BUY ABOVE 1221 with strict stop loss of 1200 for the targets of 1250-1270.



2 TATAMOTOR

TATAMOTOR is looking BULLISH on charts. We advise BUY ABOVE 183 with strict stop loss of 180 for the targets of 186-189.



STOCK RECOMMENDATION [CASH]

1 GODREJPROP

GODREJPROP is looking BULLISH on charts, we may see UPSIDE movement, We advise BUY above 1176 with strict stop loss of 1155 for the targets of 1186-1199.



MACRO NEWS

Shares of banking and financial services companies rallied 1-15 percent in the afternoon on February 6 after the Reserve Bank of India announced several measures to boost credit growth in stressed sectors such as realty, MSMEs and NBFCs.

The share price of housing finance companies rallied 5-15 percent on February 6 after the Monetary Policy Committee (MPC) of Reserve Bank of India (RBI) permitted the extension of project loans for commercial real estate.

The share price of veteran stock market investor Radhakishan Damani-led AVENUE SUPERMART (D-Mart) jumped almost 4 percent in the morning trade on February 6 after the board of directors approved the launch of a qualified institutional placement (QIP) by the promoters.

NIFTY FUTURES



"Albeit Nifty traded with a positive bias throughout the session, the trading range remained somewhat narrower with 75 points, which resulted in an indecisive candle which resembles a Spinning Top. The Nifty may remain sideways and as long as it sustains above 12,084, it may try to drag its feet towards its logical targets of 12,266. However, short-term weakness shall be expected on a close below 12,084 and in such a scenario, the initial target could be towards 11,950.

BANK NIFTY FUTURES



The Bank Nifty index started the session on a positive note and outperformed the benchmark indices. The banking index continued its strong momentum for the fourth time in a row and formed a bullish candle on the daily scale. It witnessed buying interest throughout the session and managed to close above its crucial hurdle of 50-DEMA, up 302.05 points at 31,304. "On Wednesday, we also observed breakout from the Falling Channel on daily chart and price is sustaining well above the same. Now, supports are shifting higher to 31,000–30,800 levels and sustenance above the support zone may lead to extension in ongoing move towards 31,500 then 31,750 levels.

INDICES	R1	R2	PIVOTS	S1	S2
NIFTY	12170	12203	12127	12094	12051
BANK NIFTY	31544	31784	31230	30990	30677

PERFORMANCE UPDATES

Date	Cash/ Futures/ option	Contract	Strategy	Entry Level	Target	Stop Loss	Remark
6-FEB-2020	CANFINHOME	CASH	LONG	495	497-499	491	BOOKED PROF-IT
6-FEB-2020	RBLBANK	CASH	LONG	328	329.50-336	325	BOOKED PROF-IT
6-FEB-2020	JUBLFOOD	FUTURE	SHORT	1911	1902-1870	1933	BOOKED PROF-IT
6-FEB-2020	RELIANCE1460CE	OPTION	LONG	30	33-36	24	BOOKED PROF-IT
6-FEB-2020	AXISBANK740CE	OPTION	LONG	18	19-22	15.70	BOOKED PROF-IT

DISCLAIMER

www.capitalbuilder.in does not take any compensation of any kind whatsoever from any company that they mention on this website. All data and reports at **www.capitalbuilder.in** are only information services for investors and are not individualized recommendations to buy or sell securities, nor offers to buy or sell securities. The publishers of reports, reviews and analysis under **www.capitalbuilder.in** are not acting in any way to influence the purchase or sale of securities. The information provided is obtained from sources deemed reliable but is not guaranteed as to accuracy or completeness or as to the results obtained by individuals using such information. It is possible at this or some subsequent date, the publishers of reports, reviews and analysis at **www.capitalbuilder.in** may own, buy or sell securities presented. Each user shall be responsible for the risks of their own investment activities and, in no event, shall **www.capitalbuilder.in**, its publishers, employees, owners or investors, be liable for any losses or damages, monetary or otherwise, that result from actions taken after reading the contents of reports, reviews and analysis published on **www.capitalbuilder.in**. The publishers recommend that anyone trading securities should do so with caution and consult with a broker and financial advisor before.

- Capital Builder Financial Services comply with SEBI INVESTMENT ADVISOR GUIDELINES 2013, So please co-operate in providing KYC & Risk Profiling to our employees.
- Dear clients, Capital Builder Financial Services does not claim/give any assured/ guaranteed return, don't trade on personal calls, trade only in Company Research calls. Please beware of fraud calls/sms & misguided advise rumors like JACKPOT, HOT TIPS, SURESHOT kind of messages.
- Capital Builder Financial Services do not ask any client or any person to deposit money in any Employee Or any person's personal bank account details, so never deposit money in any Employee personal account.