



**Capital Builder**  
We Build Your Capital

- Stock Commodities Advisory • Real Estate
- Equity / Commodity / Currency Broking
- Auto Loans / LAP • Mutual Funds

## ADDRESS

301-302,SHEKHER CENTRAL ,AB  
ROAD,  
Indore (M.P.) ,452001.

**Email -** [support@capitalbuilder.in](mailto:support@capitalbuilder.in)  
[info@capitalbuilder.in](mailto:info@capitalbuilder.in)

## NIFTY Roundup

Indian indices broke the two day losing streak and ended higher but off day's high on the back of buying seen in the selected metal, FMCG and auto stocks.

At close, the Sensex was up 231.80 points or 0.57% at 41198.66, and the Nifty was up 73.70 points or 0.61% at 12129.50. About 1268 shares have advanced, 1201 shares declined, and 164 shares are unchanged.

Tata Motors, Bajaj Finance, Bharti Infratel, Nestle and Bajaj Finserv were among major gainers on the Nifty, while losers were Eicher Motors, TCS, Yes Bank, Dr Reddy's Labs and HDFC.

## World Indices

INDEX	VALUE	% CHANGE
DOW	28829	+0.29%
S&P 500	3276	+1.01%
NASDAQ	9269	+1.43%
EURO STO	3730	+0.29%
FTSE	7490	+0.13%
NIKKEI	23379	+0.71%

## TOP GAINERS

COMPANY	VALUE	CHANGE
TATAMOTOR	188.10	+6.81%
BAJFINANCE	4426	+5.06%
INFRATEL	245.55	+3.35%
BAJAJFINSV	9924	+3.04%
EICHERMOT	15858	+2.86%

## TOP LOSERS

COMPANY	VALUE	CHANGE
EICHERMOT	20136	-4.84%
YESBANK	41	-1.44%
DRREDDY	3145	-1.38%
TCS	2154	-1.36%
HDFC	2406	-1.04%

## STOCKS 52 WEEK HIGH

COMPANY	VALUE	CHANGE
AARTIND	999	+10.71%
ADANIENT	238.35	0.80%
AMBER	1585	4.96%
GLAXO	1748	0.50%

## STOCKS 52 WEEK LOW

COMPANY	VALUE	CHANGE
CANDC	2	4.76%

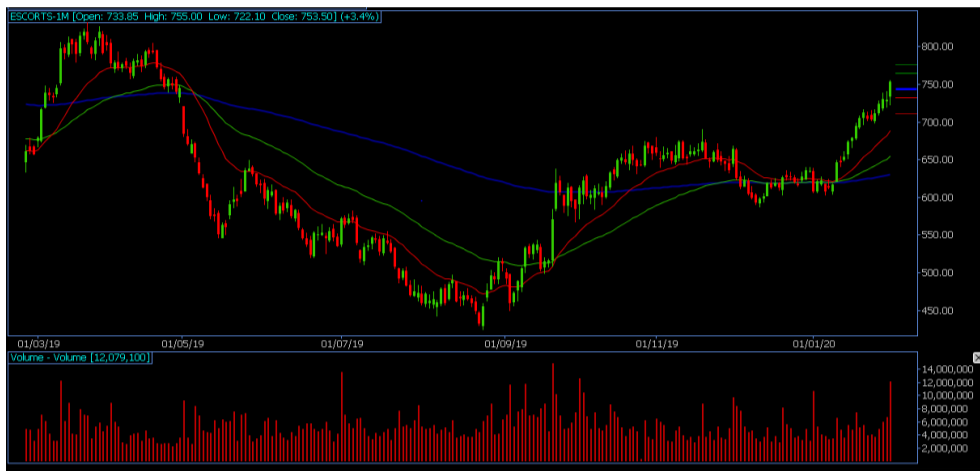
## INDIAN INDICES

INDEX	CMP	CHANGE	%CHANGE
SENSEX	41198	+231	+0.57%
NIFTY	12129	+73	+0.61%

### STOCK RECOMMENDATIONS [FUTURE]

#### 1 ESCOT

ESCORT FUTURES is looking BULLISH on charts, we may see UPSIDE movement. We advise BUY ABOVE 753 with strict stop loss of 745 for the targets of 757-761.



### STOCK RECOMMENDATION [CASH]

#### 1 VIPIND

VIPIND is looking BULLISH on charts, we may see UPSIDE movement, We advise BUY above 475 with strict stop loss of 470 for the targets of 478-482.



#### 2 SUNTV

SUNTV is looking BEARISH on charts. We advise SELL BELOW 490 with strict stop loss of 496 for the targets of 484-475.



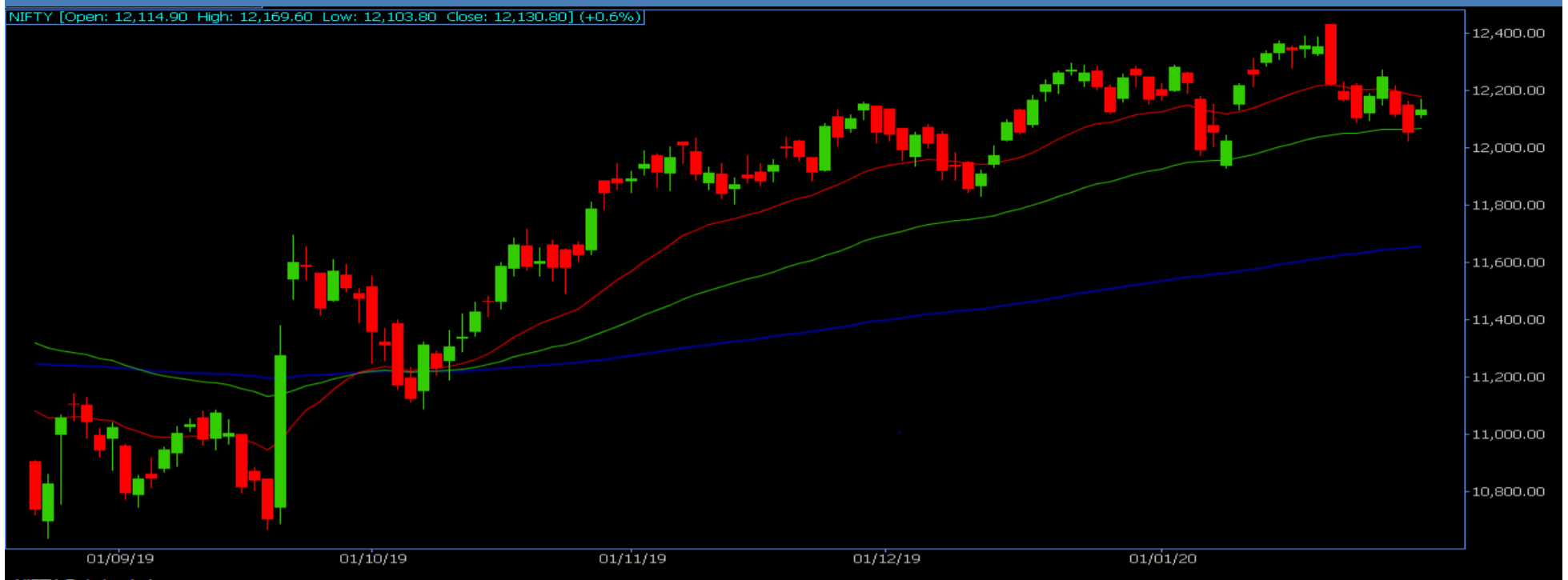
### MACRO NEWS

Val tech wabag share price rose 4 percent intraday on January 29 after the company secured orders worth Rs 760 crore in India, Switzerland and Singapore.

Shares of BAJAJ FINANCE rallied 4 percent to hit an intraday record high of Rs 4,383.05 on January 29 after EARNING BEAT ANALYST EXPECTATION though there was a dip in provision coverage ratio.

Share price of TATA COFFEE gained almost 5 percent intraday on January 29, hitting new 52-week high of Rs 107.20 per share after the company's profit for the third quarter jumped 121 percent at Rs 42 crore compared to Rs 22 crore for the corresponding period in the previous year.

## NIFTY FUTURES



"Despite witnessing a strong opening, Nifty failed to build on to its opening gains which depicted a weak candle structure with a long upper shadow with a small bullish candle body which resembles an Inverted Hammer "Purely if we go by technical levels then in next trading session if Nifty manages to sustain above 12,170 levels then it should head towards 12,272 levels. Similarly, on the downside 12,024 shall remain critical support breach of which shall drag down the indices towards 11,900."

## BANK NIFTY FUTURES



"Index is stuck in a wider trading range between 30,600 to 31,400 zone for past seven trading days as dips are being bought into while supply pressure was seen at higher band. Now it needs to continue hold above 30,800 to witness a bounce towards 31,100 then 31,250 levels. On the flip side, a sustainable move below 30,800 may drag the banking index towards its next support of 30,500 then 30,250 levels

INDICES	R1	R2	PIVOTS	S1	S2
NIFTY	12164	12200	12134	12099	12068
BANK NIFTY	31178	31027	30931	30780	30684

## PERFORMANCE UPDATES

Date	Cash/ Futures/ option	Contract	Strategy	Entry Level	Target	Stop Loss	Remark
29-JAN-2020	AFFLE	CASH	LONG	1713	1721-1730	1994	BOOKED PROF-IT
29-JAN-2020	UJJIVAN	FUTURE	LONG	377	379.30-381.60	372	BOOKED PROF-IT
29-JAN-2020	INFRATEL	FUTURE	LONG	244	245.70	241.50	BOOKED PROF-IT
29-JAN-2020	RELIANCE1480CE	OPTION	SHORT	8	6.40-5	11	BOOKED PROF-IT
29-JAN-2020	AARTIIND	CASH	LONG	921	928-940	910	BOOKED PROF-IT

## DISCLAIMER

**www.capitalbuilder.in** does not take any compensation of any kind whatsoever from any company that they mention on this website. All data and reports at **www.capitalbuilder.in** are only information services for investors and are not individualized recommendations to buy or sell securities, nor offers to buy or sell securities. The publishers of reports, reviews and analysis under **www.capitalbuilder.in** are not acting in any way to influence the purchase or sale of securities. The information provided is obtained from sources deemed reliable but is not guaranteed as to accuracy or completeness or as to the results obtained by individuals using such information. It is possible at this or some subsequent date, the publishers of reports, reviews and analysis at **www.capitalbuilder.in** may own, buy or sell securities presented. Each user shall be responsible for the risks of their own investment activities and, in no event, shall **www.capitalbuilder.in**, its publishers, employees, owners or investors, be liable for any losses or damages, monetary or otherwise, that result from actions taken after reading the contents of reports, reviews and analysis published on **www.capitalbuilder.in**. The publishers recommend that anyone trading securities should do so with caution and consult with a broker and financial advisor before.

- Capital Builder Financial Services comply with SEBI INVESTMENT ADVISOR GUIDELINES 2013, So please co-operate in providing KYC & Risk Profiling to our employees.
- Dear clients, Capital Builder Financial Services does not claim/give any assured/ guaranteed return, don't trade on personal calls, trade only in Company Research calls. Please beware of fraud calls/sms & misguided advise rumors like JACKPOT, HOT TIPS, SURESHOT kind of messages.
- Capital Builder Financial Services do not ask any client or any person to deposit money in any Employee Or any person's personal bank account details, so never deposit money in any Employee personal account.