



Capital Builder

We Build Your Capital

- Stock Commodities Advisory • Real Estate
- Equity / Commodity / Currency Broking
- Auto Loans / LAP • Mutual Funds

ADDRESS

301-302,SHEKHER CENTRAL ,AB
ROAD,
Indore (M.P.) ,452001.

Email - support@capitalbuilder.in
info@capitalbuilder.in

NIFTY Roundup

The BSE Sensex was down 458.07 points, or 1.10 percent, at 41,155.12 and the Nifty50 fell 129.30 points, or 1.06 percent, to 12,119.00, but the broader markets outperformed benchmarks with Nifty Midcap index declining 0.4 percent and Smallcap index flat.

World Indices

INDEX	VALUE	% CHANGE
DOW	29484	-1.55%
S&P 500	3295	-0.90%
NASDAQ	9314	-0.93%
EURO STO	3697	-2.16%
FTSE	7411	-2.30%
NIKKEI	23343	-2.06%

TOP GAINERS

COMPANY	VALUE	CHANGE
DRREDDY	3200	+5.56%
M&M	578.35	+1.87%
CIPLA	464	+1.17%
ULTRACEMCO	4686	+0.93%
EICHERMOT	21091	+0.77%

TOP LOSERS

COMPANY	VALUE	CHANGE
VEDL	148	-4.84%
TATASTEEL	460	-4.73%
JSWSTEEL	260	-4.25%
INDUSINDBK	1275	-3.12%
HINDALCO	200	-2.63%

STOCKS 52 WEEK HIGH

COMPANY	VALUE	CHANGE
ADANIENT	236	+0.41%
AMARAJBAT	813.85	-0.54%
AMBER	1410	2.73%
DABUR	505.85	-1.58%

STOCKS 52 WEEK LOW

COMPANY	VALUE	CHANGE
8KMILES	27.95	4.94%

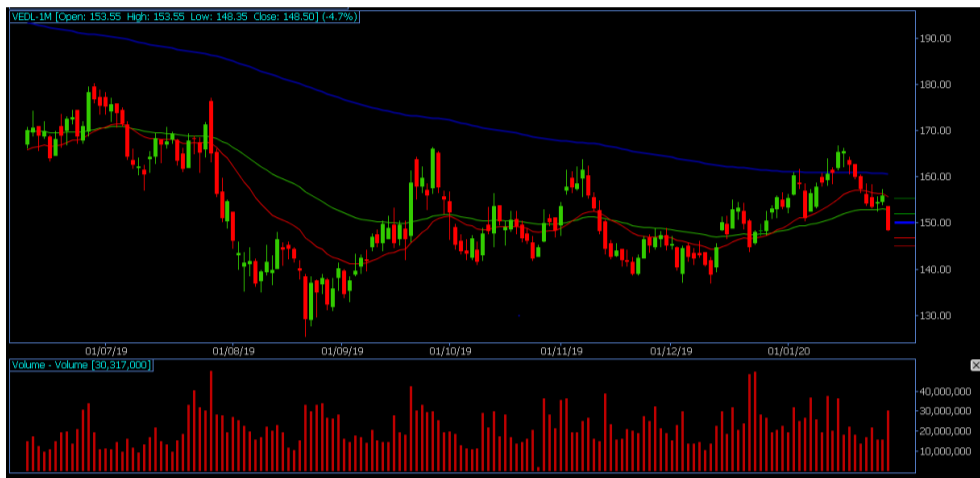
INDIAN INDICES

INDEX	CMP	CHANGE	%CHANGE
SENSEX	41155	-458	-1.10%
NIFTY	12119	-129	-1.06%

STOCK RECOMMENDATIONS [FUTURE]

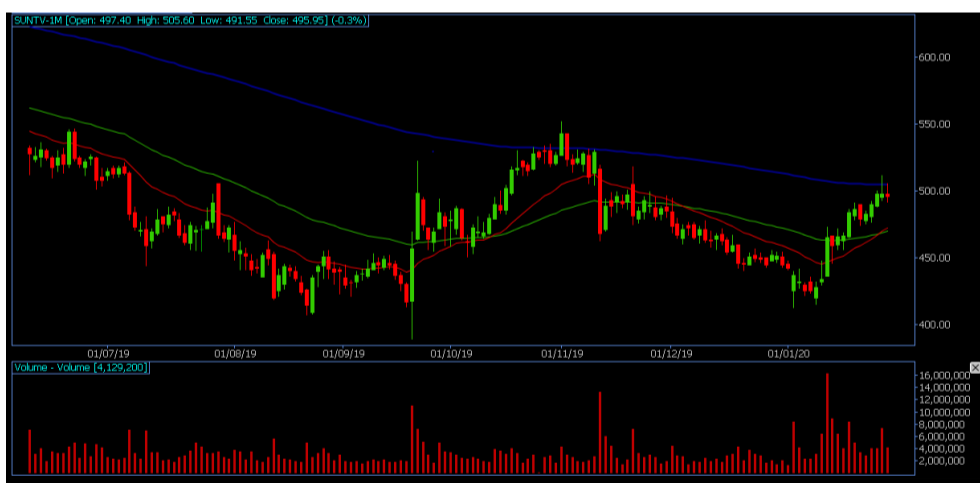
1 VEDL

VEDL FUTURES is looking BEARISH on charts, we may see DOWNSIDE movement. We advise SELL BELOW 148 with strict stop loss of 150 for the targets of 146-144.



2 SUNTV

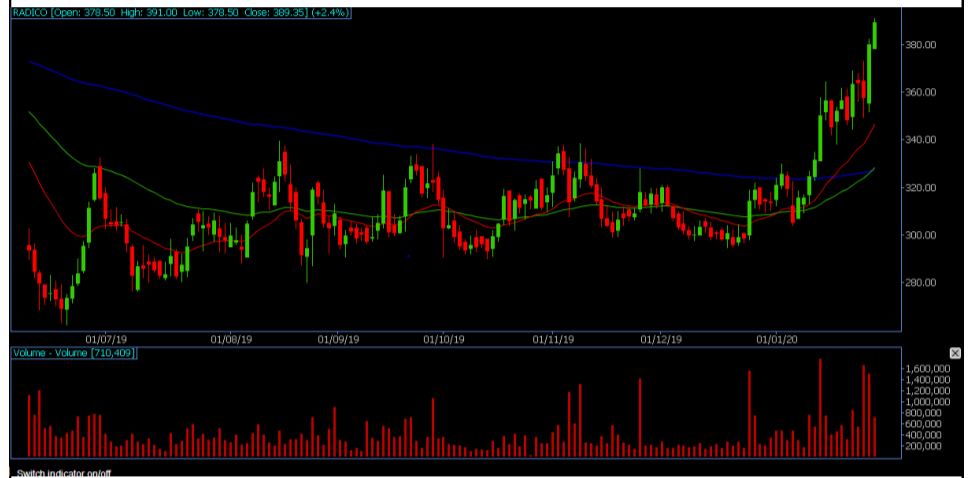
SUNTV is looking BEARISH on charts. We advise SELL BELOW 490 with strict stop loss of 496 for the targets of 484-475.



STOCK RECOMMENDATION [CASH]

1 RADICO

RADICO is looking BULLISH on charts, we may see UPSIDE movement, We advise BUY above 390 with strict stop loss of 384 for the targets of 393-397.



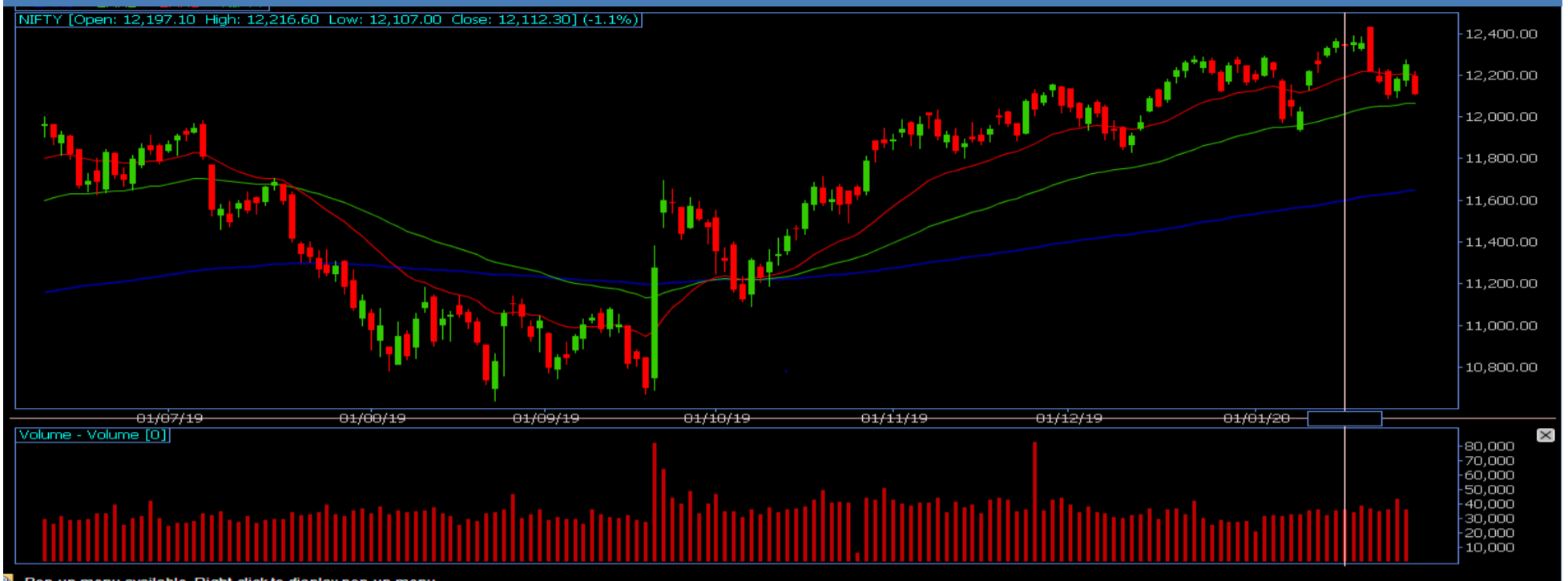
MACRO NEWS

Gold Update: Gold inched lower on Friday as investors opted for riskier assets after the World Health Organisation stopped short of declaring the China virus outbreak a global emergency, but the precious metal was on track to post a weekly gain.

HOUSING DEVELOPMENT FINANCE CORPORATION (HDFC), the country's largest housing finance company, on January 27 registered a whopping 296 percent year-on-year growth in standalone profit due to fair value gain after the merger of Gruh Finance with Bandhan Bank.

The share price of WOCKHARDT zoomed over 14 percent intraday on January 27 after the pharmaceutical and biotechnology company reported a consolidated profit of Rs 9.6 crore against loss of Rs 71.1 crore YoY.

NIFTY FUTURES



"Bears dominated the session throughout however, broader markets were not as bad. As earlier mentioned 12,100 zone remains crucial for the bulls to hold as a decisive breach below the support zone would provide fresh momentum on the downside and in that event, index can test 11,800 support zone on the downside. Currently Nifty is in a range between 12,100-12,450 zone

BANK NIFTY FUTURES



The Bank Nifty opened negative and extended weakness towards 30,800. It closed 1.29 percent lower at 30,837.40 and formed a bearish candle on the daily scale, as it wiped out most of the gains of the previous two sessions. "The Bank Nifty closed near its crucial supports of 30,800 levels and needs to hold above the same to witness a bounce towards 31,250 levels, else below the same it could drag it towards its next support of 30,500 and even lower levels

INDICES	R1	R2	PIVOTS	S1	S2
NIFTY	12188	12257	12147	12078	12037
BANK NIFTY	31106	31376	30957	30688	30539

PERFORMANCE UPDATES

Date	Cash/ Futures/ option	Contract	Strategy	Entry Level	Target	Stop Loss	Remark
27-JAN-2020	CENTURYTEX	CASH	LONG	741.50	745-749	734	BOOKED PROF-IT
27-JAN-2020	UPL	FUTURE	SHORT	539	535.50-532	543	BOOKED PROF-IT
27-JAN-2020	IGL500CE	OPTION	LONG	11	12-13	9	BOOKED PROF-IT
27-JAN-2020	RADICO	CASH	LONG	386.50	389-393	381	BOOKED PROF-IT
27-JAN-2020	ESCORT720CE	OPTION	LONG	20	22-26	16.50	BOOKED PROF-IT

DISCLAIMER

www.capitalbuilder.in does not take any compensation of any kind whatsoever from any company that they mention on this website. All data and reports at **www.capitalbuilder.in** are only information services for investors and are not individualized recommendations to buy or sell securities, nor offers to buy or sell securities. The publishers of reports, reviews and analysis under **www.capitalbuilder.in** are not acting in any way to influence the purchase or sale of securities. The information provided is obtained from sources deemed reliable but is not guaranteed as to accuracy or completeness or as to the results obtained by individuals using such information. It is possible at this or some subsequent date, the publishers of reports, reviews and analysis at **www.capitalbuilder.in** may own, buy or sell securities presented. Each user shall be responsible for the risks of their own investment activities and, in no event, shall **www.capitalbuilder.in**, its publishers, employees, owners or investors, be liable for any losses or damages, monetary or otherwise, that result from actions taken after reading the contents of reports, reviews and analysis published on **www.capitalbuilder.in**. The publishers recommend that anyone trading securities should do so with caution and consult with a broker and financial advisor before.

- Capital Builder Financial Services comply with SEBI INVESTMENT ADVISOR GUIDELINES 2013, So please co-operate in providing KYC & Risk Profiling to our employees.
- Dear clients, Capital Builder Financial Services does not claim/give any assured/ guaranteed return, don't trade on personal calls, trade only in Company Research calls. Please beware of fraud calls/sms & misguided advise rumors like JACKPOT, HOT TIPS, SURESHOT kind of messages.
- Capital Builder Financial Services do not ask any client or any person to deposit money in any Employee Or any person's personal bank account details, so never deposit money in any Employee personal account.