



## Capital Builder

We Build Your Capital

- Stock Commodities Advisory
- Real Estate
- Equity / Commodity / Currency Broking
- Auto Loans / LAP
- Mutual Funds

### ADDRESS

301-302,SHEKHER CENTRAL ,AB  
ROAD,  
Indore (M.P.) ,452001.

**Email -** [support@capitalbuilder.in](mailto:support@capitalbuilder.in)  
[info@capitalbuilder.in](mailto:info@capitalbuilder.in)



## NIFTY Roundup

Sensex ends 247.55 points lower or 0.61 percent at 40239.88 while the Nifty shed 80.70 points or 0.68 percent at 11856.80. Bajaj Finance, Eicher Motors and Cipla are the top gainers while YES Bank, Zee Entertainment and Power Grid are the top losers. The most active stocks include YES Bank, State Bank of India and Indiabulls Housing Finance.

### World Indices

INDEX	VALUE	% CHANGE
DOW	27795	-0.38%
S&P 500	3122	-0.39%
NASDAQ	8566	+0.54%
EURO STO	3629	-1.15%
FTSE	7160	-1.01%
NIKKEI	23410	-0.09%

### TOP GAINER

COMPANY	VALUE	CHANGE
BAJFINANCE	3994	+1.26%
HINDUNILVR	2030	+1.10%
CIPLA	452.80	+1.09%
EITCHRMOT	21210	+1.01%
BHARTIARTL	449.65	+0.85%

### TOP LOSERS

COMPANY	VALUE	CHANGE
JSWSTEEL	250	-3.52%
COALINDIA	196	-3.38%
BHARTIARTL	449	-2.65%
TATASTEEL	399	-2.52%
INDUSINDBK	1508	-2.30%

### STOCKS 52 WEEK HIGH

COMPANY	VALUE	CHANGE
AAVAS	1850	-0.16%
BFUTILITIES	361	-6.13%
CRISIL	1699	2.11%
MASFIN	845	3.21%

### STOCKS 52 WEEK LOW

COMPANY	VALUE	CHANGE
ALBK	20.30	-4.64%

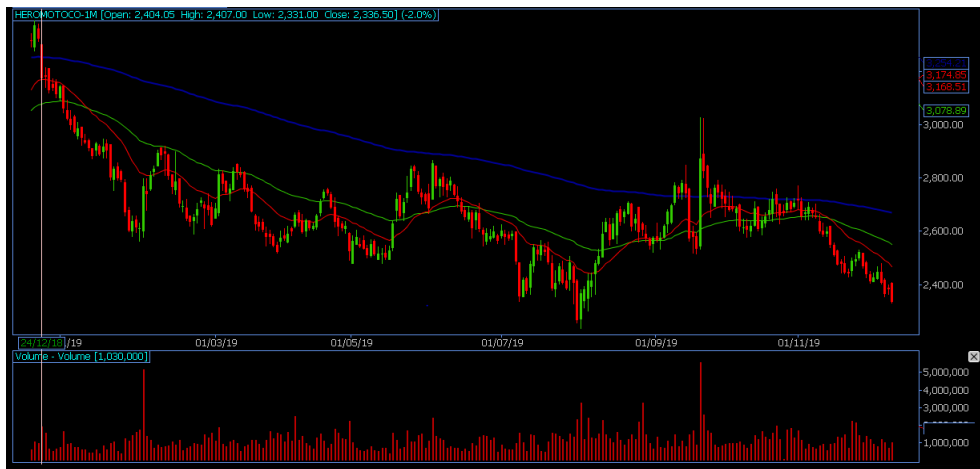
### INDIAN INDICES

INDEX	CMP	CHANGE	%CHANGE
SENSEX	40239	-247	-0.61%
NIFTY	11856	-80.70	-0.68%

### STOCK RECOMMENDATIONS [FUTURE]

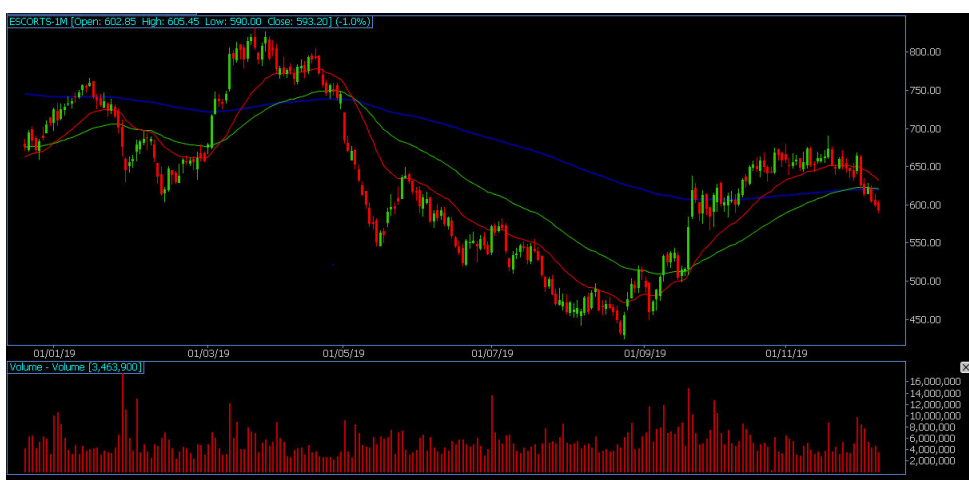
#### 1 HEROMOTOCO

HEROMOTOCO FUTURES is looking BEARISH on charts, we may see DOWNSIDE movement. We advise SELL BELOW 2340 with strict stop loss of 2360 for the targets of 2320-2298.



#### 2 ESCORT

ESCORT is looking BEARISH on charts. We advise 590 with strict stop loss of 597 for the targets of 585-580.



### STOCK RECOMMENDATION [CASH]

#### 1 JBCHEPHARM

JBCHEPHARM is looking BULLISH on charts, we may see UPSIDE movement, We advise BUY above 425 with strict stop loss of 415 for the targets of 435-445.



### MACRO NEWS

STETE BANK OF INDIA (SBI) on December 10 reported bad loan divergence of Rs 11,932 crore for the last financial year, the country's largest lender said in a notification to exchanges.

Shares of LARSEN & TURBO fell nearly a percent intraday on December 10 after Motilal Oswal reduced its target price by 8 percent as it expects lower order inflow and revenue growth.

Raymond Re-appoints Ishwar Das Agarwal and Pradeep Guha as an independent director for 2 years Appoints Ashish Kapadia as an additional director (Independent) for 5 years



After opening higher at 11,950.50, the Nifty immediately slipped and extended selling pressure as the day progressed. It touched an intraday low of 11,844.70 in late trade and closed 80.70 points lower at 11,856.80. "In the next session, if the index trades below 11,854 levels for more than 30 minutes, then it's ideal destination shall be the test of 50-day simple moving average whose value for next session is placed around 11,749, where some buying interest can be expected

## BANK NIFTY FUTURES



The banking index moved within the territory of the previous day's trading range and thus formed an Inside Bar pattern on the daily scale. The index closed 156.40 points lower at 31,160.30.

"It closed below 20-day EMA on the daily chart and till the time the Bank Nifty sustains below its resistance zone of 31,500–31,600, a corrective move towards 31,000–30,800 levels cannot be ruled out

INDICES	R1	R2	PIVOTS	S1	S2
NIFTY	11925	11993	11884	11816	11776
BANK NIFTY	31340	31519	31233	31053	30946

## PERFORMANCE UPDATES

Date	Cash/ Futures/ option	Contract	Strategy	Entry Level	Target	Stop Loss	Remark
10-DEC-2019	COALINDA	FUTURE	SHORT	188.80	187.80-186.80	190.80	BOOKED PROF-IT
10-DEC-2019	BALRAMCHIN	CASH	LONG	164.50	165.50-167	163.50	BOOKED PROF-IT
10-DEC-2019	RBLBANK	FUTURE	SHORT	325	323-320	329	BOOKED PROF-IT
10-DEC-2019	JBCHEPHARM	CASH	LONG	428	431-434	417	BOOKED PROF-IT
10-DEC-2019	TCS2020PE	OPTION	LONG	41	46-51	27	BOOKED PROF-IT

## DISCLAIMER

**www.capitalbuilder.in** does not take any compensation of any kind whatsoever from any company that they mention on this website. All data and reports at **www.capitalbuilder.in** are only information services for investors and are not individualized recommendations to buy or sell securities, nor offers to buy or sell securities. The publishers of reports, reviews and analysis under **www.capitalbuilder.in** are not acting in any way to influence the purchase or sale of securities. The information provided is obtained from sources deemed reliable but is not guaranteed as to accuracy or completeness or as to the results obtained by individuals using such information. It is possible at this or some subsequent date, the publishers of reports, reviews and analysis at **www.capitalbuilder.in** may own, buy or sell securities presented. Each user shall be responsible for the risks of their own investment activities and, in no event, shall **www.capitalbuilder.in**, its publishers, employees, owners or investors, be liable for any losses or damages, monetary or otherwise, that result from actions taken after reading the contents of reports, reviews and analysis published on **www.capitalbuilder.in**. The publishers recommend that anyone trading securities should do so with caution and consult with a broker and financial advisor before.

- Capital Builder Financial Services comply with SEBI INVESTMENT ADVISOR GUIDELINES 2013, So please co-operate in providing KYC & Risk Profiling to our employees.
- Dear clients, Capital Builder Financial Services does not claim/give any assured/ guaranteed return, don't trade on personal calls, trade only in Company Research calls. Please beware of fraud calls/sms & misguided advise rumors like JACKPOT, HOT TIPS, SURESHOT kind of messages.
- Capital Builder Financial Services do not ask any client or any person to deposit money in any Employee Or any person's personal bank account details, so never deposit money in any Employee personal account.