



Capital Builder

We Build Your Capital

- Stock Commodities Advisory
- Real Estate
- Equity / Commodity / Currency Broking
- Auto Loans / LAP
- Mutual Funds

ADDRESS

301-302,SHEKHER CENTRAL ,AB
ROAD,
Indore (M.P.) ,452001.

Email - support@capitalbuilder.in
info@capitalbuilder.in

NIFTY Roundup

A big day for Indian markets as both the Sensex and the Nifty hit fresh record highs on November 26 before witnessing mild profit-taking to end marginally lower.

The final tally on D-Street: the Sensex hit a record high of 41,120 before closing 67 points lower at 40,821, while the Nifty surged to a life high of 12,132 before closing 36 points lower at 12,037.

In terms of sectors, action was seen in the Bankex, FMCG stocks, while profit-taking was seen in the telecom, IT, capital goods, and auto stocks.

World Indices

INDEX	VALUE	% CHANGE
DOW	28048	+0.03%
S&P 500	3133	+0.75%
NASDAQ	8632	+1.32%
EURO STO	3702	-0.13%
FTSE	7400	+0.06%
NIKKEI	23373	+0.35%

TOP GAINER

COMPANY	VALUE	CHANGE
ICICIBANK	513	+3.05%
GAIL	125	+2.46%
DRREDDY	2975	+1.86%
INDUSINDBK	1519.75	+1.53%
TATASTEEL	425.30	+1.38%

TOP LOSERS

COMPANY	VALUE	CHANGE
ZEEL	318.55	-7.34%
INFRATEL	233.85	-6.52%
GRASIM	787	-4.36%
BHARTIARTL	433.20	-4.03%
JSWSTEEL	253.10	-2.71%

STOCKS 52 WEEK HIGH

COMPANY	VALUE	CHANGE
AAVAS	1838	6.32%
ADSL	19.50	3.32%
CHALET	379.45	-1.81%
JUMPNET	76	-3.54%

STOCKS 52 WEEK LOW

COMPANY	VALUE	CHANGE
BANG	15.15	+4.43%

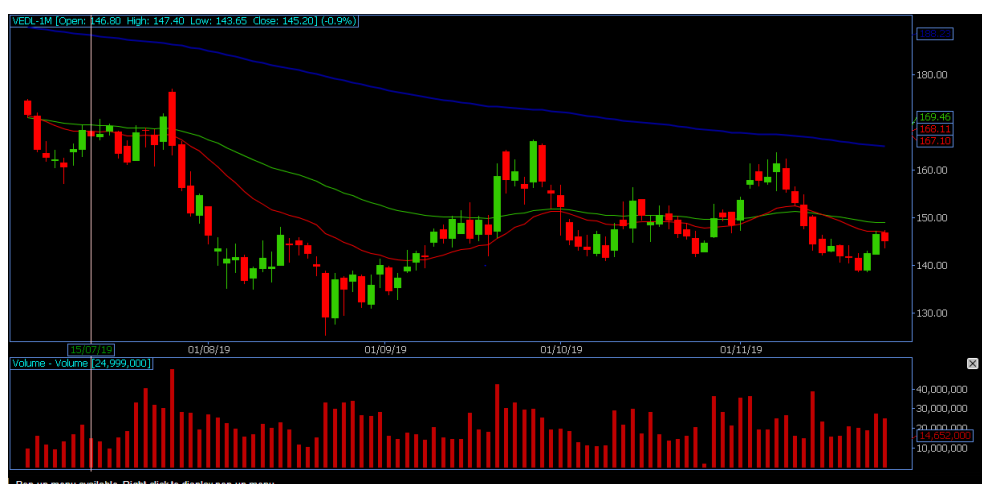
INDIAN INDICES

INDEX	CMP	CHANGE	%CHANGE
SENSEX	40821.30	-67.93	-0.17%
NIFTY	12037.70	-36	-0.30%

STOCK RECOMMENDATIONS [FUTURE]

1 VEDL

VEDL FUTURES is looking BEARISH on charts, we may see DOWNSIDE movement. We advise SELL BELOW ABOVE 144 with strict stop loss of 147 for the targets of 142-139.



STOCK RECOMMENDATION [CASH]

1 MCX

MCX is looking BULLISH on charts, we may see UPSIDE movement, We advise BUY above 1200 with strict stop loss of 1180 for the targets of 1218-1232.



2 EXIDEIND

EXIDEIND is looking BEARISH on charts. We advise SELL BELOW 193 with strict stop loss of 196 for the targets of 191-189.



MACRO NEWS

Shares of Gujarat gas rose more than seven percent intraday on November 26 after Macquarie maintained its outperform rating. The research house also raised its target price on the counter to Rs 240 per share from Rs 210 earlier.

Shares of larsen&toubro fell more than a percent intraday on November 26 after global brokerage house Credit Suisse downgraded the stock to neutral from outperform earlier, citing slowing orders.

Tejas network share price rose 10 percent intraday on November 26 after company has signed a memorandum of understanding (MoU) with bharat electronics (BEL).

NIFTY FUTURES



The Nifty50 crossed its earlier record high in opening trade itself as it started the day at 12,110.20 and hit an intraday high of 12,132.45, the all-time high, but profit booking pulled the index lower in the second half to day's low of 12,006.35. It closed at 12,037.70, down 36.10 points."It appears to be the day of consolidation on the bourses as profit booking appears to have kicked in from the uncharted territories as Nifty registered a new landmark with an intraday high of 12,132 levels. However, lack of follow-through to strong price action of last Monday shall remain a slightly worrying sign

BANK NIFTY FUTURES



Nifty Bank was seen outperforming Nifty for the major part of the day. The index witnessed a strong dip but was seen bouncing after retesting the breakout zone of 31,450 levels and hit an intraday record high of 31,850.35.

The index ended at record closing high of 31,718.35, up 0.51 percent and formed Doji candle on daily charts as it closed near its opening levels.

INDICES	R1	R2	PIVOTS	S1	S2
NIFTY	12111	12185	12058	11985	11932
BANK NIFTY	31890	32062	31678	31505	31293

PERFORMANCE UPDATES

Date	Cash/ Futures/ option	Contract	Strategy	Entry Level	Target	Stop Loss	Remark
26-NOV-2019	DELTACORP	CASH	LONG	205	206-210	202.90	BOOKED PROF-IT
26-NOV-2019	BIOCON	FUTURE	LONG	268	269.50-271	265	BOOKED PROF-IT
26-NOV-2019	JINDALSTEEL	FUTURE	LONG	156	156.90-158	154	BOOKED PROF-IT
26-NOV-2019	TATASTEEL420CE	OPTION	LONG	9.2	9.70-11	8.10	BOOKED PROF-IT
26-NOV-2019	IIFL	LONG	LONG	159.50	161-163	156.40	BOOKED PROF-IT

DISCLAIMER

www.capitalbuilder.in does not take any compensation of any kind whatsoever from any company that they mention on this website. All data and reports at **www.capitalbuilder.in** are only information services for investors and are not individualized recommendations to buy or sell securities, nor offers to buy or sell securities. The publishers of reports, reviews and analysis under **www.capitalbuilder.in** are not acting in any way to influence the purchase or sale of securities. The information provided is obtained from sources deemed reliable but is not guaranteed as to accuracy or completeness or as to the results obtained by individuals using such information. It is possible at this or some subsequent date, the publishers of reports, reviews and analysis at **www.capitalbuilder.in** may own, buy or sell securities presented. Each user shall be responsible for the risks of their own investment activities and, in no event, shall **www.capitalbuilder.in**, its publishers, employees, owners or investors, be liable for any losses or damages, monetary or otherwise, that result from actions taken after reading the contents of reports, reviews and analysis published on **www.capitalbuilder.in**. The publishers recommend that anyone trading securities should do so with caution and consult with a broker and financial advisor before.

- Capital Builder Financial Services comply with SEBI INVESTMENT ADVISOR GUIDELINES 2013, So please co-operate in providing KYC & Risk Profiling to our employees.
- Dear clients, Capital Builder Financial Services does not claim/give any assured/ guaranteed return, don't trade on personal calls, trade only in Company Research calls. Please beware of fraud calls/sms & misguided advise rumors like JACKPOT, HOT TIPS, SURESHOT kind of messages.
- Capital Builder Financial Services do not ask any client or any person to deposit money in any Employee Or any person's personal bank account details, so never deposit money in any Employee personal account.