



## Capital Builder

We Build Your Capital

- Stock Commodities Advisory
- Real Estate
- Equity / Commodity / Currency Broking
- Auto Loans / LAP
- Mutual Funds

### ADDRESS

301-302,SHEKHER CENTRAL ,AB  
ROAD,  
Indore (M.P.) ,452001.

**Email -** [support@capitalbuilder.in](mailto:support@capitalbuilder.in)  
[info@capitalbuilder.in](mailto:info@capitalbuilder.in)



## NIFTY Roundup

In the volatile session on November 18 the benchmark indices ended marginally lower with Nifty failed to hold above 11,900.

At close, the Sensex was down 72.50 points at 40284.19, while Nifty was down 11 points at 11,884.50.

Bharti Airtel, Tata Steel, UPL, Hindalco Industries and BPCL were among major gainers on the Nifty, while losers were Yes Bank, M&M, Bajaj Auto, Britannia Industries and Hero MotoCorp.

Among sectors, metal, pharma, PSU bank, infra witnessed buying, while auto and FMCG was down.

### World Indices

INDEX	VALUE	% CHANGE
DOW	28029	+0.27%
S&P 500	3120	+0.77%
NASDAQ	8047	-0.63%
EURO STO	3707	-0.10%
FTSE	7318	+0.21%
NIKKEI	23416	+0.49%

### TOP GAINER

COMPANY	VALUE	CHANGE
BHARTARTL	411.20	+4.62%
TATASTEEL	411.50	+4.41%
UPL	550	+3.71%
HINDACO	194	+3.33%
BPCL	520	+2.75%

### TOP LOSERS

COMPANY	VALUE	CHANGE
BAJAJAUTO	3152	-1.29%
YESBANK	65.75	-4.29%
BRITANNIA	3142	-1.67%
M&M	573	-1.66%
HEROMOTOCO	2503	-1.55%

### STOCKS 52 WEEK HIGH

COMPANY	VALUE	CHANGE
ICICIGI	1399.75	-2.15%
MUTHOOTFIN	737.25	+1.67%
DLF	218.45	+2.24%
IPCALAB	1175	+5.41%

### STOCKS 52 WEEK LOW

COMPANY	VALUE	CHANGE
APOLLOPIPE	354.95	+4.79%

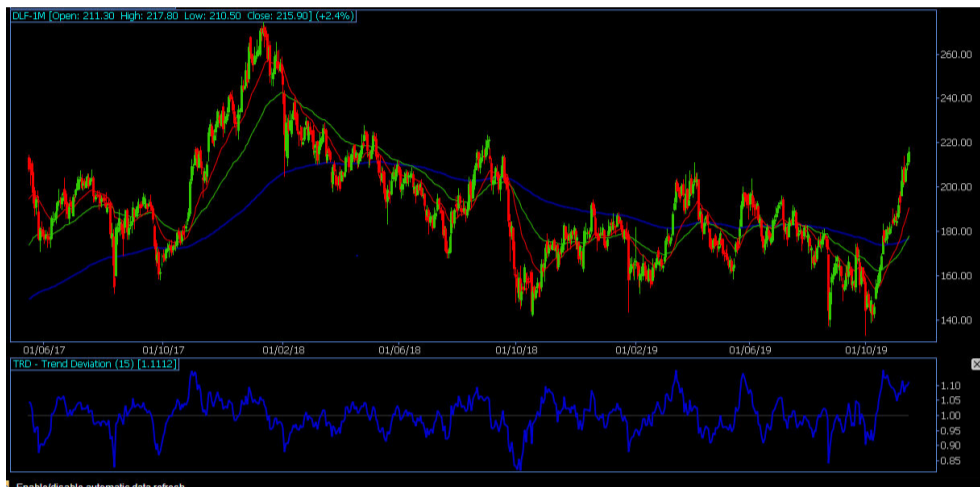
### INDIAN INDICES

INDEX	CMP	CHANGE	%CHANGE
SENSEX	40284.19	-72.50	-0.18%
NIFTY	11884.50	-10.95	-0.09%

### STOCK RECOMMENDATIONS [FUTURE]

#### 1 DLF

DLF FUTURES is looking BULLISH on charts, we may see UPSIDE movement. We advise BUY ABOVE 216 with strict stop loss of 213 for the targets of 218-221.



### STOCK RECOMMENDATION [CASH]

#### 1 MCX

MCX is looking BULLISH on charts, we may see UPSIDE movement, We advise BUY above 1190 with strict stop loss of 1170 for the targets of 1210-1230.



#### 2 EXIDEIND

EXIDEIND is looking BULLISH on charts. We advise BUY ABOVE 190 with strict stop loss of 188 for the targets of 192-195.



### MACRO NEWS

Shares of cadilahealthcare jumped over four percent intraday on November 18 after Zydus Cadila received tentative approval from the US Food and Drug Administration (USFDA) to market Apremilast tablets in multiple strengths (10mg, 20mg and 30mg).

Shares of general insurance corporation of india fell 4 percent intraday on November 18 after HSBC downgraded the stock to hold citing limited upside from current levels.

Wockhardt share price rallied 13 percent intraday on November 18 after sources told Moneycontrol that domestic strategic suitors and global private equity firms are in the race to buy select division of company. These divisions have been put on the block to reduce the firm's debt burden.

## NIFTY FUTURES



The Nifty opened higher at 11,915.15 and moved in a narrow range of 85 points. The index touched an intraday high of 11,946.20 in the early trade, but immediately wiped the gains to remain rangebound. It hit the day's low of 11,867.60 in the afternoon and closed 11 points lower at 11,884.50. "If the index breaks 13 DEMA, then breach of recent corrective swing low of 11,802 levels looks inevitable and correction should further get extended towards 11,700 levels. Meanwhile, upsides shall remain capped around 11,973 and strength in the index shall not be expected unless the Nifty closes above this resistance point,

## BANK NIFTY FUTURES



The index formed a Doji candle on the daily scale, while it has been forming higher highs - higher lows for the last five weeks.

"Price pattern suggests that major trend is positive but at the same time, pace of buying and momentum is missing. Now it has to continue to hold above 30,800 levels to witness an upmove towards 31,250 then 31,500 while on the downside major support is seen at 30,400 levels

INDICES	R1	R2	PIVOTS	S1	S2
NIFTY	11931	11978	11899	11852	11820
BANK NIFTY	31163	31334	31032	30861	30730

## PERFORMANCE UPDATES

Date	Cash/ Futures/ option	Contract	Strategy	Entry Level	Target	Stop Loss	Remark
18-NOV-2019	PARAGMILK	CASH	LONG	138.70	139.70-145	135.90	BOOKED PROF-IT
18-NOV-2019	MCX	CASH	LONG	1170	1176-1182	1158	BOOKED PROF-IT
18-NOV-19	BHARTIARTL	FUTURE	LONG	411.50	413.50-415.50	407.30	BOOKED PROF-IT
18-NOV-2019	CHOLAFIN	FUTURE	LONG	330	332-334	326	BOOKED PROF-IT
18-NOV-2019	BHARTIARTL410CE	OPTION	LONG	15	16-19	12.70	BOOKED PROF-IT

## DISCLAIMER

**www.capitalbuilder.in** does not take any compensation of any kind whatsoever from any company that they mention on this website. All data and reports at **www.capitalbuilder.in** are only information services for investors and are not individualized recommendations to buy or sell securities, nor offers to buy or sell securities. The publishers of reports, reviews and analysis under **www.capitalbuilder.in** are not acting in any way to influence the purchase or sale of securities. The information provided is obtained from sources deemed reliable but is not guaranteed as to accuracy or completeness or as to the results obtained by individuals using such information. It is possible at this or some subsequent date, the publishers of reports, reviews and analysis at **www.capitalbuilder.in** may own, buy or sell securities presented. Each user shall be responsible for the risks of their own investment activities and, in no event, shall **www.capitalbuilder.in**, its publishers, employees, owners or investors, be liable for any losses or damages, monetary or otherwise, that result from actions taken after reading the contents of reports, reviews and analysis published on **www.capitalbuilder.in**. The publishers recommend that anyone trading securities should do so with caution and consult with a broker and financial advisor before.

- Capital Builder Financial Services comply with SEBI INVESTMENT ADVISOR GUIDELINES 2013, So please co-operate in providing KYC & Risk Profiling to our employees.
- Dear clients, Capital Builder Financial Services does not claim/give any assured/ guaranteed return, don't trade on personal calls, trade only in Company Research calls. Please beware of fraud calls/sms & misguided advise rumors like JACKPOT, HOT TIPS, SURESHOT kind of messages.
- Capital Builder Financial Services do not ask any client or any person to deposit money in any Employee Or any person's personal bank account details, so never deposit money in any Employee personal account.