



Capital Builder

We Build Your Capital

- Stock Commodities Advisory
- Real Estate
- Equity / Commodity / Currency Broking
- Auto Loans / LAP
- Mutual Funds

ADDRESS

301-302,SHEKHER CENTRAL ,AB
ROAD,
Indore (M.P.) ,452001.

Email - support@capitalbuilder.in
info@capitalbuilder.in

NIFTY Roundup

The last hour selling pulled the indices off day's high but ended in positive terrain with Nifty finished above 11,800, while Sensex above 40,000 for the first time since July 5.

Nifty bank also touched 30,000 for the first time since September 27.

At close, the Sensex was up 220.03 points at 40,051.87, while Nifty was up 57.20 points at 11,844.10. About 1356 shares have advanced, 1117 shares declined, and 168 shares are unchanged

GAIL, SBI, TCS, Grasim Industries and ITC were among major gainers on the Nifty, while losers were Bharti Infratel, Maruti Suzuki, Yes Bank, Britannia Industries and UPL.

Except auto and metal, all other sectoral indices ended higher led by the PSU bank, IT, FMCG, infra and energy.

World Indices

INDEX	VALUE	% CHANGE
DOW	27034	-0.03%
S&P 500	3036	-0.08%
NASDAQ	8047	-0.63%
EURO STO	3615	-0.19%
FTSE	7310	+0.05%
NIKKEI	22843	-0.57%

TOP GAINER

COMPANY	VALUE	CHANGE
GAIL	133.80	+6.32%
GRASIM	740.10	+3.55%
SBIN	290.40	+3.47%
TCS	2258	+2.88%
ITC	259.20	+2.35%

TOP LOSERS

COMPANY	VALUE	CHANGE
INFRATEL	183	-5.25%
YESBANK	56.05	-3.61%
CIPLA	463.15	-2.09%
MARUTI	7562	-2.06%
BRITANNIA	3289.90	-1.87%

STOCKS 52 WEEK HIGH

COMPANY	VALUE	CHANGE
DMART	1984	+1.69%
GLAXO	1625	+0.06%
DOLAT	83.80	+7.78%
BFTILITIES	260.85	+9.99%

STOCKS 52 WEEK LOW

COMPANY	VALUE	CHANGE
COX&KING	1.80	-2.70%

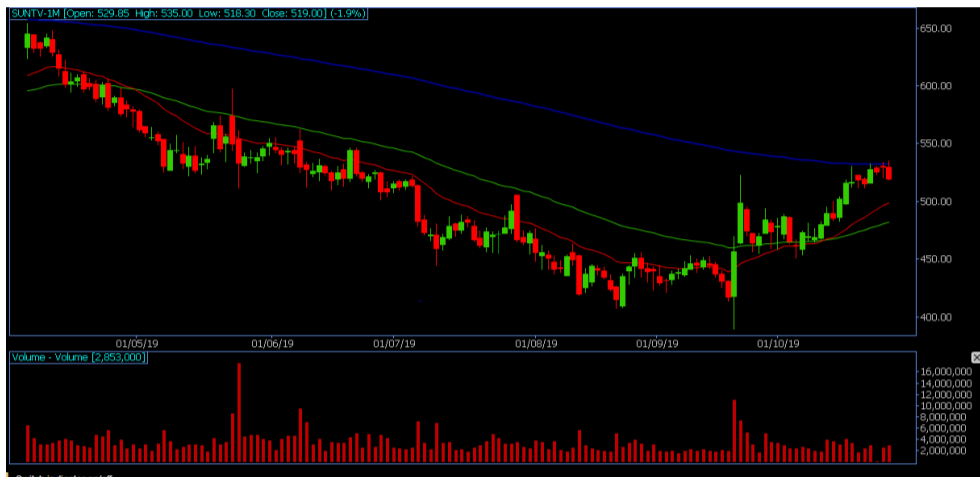
INDIAN INDICES

INDEX	CMP	CHANGE	%CHANGE
SENSEX	40051	+220	+0.55%
NIFTY	11844	+57.25	+0.49%

STOCK RECOMMENDATIONS [FUTURE]

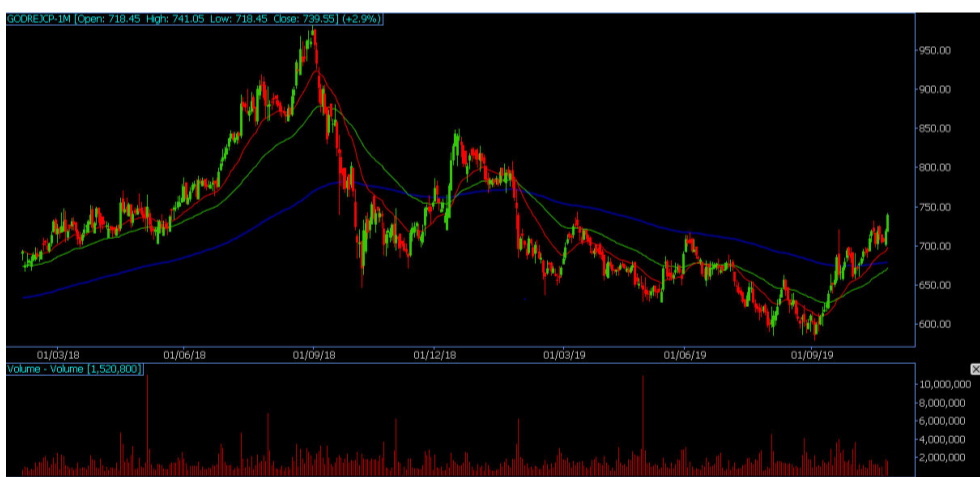
1 SUNTV

SUNTV FUTURES is looking BEARISH on charts, we may see DOWNSIDE movement. We advise SELL BELOW 518 with strict stop loss of 530 for the targets of 510-501.



2 GODREJCP

GODREJCP is looking BULLISH on charts. We advise BUY ABOVE 740 with strict stop loss of 720 for the targets of 750-760.



STOCK RECOMMENDATION [CASH]

1 HDFCLIFE

HDFCLIFE looking on BULLISH charts, we may see UPSIDE movement, We advise BUY above 635 with strict stop loss of 630 for the targets of 642-649.



MACRO NEWS

Shares of Bharti airtel gained 3 percent and Vodafone idea jumped 9 percent intraday on October 30 after the government formed a panel to check financial stress in these telcoms and suggest measures.

Shares of graphite india declined more than 3 percent intraday on October 30 after the company posted a poor set of numbers for the quarter ended September 2019. The net profit fell 83.3 percent at Rs 185 crore against Rs 1,113 crore in the same quarter last year.

Shares of cochin shipyard added more than 2 percent intraday on October 30 after the company won an order worth Rs 175.70 crore.

NIFTY FUTURES



The Nifty50 registered Hanging Man kind of formation suggesting exhaustion of current leg of the upswing. Usually, this kind of formation occurs around short-term tops. Hence in the next trading session, sustaining above 11,784 levels is critical to retain a positive bias. In such a scenario, the market can witness sideways move as some of the momentum oscillators on lower time-frame charts are nearing over-bought zones

BANK NIFTY FUTURES



The index closed 0.38 percent higher at 29,987.50 and formed a Doji candle on the daily scale, as dips were being bought into while selling pressure was seen at higher levels."Now it needs to continue to hold above 29,700 to witness an upmove towards 30,250 then 30,500 levels, while on the downside, supports are seen at 29,750, then 29,500 levels

INDICES	R1	R2	PIVOTS	S1	S2
NIFTY	11890	11937	11837	11791	11738
BANK NIFTY	30174	30362	29963	29776	29565

PERFORMANCE UPDATES

Date	Cash/ Futures/ option	Contract	Strategy	Entry Level	Target	Stop Loss	Remark
30-OCT-2019	CHOLAFIN	CASH	LONG	303	304.80-307	299	BOOKED PROF-IT
30-OCT-2019	CANBK	FUTURE	LONG	198.50	199.30-202	196	BOOKED PROF-IT
30-OCT-2019	HINDUNILVR	FUTURE	LONG	2150	2159-2168	2131	BOOKED PROF-IT
30-OCT-2019	BIOCON	FUTURE	LONG	157.30	157.80-160	155.90	BOOKED PROF-IT
30-OCT-2019	MOTHERSUMI120CE	OPTION	LONG	3.10	3.60-4.20	1.70	BOOKED PROF-IT

DISCLAIMER

www.capitalbuilder.in does not take any compensation of any kind whatsoever from any company that they mention on this website. All data and reports at **www.capitalbuilder.in** are only information services for investors and are not individualized recommendations to buy or sell securities, nor offers to buy or sell securities. The publishers of reports, reviews and analysis under **www.capitalbuilder.in** are not acting in any way to influence the purchase or sale of securities. The information provided is obtained from sources deemed reliable but is not guaranteed as to accuracy or completeness or as to the results obtained by individuals using such information. It is possible at this or some subsequent date, the publishers of reports, reviews and analysis at **www.capitalbuilder.in** may own, buy or sell securities presented. Each user shall be responsible for the risks of their own investment activities and, in no event, shall **www.capitalbuilder.in**, its publishers, employees, owners or investors, be liable for any losses or damages, monetary or otherwise, that result from actions taken after reading the contents of reports, reviews and analysis published on **www.capitalbuilder.in**. The publishers recommend that anyone trading securities should do so with caution and consult with a broker and financial advisor before.

- Capital Builder Financial Services comply with SEBI INVESTMENT ADVISOR GUIDELINES 2013, So please co-operate in providing KYC & Risk Profiling to our employees.
- Dear clients, Capital Builder Financial Services does not claim/give any assured/ guaranteed return, don't trade on personal calls, trade only in Company Research calls. Please beware of fraud calls/sms & misguided advise rumors like JACKPOT, HOT TIPS, SURESHOT kind of messages.
- Capital Builder Financial Services do not ask any client or any person to deposit money in any Employee Or any person's personal bank account details, so never deposit money in any Employee personal account.