

22 MAY 2019



Capital Builder

We Build Your Capital

- Stock Commodities Advisory
- Real Estate
- Equity / Commodity / Currency Broking
- Auto Loans / LAP
- Mutual Funds

ADDRESS

301-302, SHEKHER CENTRAL ,AB
ROAD,
Indore (M.P.) ,452001.

Email - support@capitalbuilder.in
info@capitalbuilder.in

NIFTY Roundup

It is a positive close for the Indian market in a volatile day ahead of counting of Lok Sabha Election 2019.

At close, the Sensex was up 140.41 points at 39110.21, while Nifty was up 28.80 points at 11737.90. About 1356 shares have advanced, 1147 shares declined, and 183 shares are unchanged.

IndusInd Bank, Sun Pharma, Bajaj Auto, BPCL and Eicher Motors were among major gainers on the Nifty, while losers were Tech Mahindra, Indiabulls Housing, Bharti Infratel, ITC and Yes Bank.

Among sectors, except IT and FMCG other sectors ended higher led by bank, auto, infra, energy, pharma and metal.

World Indices

INDEX	VALUE	% CHANGE
DJI	25747	-0.49%
S&P 500	2850	-0.56%
NASDAQ	7785	+1.08%
EURO STO	3395	+0.77%
FTSE	7320	+0.12%
NIKKEI	21272	-0.14%

TOP GAINERS

COMPANY	VALUE	CHANGE
INDUSINBK	1518	+1.91%
SUNPHARMA	421	+3.02%
BPCL	384.25	+2.62%
BAJAJAUTO	3047	+2.28%
COALINDIA	241.25	+1.71%

TOP LOSERS

COMPANY	VALUE	CHANGE
TECHM	750	-2.99%
YESBANK	137.55	-2.45%
ITC	299.75	-2.01%
BHARTINFRATEL	269.35	-2.44%
INDIABULLHSG	784.55	-2.81%

STOCKS 52 WEEK HIGH

COMPANY	VALUE	CHANGE
CUB	210	0.19%
KALPATPOWER	500	0.35%
NEOGEN	291.85	6.93%
DCMSHRIRAM	619	6.59%

STOCKS 52 WEEK LOW

COMPANY	VALUE	CHANGE
COX&KING	92.60	0.11%

INDIAN INDICES

INDEX	CMP	CHANGE	%CHANGE
SENSEX	39110	+140	+0.36%
NIFTY	11737	+29	+0.25%

STOCK RECOMMENDATIONS [FUTURE]

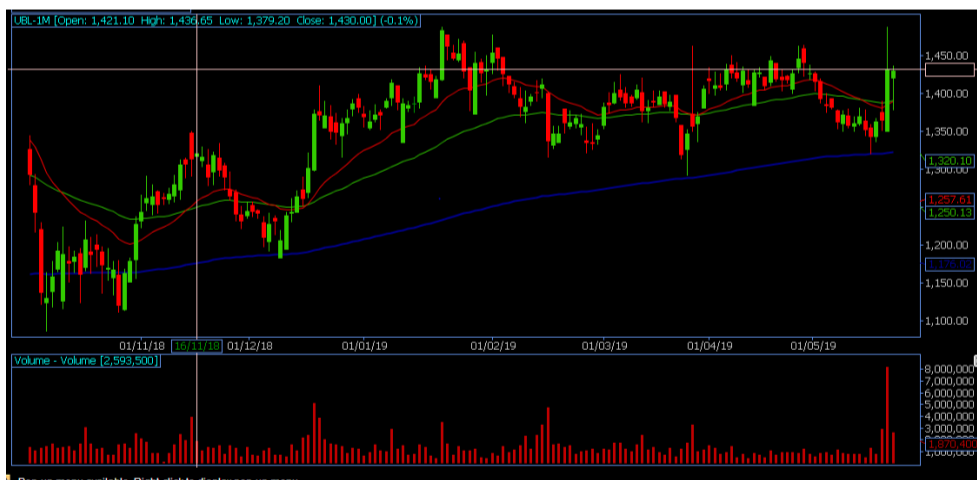
1 DIVISLAB

DIVISLAB FUTURES is looking BULLISH on charts, we may see UPSIDE movement. We advise BUY ABOVE 1705 with strict stop loss of 1690 the targets of 1720-1735 Levels.



2 UBL

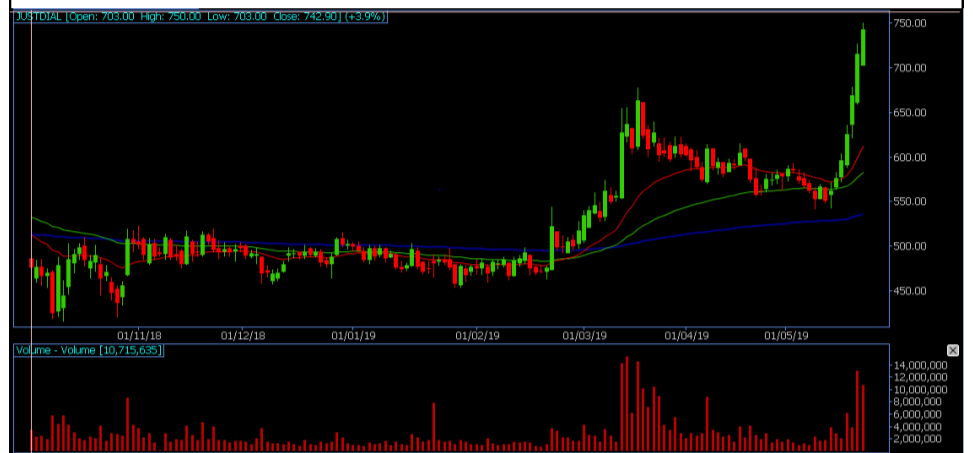
UBL FUTURES is looking BULLISH on charts. We advise BUY ABOVE 1440 with strict stop loss of 1410 for the targets of 1460-1490.



STOCK RECOMMENDATION [CASH]

1 JUSTDIAL

JUSTDIAL looking BULLISH on charts, we may see UPSIDE movement, We advise BUY above 750 with strict stop loss of 740 for the targets of 755-770levels.



MACRO NEWS

Prataap Snacks Q4: Consolidated net profit up 35.9% at Rs 14 crore versus Rs 10 crore, revenue up 14.9% at Rs 1,170.5 crore versus Rs 1,018.4 crore, YoY

A consortium of sorts has been formed that could still revive Jet Airways from the brink of a shutdown. Etihad Airways, along with the Hinduja Group, has joined hands with AdiGro Aviation and Jet Airways founder Naresh Goyal to revive the Indian airline, which suspended operations on April 17.

About a fifth of U.S. companies in China are considering moving some or all of their production out of the country to deal with the trade tensions, and a third are delaying or cancelling investment decisions.

22 MAY 2019

NIFTY FUTURES



Nifty remained highly volatile throughout the session and traded in a wider range of 11,140-11,280. It formed a bullish candle on the daily scale as it managed to regain the losses of the previous session and closed above crucial hurdle of 11,250. The index has to hold above 11,250 to extend its bounce towards 11,333, then 11,420 while on the downside support is seen at 11,188, then 11,11.

BANK NIFTY FUTURES



INDICES	R1	R2	PIVOTS	S1	S2
NIFTY	11787	11837	11735	11685	11632
BANK NIFTY	30711	30897	30490	30305	30083

PERFORMANCE UPDATES

Date	Cash/ Futures/ option	Contract	Strategy	Entry Level	Target	Stop Loss	Remark
22-5-2019	RAYMOND	CASH	SHORT	801	795-785	811	BOOKED PROF-IT
22-5-2019	SBIN	CAH	LONG	336	337.80-343	332	BOOKED PROF-IT
22-5-2019	AXISBANK	FUTURE	SHORT	783	787-795	775	BOOKED PROF-IT
22-5-2019	JUSTDIALCE720	OPTION	LONG	40	45-49	35	BOOKED PROF-IT
22-5-2019	BANKNIFTY	INDEX	LONG	30600	30650-30750	30500	BOOKED PROF-IT

DISCLAIMER

www.capitalbuilder.in does not take any compensation of any kind whatsoever from any company that they mention on this website. All data and reports at **www.capitalbuilder.in** are only information services for investors and are not individualized recommendations to buy or sell securities, nor offers to buy or sell securities. The publishers of reports, reviews and analysis under **www.capitalbuilder.in** are not acting in any way to influence the purchase or sale of securities. The information provided is obtained from sources deemed reliable but is not guaranteed as to accuracy or completeness or as to the results obtained by individuals using such information. It is possible at this or some subsequent date, the publishers of reports, reviews and analysis at **www.capitalbuilder.in** may own, buy or sell securities presented. Each user shall be responsible for the risks of their own investment activities and, in no event, shall **www.capitalbuilder.in**, its publishers, employees, owners or investors, be liable for any losses or damages, monetary or otherwise, that result from actions taken after reading the contents of reports, reviews and analysis published on **www.capitalbuilder.in**. The publishers recommend that anyone trading securities should do so with caution and consult with a broker and financial advisor before.

- Capital Builder Financial Services comply with SEBI INVESTMENT ADVISOR GUIDELINES 2013, So please co-operate in providing KYC & Risk Profiling to our employees.
- Dear clients, Capital Builder Financial Services does not claim/give any assured/ guaranteed return, don't trade on personal calls, trade only in Company Research calls. Please beware of fraud calls/sms & misguided advise rumors like JACKPOT, HOT TIPS, SURESHOT kind of messages.
- Capital Builder Financial Services do not ask any client or any person to deposit money in any Employee Or any person's personal bank account details, so never deposit money in any Employee personal account.