



Capital Builder

We Build Your Capital

- Stock Commodities Advisory
- Real Estate
- Equity / Commodity / Currency Broking
- Auto Loans / LAP
- Mutual Funds

ADDRESS

301-302,SHEKHER CENTRAL ,AB
ROAD,
Indore (M.P.) ,452001.

Email - support@capitalbuilder.in
info@capitalbuilder.in

NIFTY Roundup

Sensex ended down 334.54 points or 0.85 percent at 38963.84, and the Nifty closed 73.50 points lower or 0.63 percent at 11588.40. Some 1,260 shares have advanced, 1,293 shares declined, and 206 shares are unchanged. ICICI Bank was the top gainer, up 3 percent while Infosys tanked 16 percent.

World Indices

INDEX	VALUE	% CHANGE
DOW	26772	-0.09%
S&P 500	3006	+0.69%
NASDAQ	7250	+0.50%
EURO STO	3572	+0.46%
FTSE	7193	+0.42%
NIKKEI	22550	+0.25%

TOP GAINER

COMPANY	VALUE	CHANGE
DRREDDY	2819	+3.49%
ICICIBANK	451.75	+3.19%
BPCL	532.70	+2.38%
TITAN	1331	+2.34%
CIPLA	453.65	+2.14%

TOP LOSERS

COMPANY	VALUE	CHANGE
INFY	640	-16.65%
TATAMOTOR	131	-4.02%
BAJAJFINSV	8005	-3.16%
BHARTARTL	372.65	-2.83%
HCLTECH	1064.90	-2.79%

STOCKS 52 WEEK HIGH

COMPANY	VALUE	CHANGE
ADANITRANS	259	+6.36%
GRSE	191.45	+4.85%
DABUR	480	+0.96%
FINPIPE	626	+0.48%

STOCKS 52 WEEK LOW

COMPANY	VALUE	CHANGE
8KMILES	35.90	4.90%

INDIAN INDICES

INDEX	CMP	CHANGE	%CHANGE
SENSEX	38963	-334.50	-0.85%
NIFTY	11588	-73.50	-0.63%

STOCK RECOMMENDATIONS [FUTURE]

1 JUBLEFOOD

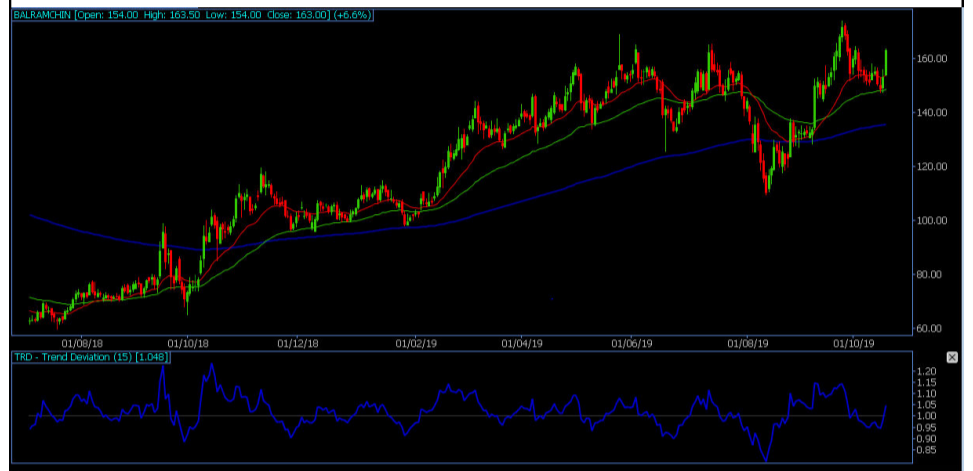
JUBLEFOOD FUTURES is looking BULLISH on charts, we may see UPSIDE movement. We advise BUY ABOVE 1450 with strict stop loss of 1435 for the targets of 1465-1480.



STOCK RECOMMENDATION [CASH]

1 BALRAMCCHIN

BALRAMCHIN looking on BULLISH charts, we may see UPSIDE movement, We advise BUY above 160 with strict stop loss of 158 for the targets of 165-170.



2 RBLBANK

RBLBANK is looking BEARISH on charts. We advise SELL BELOW 280 with strict stop loss of 290 for the targets of 270-260



MACRO NEWS

JUBILANT FOODWORK : Jubilant FoodWorks, which operates Domino's Pizza and Dunkin' Donuts chain in India, reported a 2.8 percent year-on-year decline in September quarter consolidated profit at Rs 73.4 crore due to one-time loss of Rs 12.5 crore. Consolidated revenue grew 12.2 percent YoY to Rs 998 crore.

Infosys starts probe into CEO's 'unethical practices'
Infosys Ltd said on Tuesday it was investigating allegations of "unethical practices" by chief executive officer Salil Parekh after receiving whistleblower complaints last month, sending its shares into a tailspin.

Shares of Oberoi Realty fell more than 6 percent intraday on October 22 after the profit during July-September period declined sharply compared to year-ago.

NIFTY FUTURES



Nifty index is continuously forming higher highs-higher lows from past six trading sessions and supports are gradually shifting higher. Now it has to continue to hold above 11,550 levels to witness momentum towards 11,700 then 11,800 while on down-side major support is seen at 11,500 zones

BANK NIFTY FUTURES



Bank Nifty closed higher outperforming the benchmark indices. Index has strong support zone near the previous breakout zone of 28,850 zone and the test of support zone should be utilized to build long positions. Trend continues to remain on the upside. Overall Bank Nifty is likely to retest recent swing high of 30,800 zone. Support is at 29,000-28,850 and resistance is at 29,800-30,200.

INDICES	R1	R2	PIVOTS	S1	S2
NIFTY	11677	11766	11625	11536	11484
BANK NIFTY	29657	29902	29444	29198	28985

PERFORMANCE UPDATES

Date	Cash/ Futures/ option	Contract	Strategy	Entry Level	Target	Stop Loss	Remark
22-OCT-2019	SBILIFE	CASH	LONG	455	457-463	449	BOOKED PROF-IT
22-OCT-2019	DLF	FUTURE	LONG	173.20	174.20-178	171.20	BOOKED PROF-IT
22-OCT-2019	WOCKPHARMA	CASH	LONG	275	276.50-278	272	BOOKED PROF-IT
22-OCT-2019	MANNAPURAM	FUTURE	LONG	157.30	157.80-160	155.90	BOOKED PROF-IT
22-OCT-2019	MARUTI7300CE	OPTION	LONG	215	225-240	190	BOOKED PROF-IT

DISCLAIMER

www.capitalbuilder.in does not take any compensation of any kind whatsoever from any company that they mention on this website. All data and reports at **www.capitalbuilder.in** are only information services for investors and are not individualized recommendations to buy or sell securities, nor offers to buy or sell securities. The publishers of reports, reviews and analysis under **www.capitalbuilder.in** are not acting in any way to influence the purchase or sale of securities. The information provided is obtained from sources deemed reliable but is not guaranteed as to accuracy or completeness or as to the results obtained by individuals using such information. It is possible at this or some subsequent date, the publishers of reports, reviews and analysis at **www.capitalbuilder.in** may own, buy or sell securities presented. Each user shall be responsible for the risks of their own investment activities and, in no event, shall **www.capitalbuilder.in**, its publishers, employees, owners or investors, be liable for any losses or damages, monetary or otherwise, that result from actions taken after reading the contents of reports, reviews and analysis published on **www.capitalbuilder.in**. The publishers recommend that anyone trading securities should do so with caution and consult with a broker and financial advisor before.

- Capital Builder Financial Services comply with SEBI INVESTMENT ADVISOR GUIDELINES 2013, So please co-operate in providing KYC & Risk Profiling to our employees.
- Dear clients, Capital Builder Financial Services does not claim/give any assured/ guaranteed return, don't trade on personal calls, trade only in Company Research calls. Please beware of fraud calls/sms & misguided advise rumors like JACKPOT, HOT TIPS, SURESHOT kind of messages.
- Capital Builder Financial Services do not ask any client or any person to deposit money in any Employee Or any person's personal bank account details, so never deposit money in any Employee personal account.